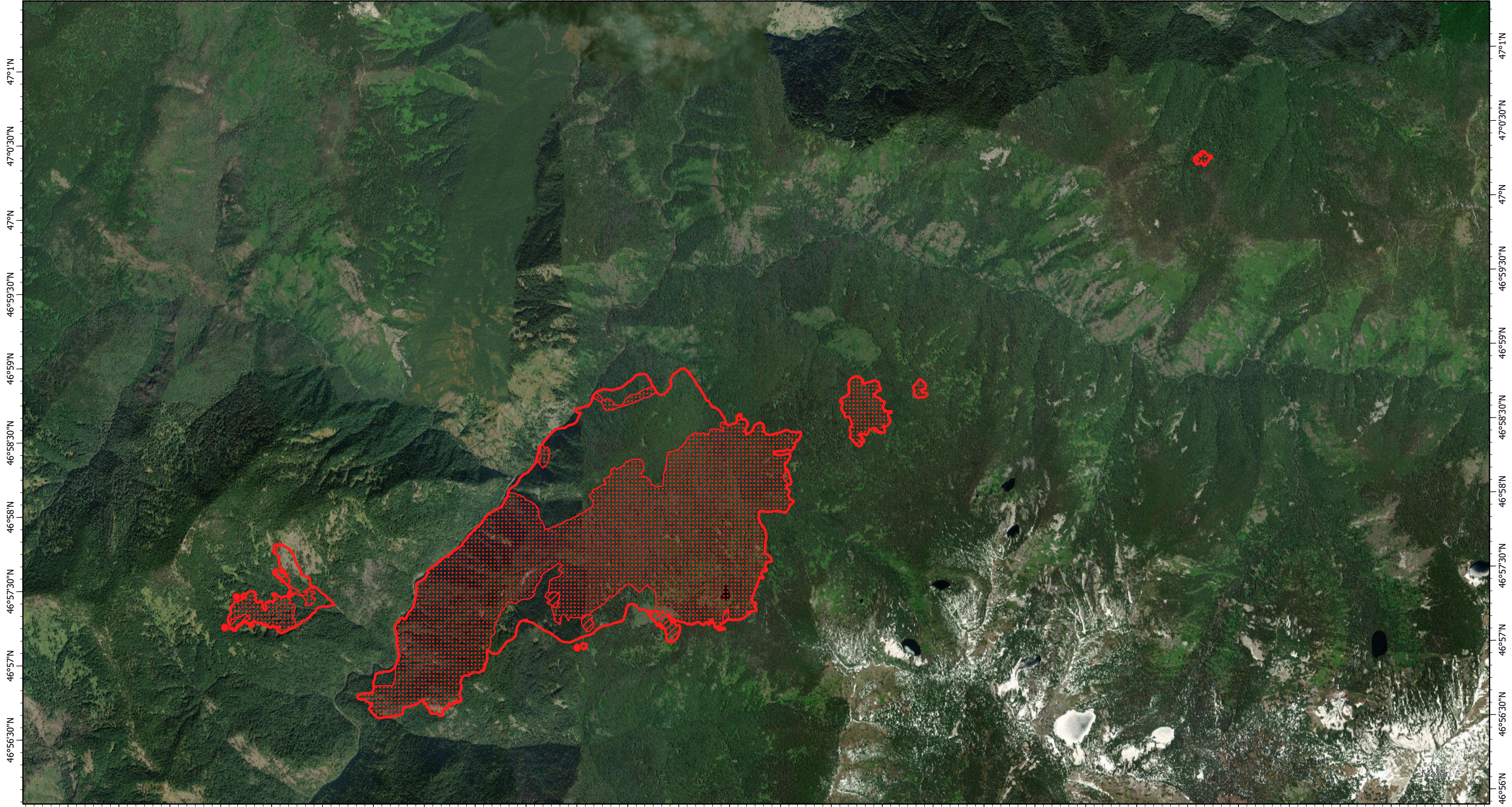


115°45'W 115°44'30"W 115°44'W 115°43'30"W 115°43'W 115°42'30"W 115°42'W 115°41'30"W 115°41'W 115°40'30"W 115°40'W 115°39'30"W 115°39'W 115°38'30"W 115°38'W 115°37'30"W 115°37'W 115°36'30"W 115°36'W 115°35'30"W 115°35'W 115°34'30"W 115°34'W 115°33'30"W 115°33'W 115°32'30"W 115°32'W 115°31'30"W 115°31'W



47°1'N  
47°0'30"N  
47°N  
46°59'30"N  
46°59'N  
46°58'30"N  
46°58'N  
46°57'30"N  
46°57'N  
46°56'30"N  
46°56'N

47°1'N  
47°0'30"N  
47°N  
46°59'30"N  
46°59'N  
46°58'30"N  
46°58'N  
46°57'30"N  
46°57'N  
46°56'30"N  
46°56'N

115°45'W 115°44'30"W 115°44'W 115°43'30"W 115°43'W 115°42'30"W 115°42'W 115°41'30"W 115°41'W 115°40'30"W 115°40'W 115°39'30"W 115°39'W 115°38'30"W 115°38'W 115°37'30"W 115°37'W 115°36'30"W 115°36'W 115°35'30"W 115°35'W 115°34'30"W 115°34'W 115°33'30"W 115°33'W 115°32'30"W 115°32'W 115°31'30"W 115°31'W

**Larkins Complex Fire IR Map**  
**ID-IPF-000505**  
30 July 2021, 2130 PDT  
3,026 Interpreted Acres

Scale: 1:45,000  
Projection: North American 1983  
Produced by: Owyhee Air Research, LLC  
IR Interpreter: K. Hanks  
Contact: fire@owyheear.com (208) 442-5405

**Legend**  
● IsolatedHeat  
▭ BurnPerimeter  
▨ IntenseHeat  
▤ ScatteredHeat

