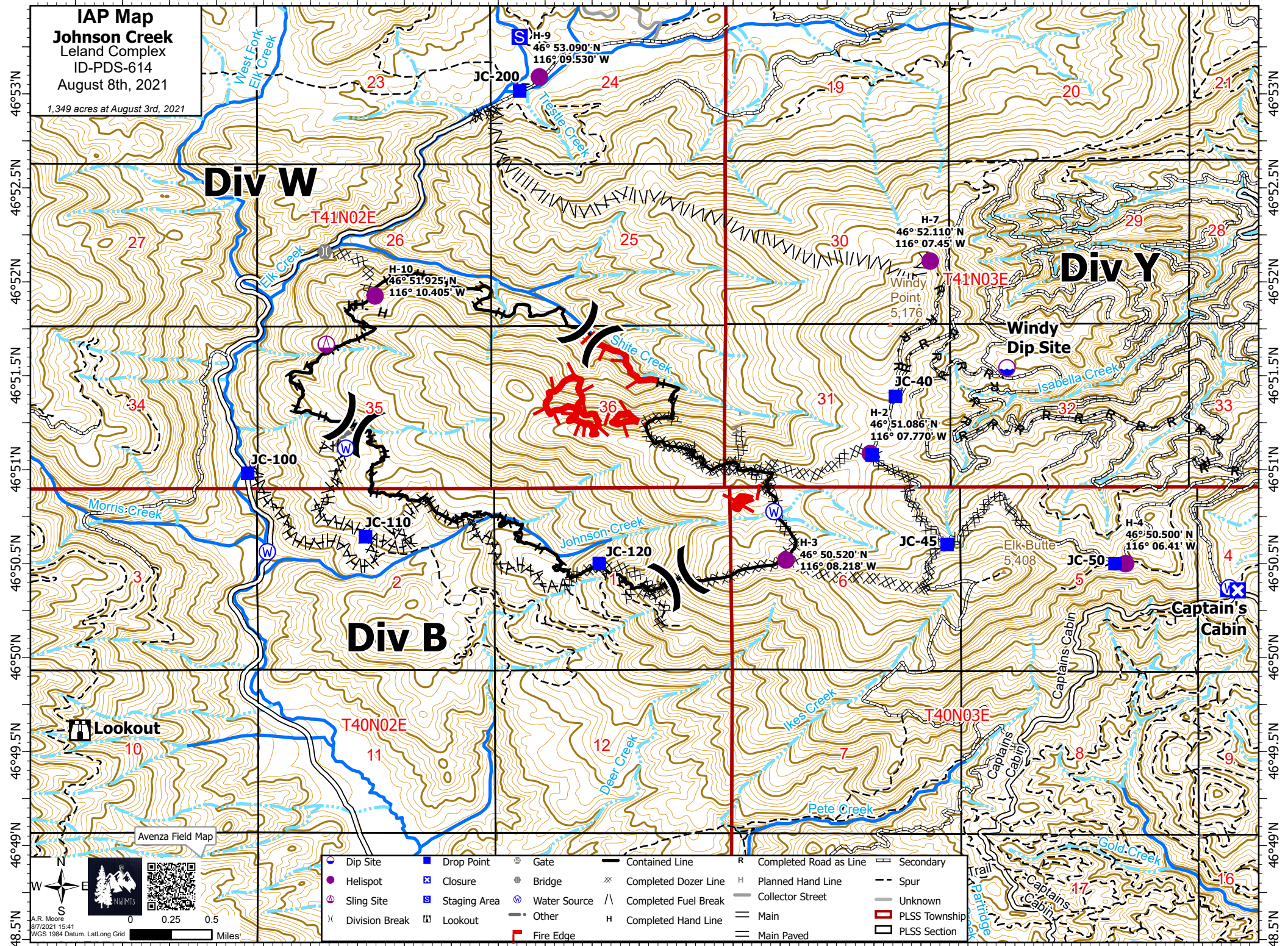


116°12'W 116°11.5'W 116°11'W 116°10.5'W 116°10'W 116°9.5'W 116°9'W 116°8.5'W 116°8'W 116°7.5'W 116°7'W 116°6.5'W 116°6.01'W

IAP Map
Johnson Creek
 Leland Complex
 ID-PDS-614
 August 8th, 2021
 1,349 acres at August 3rd, 2021



Div W **Div Y**

Div B

Lookout

Avenza Field Map

0 0.25 0.5 Miles

A.R. Moore
 8/7/2021 15:41
 WGS 1984 Datum, LatLong Grid

Dip Site	Drop Point	Gate	Contained Line	Completed Road as Line	Secondary
Helispot	Closure	Bridge	Completed Dozer Line	Planned Hand Line	Spur
Sling Site	Staging Area	Water Source	Completed Fuel Break	Collector Street	Unknown
Division Break	Lookout	Other	Completed Hand Line	Main	PLSS Township
	Fire Edge			Main Paved	PLSS Section

116°12'W 116°11.5'W 116°11'W 116°10.5'W 116°10'W 116°9.5'W 116°9'W 116°8.5'W 116°8'W 116°7.5'W 116°7'W 116°6.5'W 116°6.01'W

46°53'N
46°52.5'N
46°52'N
46°51.5'N
46°51'N
46°50.5'N
46°50'N
46°49.5'N
46°49'N
46°48.5'N

46°53'N
46°52.5'N
46°52'N
46°51.5'N
46°51'N
46°50.5'N
46°50'N
46°49.5'N
46°49'N
46°48.5'N