

Suppression Repair Johnson Creek

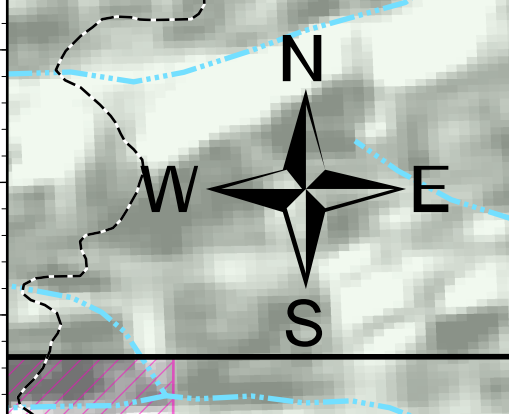
Leland Complex
ID-PDS-614
August 8th, 2021
1,349 acres at August 3rd, 2021

Repair Status	Event Point - Repair Status	Dip Site
Repair Needed	No Repair Needed	Helipad
No Repair Needed	Unknown	Slip Site
Accountable Property - Repair Status	Unknown	Division Break
Unknown	Event Line - Repair Status	Drop Point
Repair Needed	Repair Needed	Closure
Unknown	Unknown	Staging Area
Wildfire Daily Fire Perimeter	Lockout	Other
Completed Dozer Line	Completed Dozer Line	Water Development or Draft Site
Completed Fuel Break	Completed Fuel Break	Stream Crossing
Completed Hand Line	Completed Hand Line	Dozer Push
Planned Burnout	Planned Burnout	Internet Access
Planned Dozer Line	Planned Dozer Line	Repeater
Planned Hand Line	Planned Hand Line	Safety Zone
Planned Road as Line	Planned Road as Line	Water Source
Planned Secondary Line	Planned Secondary Line	Photo Points
Other	Other	US Forest Service
Escape Route	Escape Route	State
Retardant Drop	Retardant Drop	Private
Fire Edge	Fire Edge	Private Industrial
Contained Line	Contained Line	Mountain Peak

Div W

Div Y

Div B



A.R. Moore
8/7/2021 1516
WGS 1984 Datum: Lat,Long Grid

0 0.25 0.5 Miles

