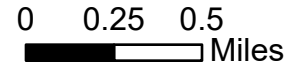


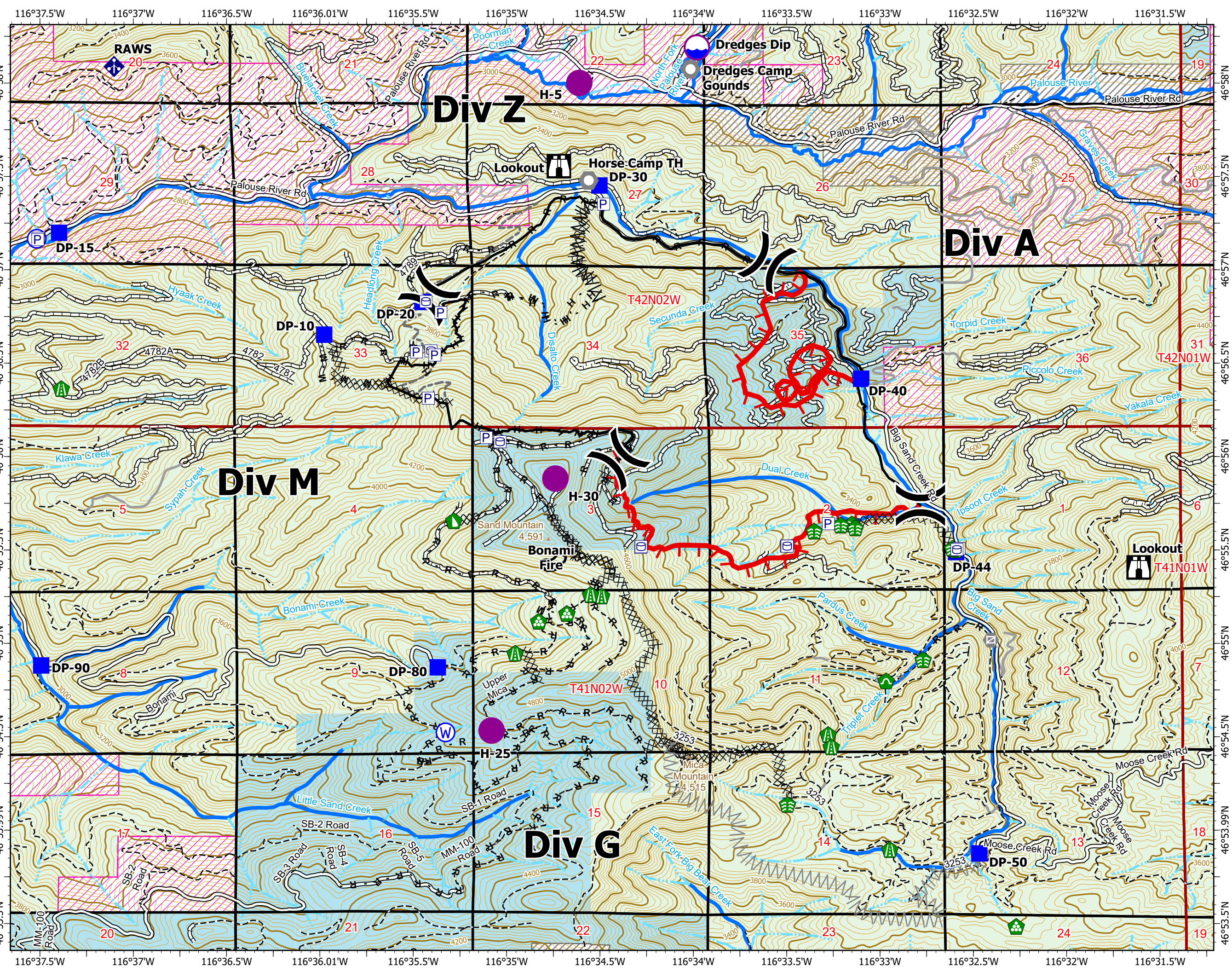
Ops Map

Sand Mountain
Leland Complex
ID-PDS-614
July 30th, 2021

1,601 acres at July 29th, 2021 08:30



- | | | | |
|--|---------------------|--|-----------------------------------|
| | Dip Site | | Completed Dozer Line |
| | Hellsport | | Completed Fuel Break |
| | Division Break | | Completed Hand Line |
| | Drop Point | | Completed Mixed Construction Line |
| | Lookout | | Completed Road as Line |
| | Landmark | | Planned Fuel Break |
| | Gate | | Planned Road as Line |
| | Stream Crossing | | Collector Street |
| | Road Repair | | Main |
| | Landing or Log Deck | | Main Paved |
| | Dozer Push | | Secondary |
| | Culvert | | Spur |
| | Mobile Weather Unit | | Unknown |
| | Water Source | | US Forest Service |
| | Pump | | State |
| | Water Tank | | Private |
| | ATV Trail | | Private Industrial |
| | Fire Edge | | PLSS Township |
| | Contained Line | | PLSS Section |



A.R. Moore
7/29/2021 17:52
WGS 1984 Datum, LatLong Grid

