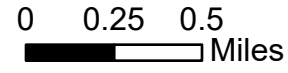


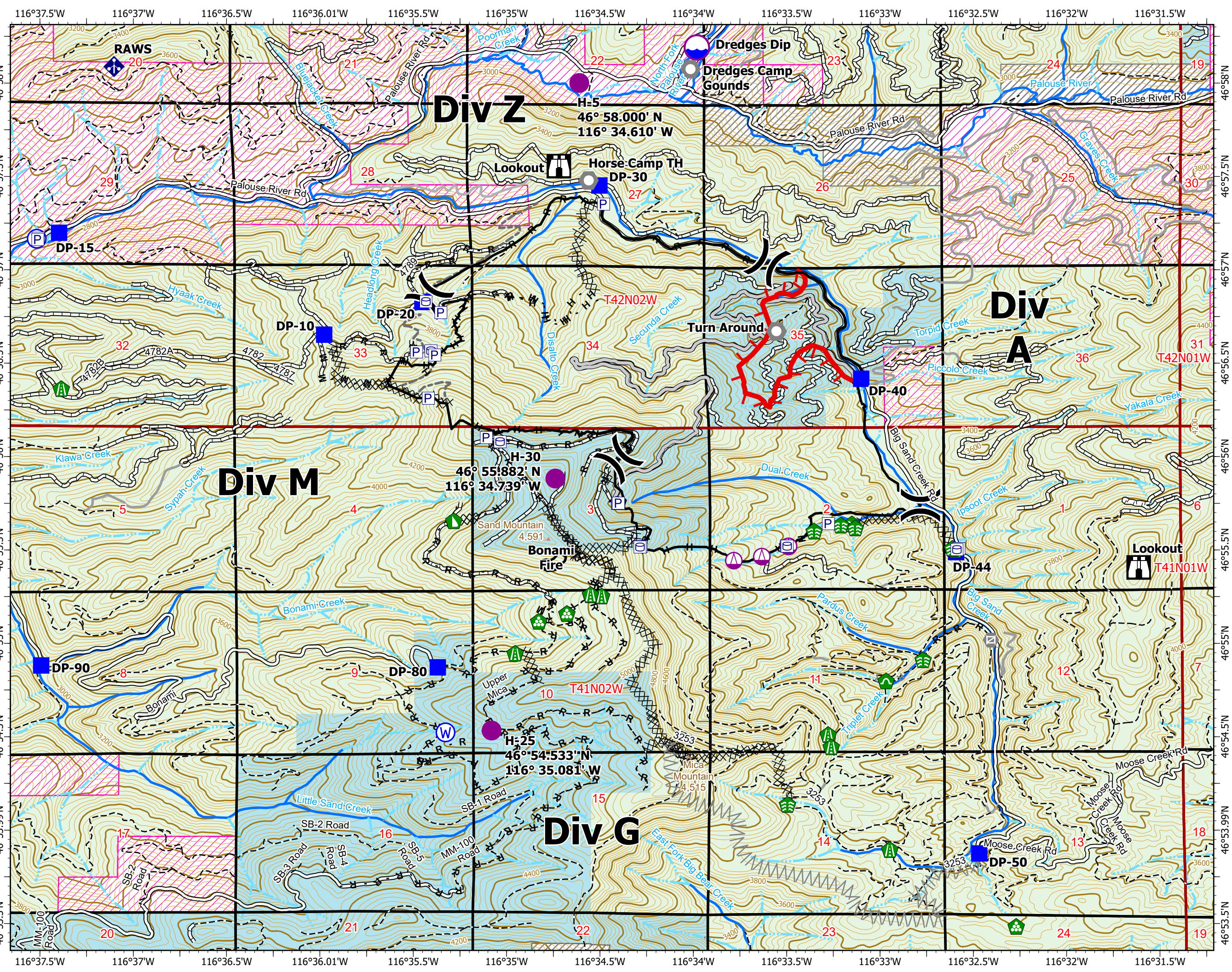
Ops Map

Sand Mountain
Leland Complex
ID-PDS-614
August 4th, 2021

1,617 acres at August 1st, 2021



- | | | | |
|--|---------------------|--|-----------------------------------|
| | Dip Site | | Access or Improved Road |
| | Hellsport | | ATV Trail |
| | Sling Site | | Fire Edge |
| | Division Break | | Contained Line |
| | Drop Point | | Completed Dozer Line |
| | Lookout | | Completed Hand Line |
| | Landmark | | Completed Mixed Construction Line |
| | Gate | | Completed Road as Line |
| | Stream Crossing | | Planned Fuel Break |
| | Road Repair | | Planned Road as Line |
| | Landing or Log Deck | | Collector Street |
| | Dozer Push | | Main |
| | Culvert | | Main Paved |
| | Mobile Weather Unit | | Secondary |
| | Water Source | | Spur |
| | Pump | | Unknown |
| | Water Tank | | US Forest Service |
| | | | State |
| | | | Private |
| | | | Private Industrial |
| | | | PLSS Township |
| | | | PLSS Section |



A.R. Moore
8/3/2021 16:54
WGS 1984 Datum, LatLong Grid

