

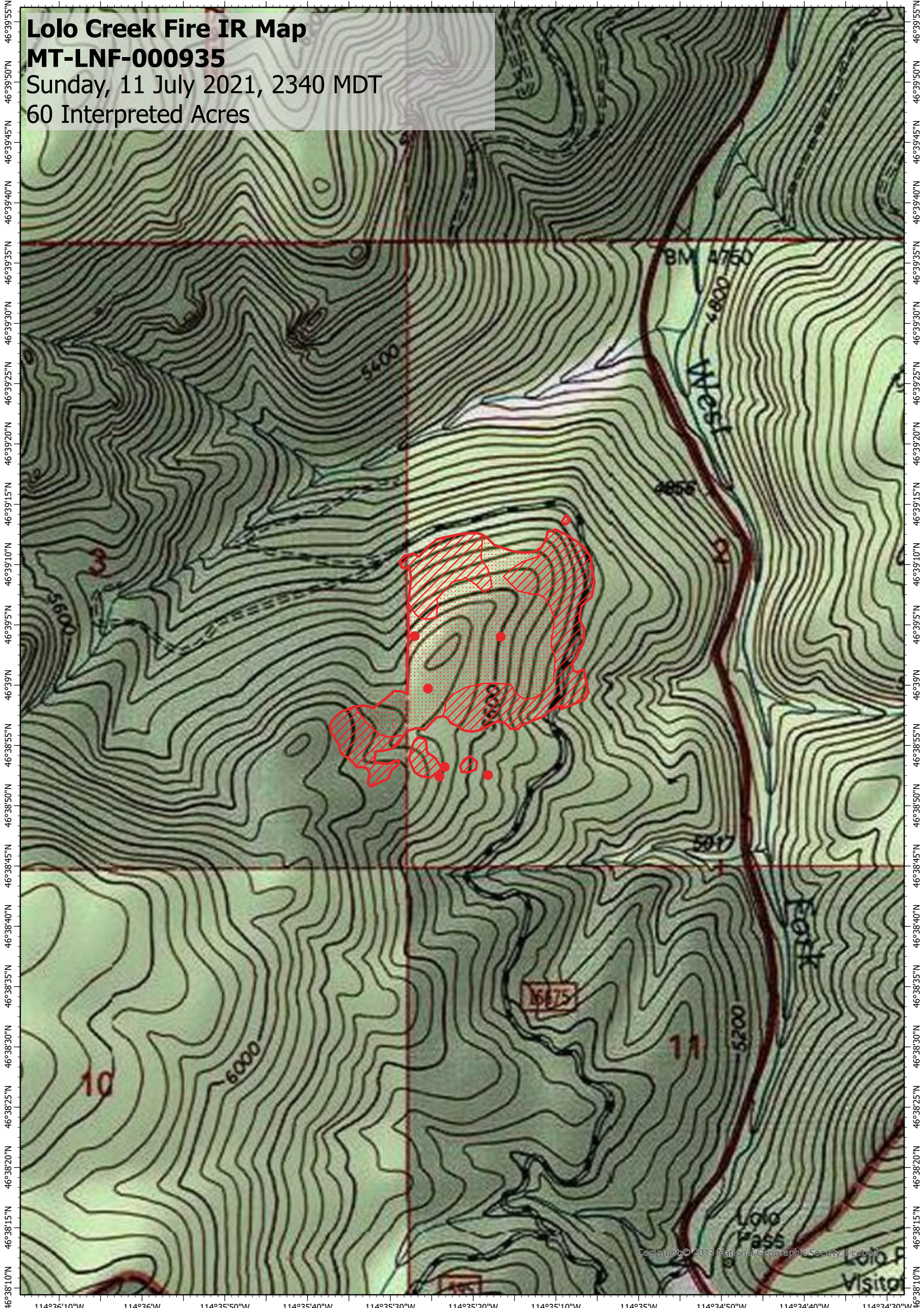
114°36'10"W 114°36'W 114°35'50"W 114°35'40"W 114°35'30"W 114°35'20"W 114°35'10"W 114°35'W 114°34'50"W 114°34'40"W 114°34'30"W

Lolo Creek Fire IR Map

MT-LNF-000935

Sunday, 11 July 2021, 2340 MDT

60 Interpreted Acres



Legend

- IR Isolated Heat
- Burn Perimeter
- IR Intense Heat
- IR Scattered Heat

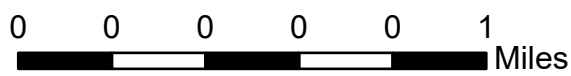
Scale: 1:13,000

Projection: WGS 1984

Produced by: Owyhee Air Research, LLC

IR Interpreter: D. Merriman

Contact: fire@owyheear.com (208) 442-5405



Copyright © 2013 National Geographic Society, i-cubed