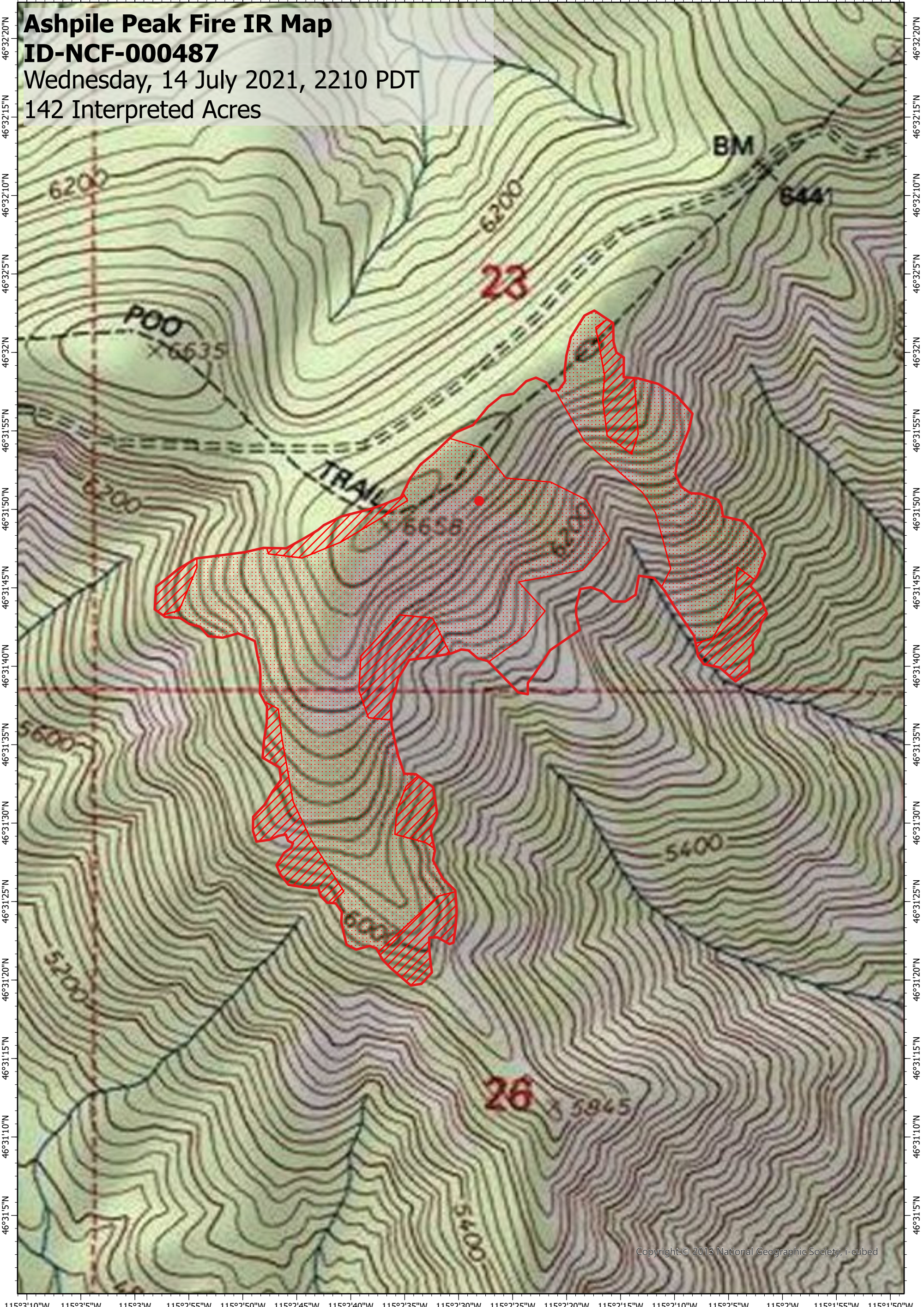


115°3'10"W 115°3'5"W 115°3"W 115°2'55"W 115°2'50"W 115°2'45"W 115°2'40"W 115°2'35"W 115°2'30"W 115°2'25"W 115°2'20"W 115°2'15"W 115°2'10"W 115°2'5"W 115°2"W 115°1'55"W 115°1'50"W



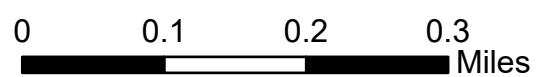
**Ashpile Peak Fire IR Map**  
**ID-NCF-000487**  
 Wednesday, 14 July 2021, 2210 PDT  
 142 Interpreted Acres

115°3'10"W 115°3'5"W 115°3"W 115°2'55"W 115°2'50"W 115°2'45"W 115°2'40"W 115°2'35"W 115°2'30"W 115°2'25"W 115°2'20"W 115°2'15"W 115°2'10"W 115°2'5"W 115°2"W 115°1'55"W 115°1'50"W

**Legend**

- Isolated Heat
- Burn Perimeter
- Intense Heat
- Scattered Heat

Scale: 1:10,000  
 Projection: WGS 1984  
 Produced by: Owyhee Air Research, LLC  
 IR Interpreter: C. Holley  
 Contact: fire@owyheear.com (208) 442-5405



Copyright © 2013 National Geographic Society, i-cubed