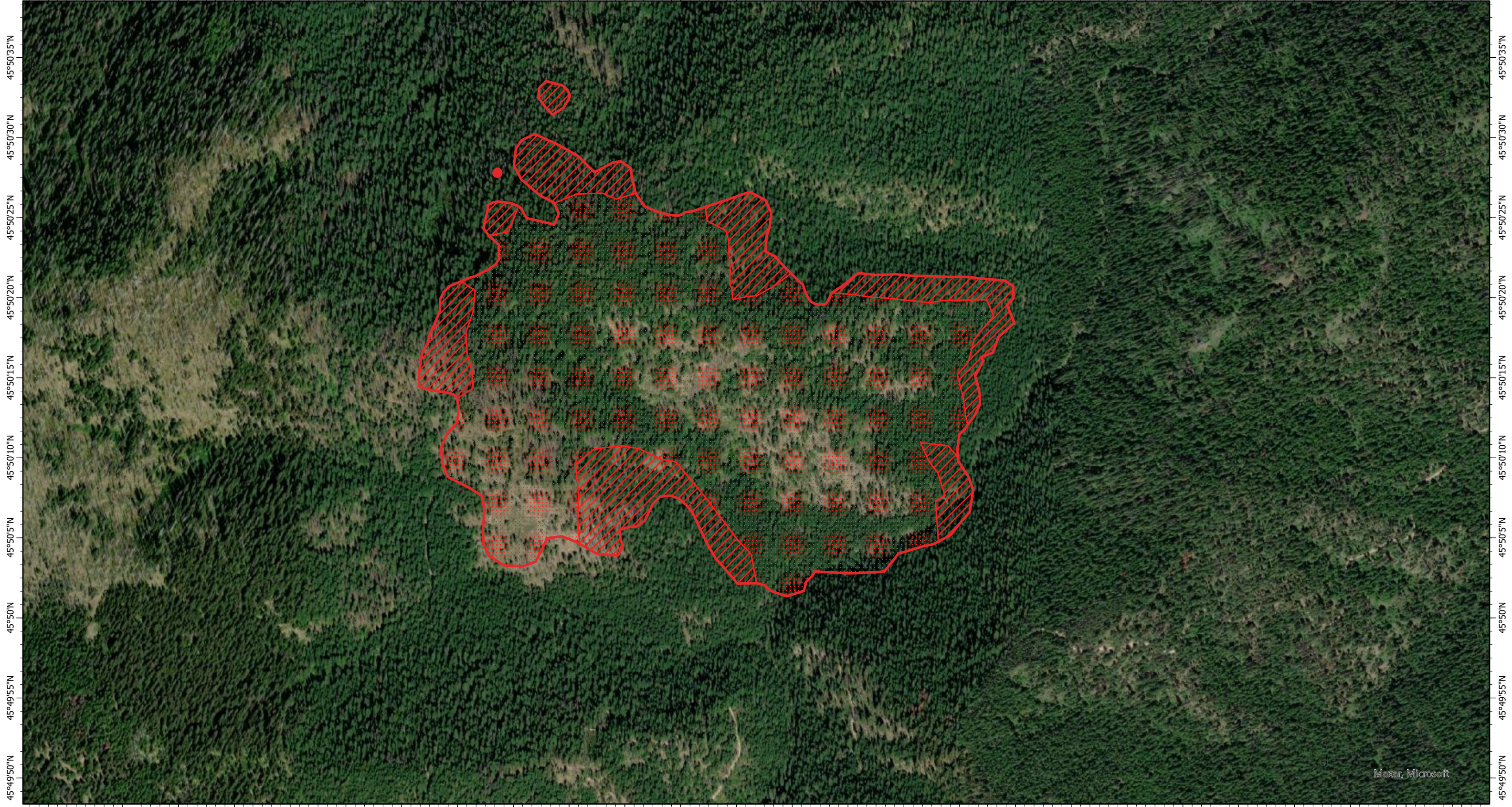


114°58'35"W 114°58'30"W 114°58'25"W 114°58'20"W 114°58'15"W 114°58'10"W 114°58'5"W 114°58'W 114°57'55"W 114°57'50"W 114°57'45"W 114°57'40"W 114°57'35"W 114°57'30"W 114°57'25"W 114°57'20"W 114°57'15"W 114°57'10"W 114°57'5"W 114°57'W 114°56'55"W 114°56'50"W 114°56'45"W 114°56'40"W 114°56'35"W 114°56'30"W



Maxar, Microsoft

114°58'35"W 114°58'30"W 114°58'25"W 114°58'20"W 114°58'15"W 114°58'10"W 114°58'5"W 114°58'W 114°57'55"W 114°57'50"W 114°57'45"W 114°57'40"W 114°57'35"W 114°57'30"W 114°57'25"W 114°57'20"W 114°57'15"W 114°57'10"W 114°57'5"W 114°57'W 114°56'55"W 114°56'50"W 114°56'45"W 114°56'40"W 114°56'35"W 114°56'30"W

Lynx Fire IR Map
ID-NCF-000676

Wednesday, 21 July 2021, 0230 PDT
158 Interpreted Acres

Legend

- IR Isolated Heat
- ▨ IR Intense Heat
- ▭ Burn Perimeter
- ▤ IR Scattered Heat

Scale: 1:10,000
Projection: WGS 1984
Produced by: Owyhee Air Research, LLC
IR Interpreter: C. Merriman
Contact: fire@owyheear.com (208) 442-5405

