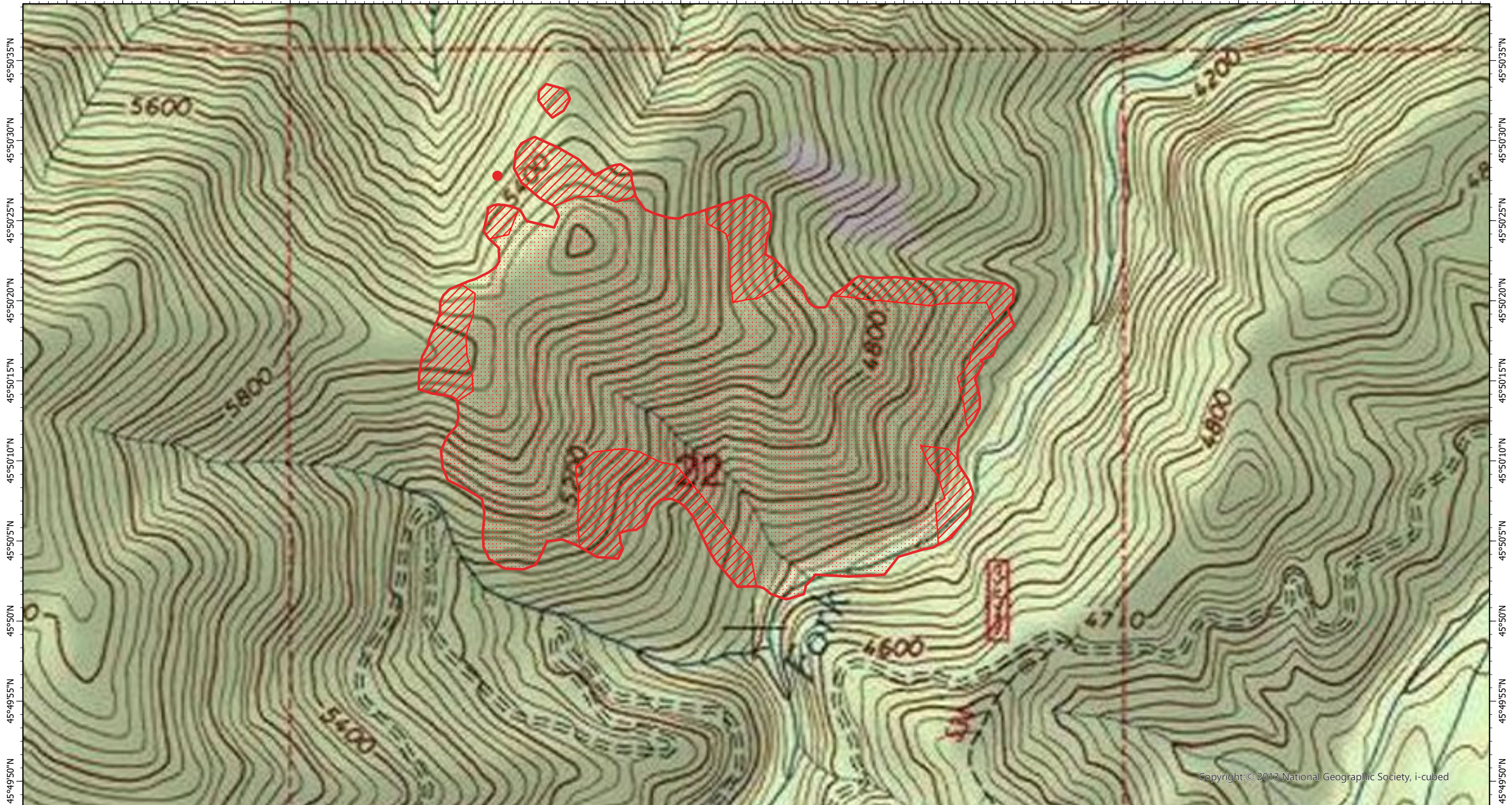


114°58'35"W 114°58'30"W 114°58'25"W 114°58'20"W 114°58'15"W 114°58'10"W 114°58'5"W 114°58'W 114°57'55"W 114°57'50"W 114°57'45"W 114°57'40"W 114°57'35"W 114°57'30"W 114°57'25"W 114°57'20"W 114°57'15"W 114°57'10"W 114°57'5"W 114°57'W 114°56'55"W 114°56'50"W 114°56'45"W 114°56'40"W 114°56'35"W 114°56'30"W



**Lynx Fire IR Map**  
**ID-NCF-000676**

Wednesday, 21 July 2021, 0230 PDT  
158 Interpreted Acres

**Legend**

- IR Isolated Heat
- Burn Perimeter
- IR Intense Heat
- IR Scattered Heat

Scale: 1:10,000  
Projection: WGS 1984  
Produced by: Owyhee Air Research, LLC  
IR Interpreter: C. Merriman  
Contact: fire@owyheear.com (208) 442-5405

