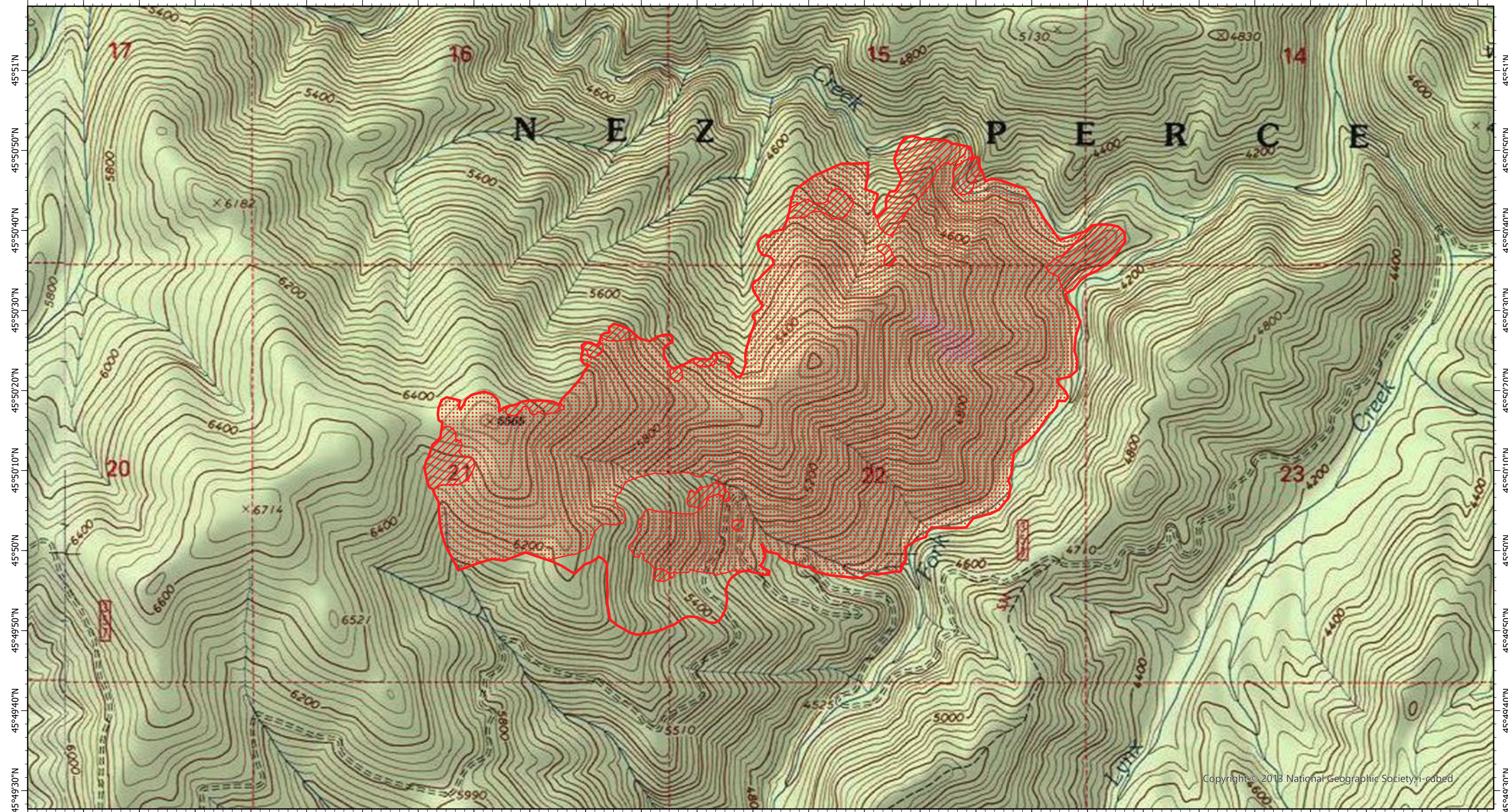





115°0'10"W 115°W 114°59'50"W 114°59'40"W 114°59'30"W 114°59'20"W 114°59'10"W 114°59'W 114°58'50"W 114°58'40"W 114°58'30"W 114°58'20"W 114°58'10"W 114°58'W 114°57'50"W 114°57'40"W 114°57'30"W 114°57'20"W 114°57'10"W 114°57'W 114°56'50"W 114°56'40"W 114°56'30"W 114°56'20"W 114°56'10"W 114°56'W 114°55'50"W



Copyright © 2013 National Geographic Society, i-cubed

115°0'10"W 115°W 114°59'50"W 114°59'40"W 114°59'30"W 114°59'20"W 114°59'10"W 114°59'W 114°58'50"W 114°58'40"W 114°58'30"W 114°58'20"W 114°58'10"W 114°58'W 114°57'50"W 114°57'40"W 114°57'30"W 114°57'20"W 114°57'10"W 114°57'W 114°56'50"W 114°56'40"W 114°56'30"W 114°56'20"W 114°56'10"W 114°56'W 114°55'50"W

**Lynx Fire IR Map**  
**ID-NCF-000676**  
27 July 2021, 2129 PDT  
662 Interpreted acres

- Legend**
-  Burn Perimeter
  -  Intense Heat
  -  Scattered Heat

Scale: 1:20,000  
Projection: WGS 1984  
Produced by: Owyhee Air Research, LLC  
IR Interpreter: K. Hanks  
Contact: fire@owyheeair.com (208) 442-5405

