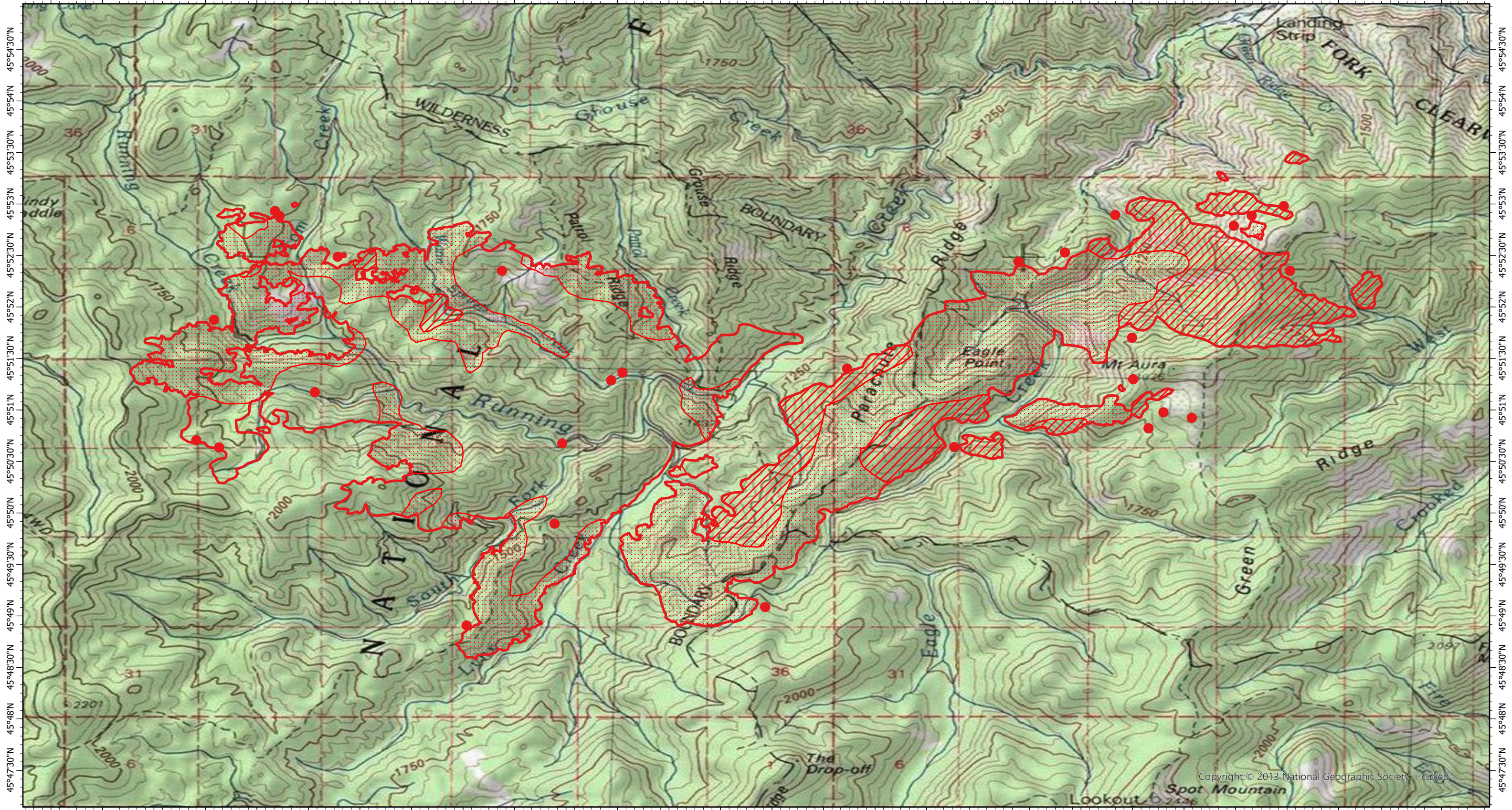


115°2'W 115°1'30"W 115°1'W 115°0'30"W 115°W 114°59'30"W 114°59'W 114°58'30"W 114°58'W 114°57'30"W 114°57'W 114°56'30"W 114°56'W 114°55'30"W 114°55'W 114°54'30"W 114°54'W 114°53'30"W 114°53'W 114°52'30"W 114°52'W 114°51'30"W 114°51'W 114°50'30"W 114°50'W 114°49'30"W 114°49'W 114°48'30"W



Lynx Fire IR Map
ID-NCF-000676
20 September 2021, 2023 PDT
11,634 Interpreted acres

Scale: 1:65,000
Projection: WGS 1984
Produced by: Owyhee Air Research, LLC
IR Interpreter: D. Merriman
Contact: fire@owyheeair.com (208) 442-5405

- Legend**
- Isolated Heat
 - ▨ Intense Heat
 - ▭ Burn Perimeter
 - ▨ Scattered Heat



Copyright © 2013 National Geographic Society, i-cubed