

Briefing

Pioneer
ID-POS-000617
08/03, Day

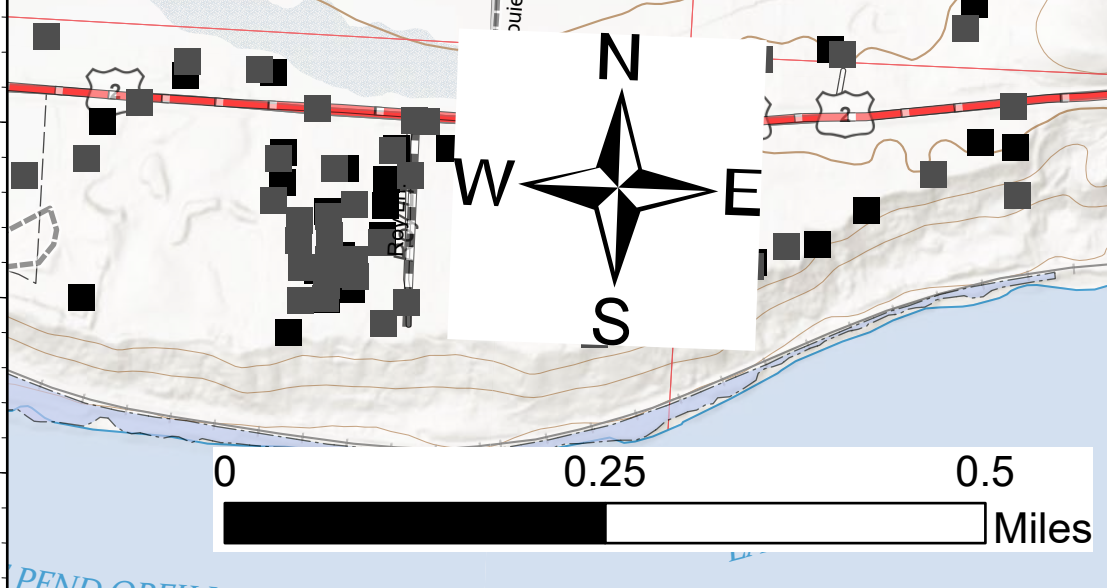
355 acres at 08/01/2021 12:40 hrs

Div W

Div Y

Div C

- Helispot
- ⌘ Division Break
- ▢ Incident Command Post
- ▢ Drop Point
- Other
- Water Source
- ⊗ Completed Dozer Line
- ⊗ Completed Hand Line
- ⊗ Completed Road as Line
- Fire Edge
- Contained Line
- ▭ Wildfire Daily Fire Perimeter
- ▭ State Public Lands
- ▭ Other State Lands
- ▭ Stimson Ownership
- ▭ Riley Creek Timber Ownership
- ▭ State Ownership
- ▭ Forest Service Ownership
- Structures
- Structures (Additional)
- County
- Highway
- Secondary
- Spur
- Trail



JIB
8/2/2021 1723
Acres from IR/Line Align
IDTM North American 1983 Datum.
Lat/Long Grid

