

Briefing

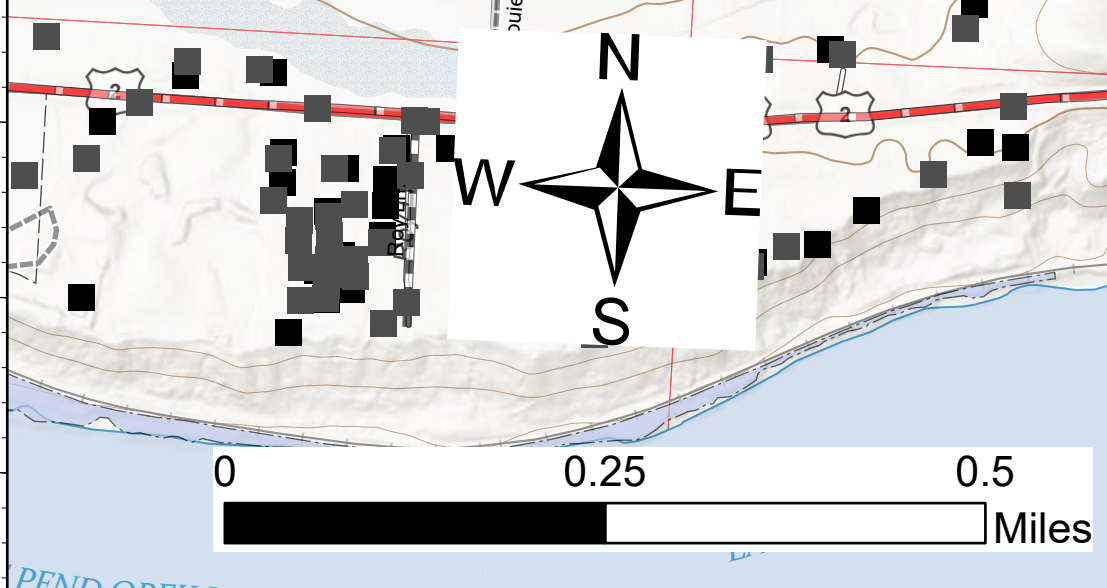
Pioneer
ID-POS-000617
08/04, Day

355 acres at 08/01/2021 12:40 hrs

Div W

Div C

- Helispot
- ⌘ Division Break
- ▢ Incident Command Post
- ▢ Drop Point
- Other
- ⊕ Water Source
- ⊗ Completed Dozer Line
- ⊗ Completed Hand Line
- ⊗ Completed Road as Line
- ▬ Fire Edge
- ▬ Contained Line
- ▬ Wildfire Daily Fire Perimeter
- ▬ State Public Lands
- ▬ Other State Lands
- ▬ Stimson Ownership
- ▬ Riley Creek Timber Ownership
- ▬ State Ownership
- ▬ Forest Service Ownership
- ▣ Structures
- ▣ Structures (Additional)
- ⋯ County
- ▬ Highway
- ⋯ Secondary
- ⋯ Spur
- ⋯ Trail



JIB
8/3/2021 1612
Acres from IR/Line Align
IDTM North American 1983 Datum.
Lat/Long Grid

Geospatial Technology and Applications Center (GTAC), US Forest Service. Sources: ESRI, ArcGIS, USGS, National Geographic, GSA, Geoland, FEMA, Intermap and the GIS user community