

# Incident Action Plan

## Pioneer Fire

ID-POS-000617

POS036-21

Idaho Department of Lands-Pend Orielle Supervisory Area

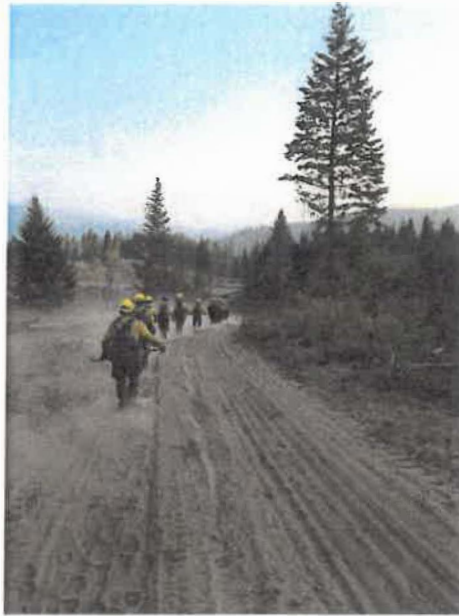


Photo Credit: PENN Crew

**North Idaho Type III Team-Team 1**  
**Incident Commander-Ryan Jackson**

**0700-2000 Saturday-Monday August 7-9, 2021**



<b>INCIDENT OBJECTIVES</b>	1. Incident Name Pioneer	2. Date 08/06/2021	3. Time 1700
----------------------------	-----------------------------	-----------------------	-----------------

4. Operational Period  
08/07-9/2021 0700-2000 Saturday-Monday

- Provide for firefighter and public safety by implementing Lookouts-Communications-Escape Routes-Safety Zones (LCES) and Incident Response Pocket Guide (IRPG).
- Minimize acreage burned and timber lost consistent with sound firefighting tactics within the constraints of firefighter and public safety. Use wildland fire tactics to keep fire away from structures and private land.
- Keep the fire west of Highway 57, south of Saddler creek, north of Bodie Canyon . Keep fire on endowment land to the west.
- Maintain strong relations with county and local officials.

6. Operational Period Command Emphasis:

CONTROL OBJECTIVES:  
Contain fire to smallest footprint within the private land to:


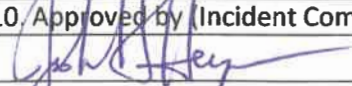
- Continue to mop-standards to secures Fireline edge
- Continue grid operations for new spots in the green.

7. General Safety Message:

- Drink plenty of water - keep hydrated.
- Maintain 2:1 work/rest ratio.
- Drive with headlights on.
- Follow all standard rules and guidelines, refer to IRPG.
- Establish and Maintain situational awareness and LCES.
- The use documented LCES, 10 standard orders, and 18 watch out situations on ICS 215R

8. Attachment (mark if attached)

- |  |   |  |   |
|--|---|--|---|
| <input checked="" type="checkbox"/> ICS 202          | Fire Behavior Forecast                      | <input checked="" type="checkbox"/> Communication Plan | <input checked="" type="checkbox"/> Incident Maps |
| <input checked="" type="checkbox"/> ICS 203          | <input checked="" type="checkbox"/> ICS 204 | <input checked="" type="checkbox"/> Safety Message     | <input checked="" type="checkbox"/> Line 8        |
| <input checked="" type="checkbox"/> Weather Forecast | ICS 220                                     | <input checked="" type="checkbox"/> ICS 206            | <input checked="" type="checkbox"/> Unit Log      |

9. Prepared by (Planning Section Chief) Monika Wood 	10. Approved by (Incident Commander) 
--	--


<b>1. Incident Name:</b> Pioneer		<b>2. Operational Period:</b> Date From: 08/07-09/21 Date To: 08/07-09/21 Time From: 0700 Time To: 2000	
<b>3. Incident Commander(s) and Command Staff:</b>		<b>7. Operations Section:</b>	
IC/UCs	Ryan Jackson	Chief	
		Deputy	Line Operations
Deputy	Otto Largen	Staging Area	Planning Operations
Safety Officer		<b>Branch</b>	
Public Info. Officer (FS)		Branch Director	
Public Info Officer (IDL)	Scott Phillips	Division/Group	Charlie
<b>4. Agency/Organization Representatives:</b>		Division/Group	Whiskey
USFS REP		Division/Group	
USFS REP DFMO		Division/Group	
IDL AA	Tom Fleer	Division/Group	
IDL Area Fire Warden	Ashley Stoneham	<b>Branch</b>	
USFS REAF		Branch Director	
Sheriff		Deputy	
<b>5. Planning Section:</b>		Division/Group	
Chief		Division/Group	
Deputy		Division/Group	
Resources Unit		Division/Group	
Situation Unit		Division/Group	
Documentation Unit		<b>Branch</b>	
Demobilization Unit		Branch Director	
Technical Specialists		Deputy	
GIS		Division/Group	
FBAN		Division/Group	
Incident Meteorologist		Division/Group	
<b>6. Logistics Section:</b>		Division/Group	
Chief		Division/Group	
Deputy		<b>Air Operations Branch</b>	
<b>Support Branch</b>		Air Ops Branch Dir.	
Director			
Supply Unit			
Base Camp Manager		<b>8. Finance/Administration Section:</b>	
Base Camp Manager		Chief	
<b>Service Branch</b>		Deputy	
Director		Cost Unit	
Communications Unit		EQRC	
Medical Unit		PTRC	
<b>9. Prepared by:</b> Name: M. Wood _____ Position/Title: PSC3 _____ Signature: <i>Monika Wood</i>			

<b>DIVISION ASSIGNMENT LIST</b>			1. Branch		2. Division/Group <b>Charlie</b>			
3. Incident Name <b>Pioneer</b>			4. Operational Period Date: <b>August 7, 2021</b> Time: <b>Day 0700 - 2000</b>					
5. Operations Personnel								
Operations Chief				Division/Group Supervisor				
Operations Chief-Planning				Air Attack Supervisor				
Safety Officer								
6. Resources Assigned this Period								
Strike Team/Task Force/ Resource Designator		Leader		Number Persons	Trans. Needed	Drop Off PT./Time	Pick Up PT./Time	Tentative Last Work Day
1.	E-62 SGS ENG 17	Sherlock		2	No	DP30/0700		8/13
2.	E-29 IFM ENG 213*	Ailport		3	No	DP30/0700		8/13
3.								
4.								
5.								
6.								
7.								
8.								
9.								
10.								
11.								
12.								
13.								
14.								
15.								
16.								
17.								
18.								
19.								
7. Control Operations Continue to mop up standards to secure Fireline edge. Continue grid operations for new spots in the green.								
8. Special Instructions <ul style="list-style-type: none"> <li>• Patrol fire line which staying mobile for IA</li> <li>• Secure/mop-up 100 feet along fire perimeter. Removing any unburnt fuels. Grid for new spots in the green.</li> </ul>								
9. Division/Group Communication Summary								
Function	Frequency-RX	Frequency-TX	Channel	Function	Frequency	Frequency-TX	Channel	
Command Repeater	159.3375/100.0	151.4375/136.5	Schweitzer	Medical				
TAC	159.4650/77.0	159.4650/77.0	IDL DIR4	Air To Ground	172.3250	172.3250	A/G	
Prepared by (Resource Unit Leader): <b>M. Wood</b>			Approved by (Planning Section Chief): <i>Monika Wood</i>			Date <b>August 6, 2021</b>	Time <b>1700</b>	

<b>DIVISION ASSIGNMENT LIST</b>			1. Branch		4. Division/Group <b>Whiskey</b>		
3. Incident Name <b>Pioneer</b>			4. Operational Period Date: <b>August 7, 2020</b> Time: <b>Day 0700 - 2000</b>				
5. Operations Personnel							
Operations Chief				Division/Group Supervisor			
Operations Chief-Planning				Air Attack Supervisor			
Safety Officer							
6. Resources Assigned this Period							
	Strike Team/Task Force/ Resource Designator	Leader	Number Persons	Trans. Needed	Drop Off PT./Time	Pick Up PT./Time	Tentative Last Work Day
1.	E-100 ENG 606	Kennaly	6	No	DP30/0700		8/16
2.	E-60 IFM ENG 21	Maupin	3	No	DP30/0700		8/13
3.							
4.							
5.							
6.							
7.							
8.							
9.							
10.							
11.							
12.							
13.							
14.							
15.							
16.							
17.							
18.							
19.							
11. Control Operations Continue to mop up standards to secure Fireline edge. Continue grid operations for new spots in the green							
12. Special Instructions <ul style="list-style-type: none"> <li>• Patrol fire line which staying mobile for IA</li> <li>• Secure/mop-up 100 feet along fire perimeter. Removing any unburnt fuels. Grid for new spots in the green.</li> </ul>							
9. Division/Group Communication Summary							
Function	Frequency	System	Channel	Function	Frequency	System	Channel
Command Repeater	159.3375/100.0	151.4375/136.5	Schweitzer	Command			
TAC	159.3000/77.0	159.3000/77.0	IDL Direct 3	Air To Ground	172.3250	172.3250	A/G
Prepared by (Resource Unit Leader): <b>M. Wood</b>			Approved by (Planning Section Chief): <i>Monika Wood</i>			Date August 6, 2021	Time 1700

<b>INCIDENT RADIO COMMUNICATIONS PLAN</b>		1. Incident Name: <b>Pioneer</b>		2. Date/Time Prepared <b>08/01/2021</b>		3. Operational Period Date/Time <b>08/07/2021</b>	
<b>CH</b>	<b>Rx</b>	<b>RX CG</b>	<b>TX</b>	<b>TX CG</b>	<b>LABEL</b>	<b>BAND</b>	
1	159.3375	100	151.4375	136.35	Schweitzer	Command	
2	159.3375	100	151.4375	127.3	Hoodoo	FS Repeat	
3	159.2850	77.0	159.285	77.0	IDL Direct 2		
4	159.3000	77.0	159.3000	77.0	IDL Direct 3		
5	151.145		151.145		IDL AGO3		
6	159.465	77.0	159.465	77.0	IDL Direct 4	C/W	
7	154.325	77.0	150.805	77.0	OPS 12		
8	154.07		154.07		TAC 11		
9	154.400		154.400		FTAC19		
10	155.4	162.2	158.76	162.2	EF SCHW		
11	172.325		172.3250		Air to Ground	ATGp	
12	155.2800		155.2800	156.7	EMS 2		
13	156.075	162.2	159.18	162.2	EF_Hoodoo		
14	159.3	127.3	151.325	110.9	Mica IDL		
15	159.3	114.8	151.325	123.0	Black IDL		
16	153.8225	162.2	158.93875	162.2	EF Blacktail		
5. Prepared by (Communications Unit) Monika Wood (PSC3)							



Incident Risk Assessment Worksheet				1. Incident Name/Number		2. Location			
Pioneer Fire				POS036-21					
Identification of Hazards and Risk Assessment				3. Name and Title of Analyst		4. Date			
Brad Belmont Safety 				Friday, July 30, 2021					
5. Pre-Control				7. Post-Control					
8. Location	9. Hazard	10. Hazard Probability	11. Severity Code	12. RAC	13. Hazard Probability	14. Severity Code	15. RAC	16. Acceptable (Yes/No)	Export (Yes/No)
All	Hazard Trees	Frequently A	Catastrophic I	Critical	Occasional C	Catastrophic I	Serious	Yes	Yes
All	Driving & Traffic	Frequently A	Catastrophic I	Critical	Occasional C	Catastrophic I	Serious	Yes	Yes

**Actions**

(double-click in cell then click edit + enter to add a line)

- ~ Follow "Hazard Tree Safety" guidelines, IRPG page 22.
- ~ Post lookouts, or use a spotter in mop-up areas with personnel.
- ~ Don't park vehicles or take breaks in high concentrations of hazard trees.
- ~ Establish trigger points for disengagement during high wind events.
- ~ Remember that the hazard zone extends a minimum of 2 1/2 tree heights.

- ~ Practice "Defensive Driving" techniques on all state highways, county roads and city streets. Adhere to less than or equal to 25 MPH on single lane log haul roads.
- ~ Use spotters when backing.
- ~ Honk horn to alert personnel when backing.
- ~ Keep clutter off dash and inside cab.
- ~ Follow Driving LCES (Lights, Chock blocks, Emergency brake, Seat belts).
- ~ Always use headlights.
- ~ Slow down & maintain control on rough/washboard areas and blind corners.
- ~ Use the 3 second rule for following distance when driving.
- ~ Turn wheels into hill when parking.
- ~ Avoid distractions (eating, cell phones, radio).
- ~ Ensure that windshields are kept clean of dust and bugs.

All	Heat Related illness (HRI)& Dehydration	Frequently A	Critical II	Critical	<ul style="list-style-type: none"> <li>~ Drink Fluids throughout operational period (6-8 qts/shift).</li> <li>~ Maintain water/electrolyte ratio of 3 to 1.</li> <li>~ Carry extra water on line and cache water at drop points.</li> <li>~ Take Frequent breaks, minimum of 10 minutes every hour.</li> <li>~ Allow out of area resources time to acclimatize before expecting peak performance.</li> <li>~ Recognize symptoms of HEAT RELATED ILLNESS which include. <ul style="list-style-type: none"> <li>o Lack of energy</li> <li>o Headaches, dizziness</li> <li>o Lack of rest</li> <li>o No hunger, poor eating habits</li> <li>o Hot skin, and lack of sweating</li> </ul> </li> </ul>	Frequently A	Significant III	Serious	Yes	Yes
All	ATV/UTV use	Likely B	Critical II	Serious	<ul style="list-style-type: none"> <li>~ Ensure equipment is inspected and safe to use.</li> <li>~ Restrict UTV's to max width of 50" on ATV trails due to width and severe out sloped conditions.</li> <li>~ Ensure operator is trained and certified to operate.</li> <li>~ Ensure there is PPE available for operator and passengers compliant with Redbook and/or RMA standards.</li> <li>~ Question if it is mission critical.</li> </ul>	Likely B	Significant III	Moderate	Yes	Yes
All	Heavy Equipment Operations	Likely B	Catastrophic I	Critical	<ul style="list-style-type: none"> <li>~ Ensure communications are established with operators.</li> <li>~ Use hand signals if other communications are unavailable.</li> <li>~ Maintain a 50'-100' exclusion area around equipment and increase it to 1 1/2 times tree height when in timber.</li> <li>~ Use a spotter when backing.</li> <li>~ Avoid working below heavy equipment.</li> </ul>	Rarely D	Catastrophic I	Moderate	Yes	Yes
All	Air Operations	Occasional C	Catastrophic I	Serious	<ul style="list-style-type: none"> <li>~ Review/Follow Aviation Watch out Situations. IRPG Pg.45-48</li> <li>~ Follow Aerial Retardant Safety, IRPG Page 57</li> <li>~ Do not rely solely on Air for transportation, re-supply or fire activity intel.</li> </ul>	Rarely D	Catastrophic I	Moderate	Yes	Yes
All	Chain Saw Operations	Frequently A	Catastrophic I	Critical	<ul style="list-style-type: none"> <li>~ Follow "Hazard Tree Safety" guidelines, IRPG page 22</li> <li>~ Look up, Look down, Look around for hazard tree indicators.</li> <li>~ Only fell and buck trees within your expertise, and training.</li> <li>~ Follow "Procedural Felling Operations" on page 85 in IRPG.</li> <li>~ Do not fall trees during high wind events.</li> <li>~ Ensure proper use of all required PPE.</li> </ul>	Occasional C	Critical II	Moderate	Yes	Yes
All	Severe Weather	Occasional C	Critical II	Moderate	<ul style="list-style-type: none"> <li>~ Review and follow Thunderstorm Safety guidelines in IRPG page 21.</li> <li>~ Observe 30/30 Rule for lightning safety..... page 21, IRPG.</li> <li>~ Establish "Trigger Points" to withdraw, and ensure all know rally site.</li> <li>~ Use "Risk Management" process to determine retreat criteria and actions.</li> <li>~ Carry rain gear and extra food and water if weather limits retreat to ICP.</li> </ul>	Occasional C	Significant III	Minor	Yes	Yes



All	Communications	Likely B	Significant III	Moderate	<ul style="list-style-type: none"> <li>~ Perform radio checks w/supervisor, adjoining crews, ICP &amp; dispatch upon arrival to work area</li> <li>~ Maintain communication with aviation resources, and suppression organization.</li> <li>~ Ensure all know frequency and protocol for contacting resources.</li> <li>~ Utilize the ICS 205.</li> <li>~ Utilize human repeaters when working in dead spots.</li> <li>~ Share weather observations with all personnel assigned to division.</li> <li>~ Establish "Trigger Points" to withdraw.</li> <li>~ Use "Risk Management" process prior to engaging in suppression actions, refer to page 1, IRPG.</li> <li>~ Maintain 8'-10' spacing when working &amp; walking.</li> <li>~ Don't work above any personnel.</li> <li>~ If rain or mop-up water reconstitutes retardant, be alert for slippery conditions.</li> <li>~ Be on the lookout for rolling rocks, debris, or burning material.</li> <li>~ Evaluate necessity to send personnel in areas with limited access.</li> <li>~ Post lookouts (IRPG pg 6).</li> <li>~ Post lookouts (IRPG pg. 7)</li> <li>~ Follow downhill line construction guidelines (IRPG pg. 9)</li> <li>~ Maintain high visibility in work area and wear vest while in roadway.</li> <li>~ Use glow sticks to mark hazards.</li> <li>~ Ensure personnel have a personal light (headlamp).</li> <li>~ Watch for signs of fatigue.</li> <li>~ Take breaks away from areas of known hazard.</li> <li>~ Maintain 6' distancing</li> <li>~ Per CDC: Wearing masks recommended, regardless of vaccination status, when in poorly ventilated environments and/or in contact with unfamiliar personnel.</li> <li>~ Wash Hands with warm water and soap or hand sanitizer</li> <li>~ Don't touch your face (mouth, nose, eyes etc)</li> </ul>	Occasional C	Significant III	Minor	Yes	Yes
All	Extreme Fire Behavior	Likely B	Catastrophic I	Critical		Occasional C	Significant III	Minor	Yes	Yes
All	Steep Terrain & Rolling Debris	Frequently A	Significant III	Serious		Occasional C	Significant III	Minor	Yes	Yes
All	Downhill Line Construction	Likely B	Critical II	Serious		Rarely D	Critical II	Minor	Yes	Yes
All	Night Operations	Likely B	Significant III	Moderate		Likely B	Minor IV	Minor	Yes	Yes
All	COVID-19	Occasional C	Critical II	Moderate		Rarely D	Significant III	Major/plus	Yes	Yes

## HEALTH AND SAFETY MESSAGE

***SAFETY*** starts with ***YOU***

We are **ALL** accountable for **SAFE** behaviors

INCIDENT: Pioneer Fire

DATE: August 7-9, 2021

### **3 Day Message for Transition back to the District:**

**TRANSITION:** The team is handing the fires back over to the District. Make sure that all pertinent information is transferred to the correct persons. Make sure all communication loops are closed and understood. Pass on what was done and what was not done to the correct person. Set the new IC up for success and answer all the questions.

**OPERATIONS:** Make sure that the goals and objectives of the fire are communicated to the District. Make sure that all the tasks that are not completed are documented and given to the correct person to follow up on. Make sure we are leaving the District in a good place with all questions answered.

**SAFETY:** All Heli spots have been identifies and mapped (see GIS). Drive slow and defensively when going to the fire. Snags are a concern on the fire. Have a safety plan when working around the snag areas. Watch your footing on the fire line. There is steep areas on the fire line


**ASK QUESTIONS IF YOU ARE NOT CLEAR ON WHAT IS EXPECTED.**

**\*\*\*CHANCE FAVORS THE PREPARED FIREFIGHTER\*\*\***



**Safety Officers: Brad Belmont and Don Garringer**



<b>MEDICAL PLAN</b>	1. Incident Name Pioneer Fire	2. Date Prepared 08/06/21	3. Time Prepared 0900	Operational Period 08/05/21 <b>UNTIL REVISED</b>			
	<b>5. Incident Medical Aid Station</b>						
Medical Aid Stations		Location		Paramedics Yes No			
Line EMT Marty Steinhagen		Division W (Day), ICP (2000-2130 Hrs.)					X
<b>6. Transportation</b>							
<b>A. Ambulance Services</b>							
Name	Address		Phone	Level of Service ALS BLS			
Bonner County EMS	Priest River, ID		208-265-5525	X			
<b>B. Incident Emergency Medivac Air Ambulance</b>							
Name	Location		Hoist	ALS	BLS		
Spokane County Sheriff's Dept. Rescue 3	Spokane 208-265-5225			X			
8 Papa Alpha	Smelterville, ID (208-783-2363)						
Life Flight	Spokane or Sand Point (800-232-0911)			X			
Two Bear	Montana (406-755-4297)		YES				X
<b>7. Hospitals</b>							
Name	Helipad LAT/LONG	Travel Time Air Ground		Phone	Helipad Yes No	Burn Center Yes No	
Bonner General	Lat 47° 32.878' X Long 116° 07.817'	10 min	30 min	208-263-1441	X		X
Urgent Care of Sandpoint	302 S 1 <sup>st</sup> Ave B Sandpoint		30 Min	208-265-4383		X	X
Newport, WA	Lat 48° 10.91 X Long 117° 02.96	5 min	11 min	509-447-2441	X		X
Kootenai Health CDA (Trauma Cntr, Level 2)	Lat 47° 45.685' X Long 116° 41.684'	35 min	1.5 hr	208-625-4000	X		X
Sacred Heart Medical Center Spokane	Lat 47° 38.500' X Long 117° 24.800'	35 min	1.5 hr	509-474-3131	X		X
Harbor View Medical Seattle (Trauma Cntr, Level 1)	Lat 47° 36.238' X Long 122° 19.461'	3.0 Hrs.	7 Hrs.	206-744-3000	X		X
<b>8. Medical Emergency Procedures</b>							
<p>For a non-emergency incident, work through chain of command to report and transport injured personnel as necessary.</p> <p>For a medical emergency identify on-scene incident commander by name and position and announce "Medical Emergency" to initiate a response from Coure D'Alene Dispatch Center (CDC) for emergency medical assistance. Follow Medical Incident Report (8 line) in the IAP or refer to incident Response Pocket Guide Page 118.</p>							
Prepared by Brad Belmont 				Reviewed by (Safety Officer) Don Garringer			

# MEDICAL PLAN (ICS 206 WF)

Controlled Unclassified Information//Basic

## Medical Incident Report

**FOR A NON-EMERGENCY INCIDENT, WORK THROUGH CHAIN OF COMMAND TO REPORT AND TRANSPORT INJURED PERSONNEL AS NECESSARY.**

**FOR A MEDICAL EMERGENCY: IDENTIFY ON SCENE INCIDENT COMMANDER BY NAME AND POSITION AND ANNOUNCE "MEDICAL EMERGENCY" TO INITIATE RESPONSE FROM IMT COMMUNICATIONS/DISPATCH.**

**Use the following item to communicate situation to communications/dispatch.**

**1. CONTACT COMMUNICATIONS / DISPATCH** (Verify correct frequency prior to starting report)

*Ex: "Communications, Div. Alpha. Stand-by for Emergency Traffic."*

**2. INCIDENT STATUS:** Provide incident summary (including number of patients) and command structure.

*Ex: "Communications, I have a Red priority patient, unconscious, struck by a falling tree. Requesting air ambulance to Forest Road 1 at (Lat./Long.) This will be the Trout Meadow Medical, IC is TFLD Jones. EMT Smith is providing medical care."*

Severity of Emergency / Transport Priority	<p><b>RED / PRIORITY 1 Life or limb threatening injury or illness. Evacuation need is IMMEDIATE</b>  <i>Ex: Unconscious, difficulty breathing, bleeding severely, 2° - 3° burns more than 4 palm sizes, heat stroke, disoriented.</i></p> <p><b>YELLOW / PRIORITY 2 Serious Injury or illness. Evacuation may be DELAYED if necessary.</b>  <i>Ex: Significant trauma, unable to walk, 2° - 3° burns not more than 1-3 palm sizes.</i></p> <p><b>GREEN / PRIORITY 3 Minor Injury or illness. Non-Emergency transport</b>  <i>Ex: Sprains, strains, minor heat-related illness.</i></p>	
Nature of Injury or Illness & Mechanism of Injury		Brief Summary of Injury or Illness <i>(Ex: Unconscious, Struck by Falling Tree)</i>
Transport Request		Air Ambulance / Short Haul/Hoist Ground Ambulance / Other
Patient Location		Descriptive Location & Lat. / Long. (WGS84)
Incident Name		Geographic Name + "Medical" <i>(Ex: Trout Meadow Medical)</i>
On-Scene Incident Commander		Name of on-scene IC of Incident within an Incident <i>(Ex: TFLD Jones)</i>
Patient Care		Name of Care Provider <i>(Ex: EMT Smith)</i>

**3. INITIAL PATIENT ASSESSMENT:** Complete this section for each patient as applicable (start with the most severe patient)

Patient Assessment: See IRPG page 106

Treatment:

**4. TRANSPORT PLAN:**

Evacuation Location (if different): (Descriptive Location (drop point, intersection, etc.) or Lat. / Long.) Patient's ETA to Evacuation Location:

Helispot / Extraction Site Size and Hazards:

**5. ADDITIONAL RESOURCES / EQUIPMENT NEEDS:**

*Example: Paramedic/EMT, Crews, Immobilization Devices, AED, Oxygen, Trauma Bag, IV/Fluid(s), Splints, Rope rescue, Wheeled litter, HAZMAT, Extrication*

**6. COMMUNICATIONS: Identify State Air/Ground EMS Frequencies and Hospital Contacts as applicable**

Function	Channel Name/Number	Receive (RX)	Tone/NAC *	Transmit (TX)	Tone/NAC *
COMMAND					
AIR-TO-GRND					
TACTICAL					

**7. CONTINGENCY: Considerations: If primary options fail, what actions can be implemented in conjunction with primary evacuation method? Be thinking ahead.**

**8. ADDITIONAL INFORMATION:** Updates/Changes, etc.

**REMEMBER:** Confirm ETA's of resources ordered. Act according to your level of training. Be Alert. Keep Calm. Think Clearly. Act Decisively.



116°58'W 116°57.5'W 116°57'W 116°56.5'W 116°56'W 116°55.5'W 116°55'W 116°54.5'W 116°54'W

# IAP

Pioneer  
ID-POS-000617  
08/07/2021, Day

355 acres at 08/01/2021 12:40 hrs

48°14'N  
48°13.5'N  
48°13'N  
48°12.5'N  
48°12'N  
48°11.5'N  
48°11'N  
48°10.5'N  
48°10'N

48°14.5'N  
48°14'N  
48°13.5'N  
48°13'N  
48°12.5'N  
48°12'N  
48°11.5'N  
48°11'N  
48°10.5'N  
48°10'N

## Div W

## Div C

- Helispot
- Division Break
- Incident Command Post
- Drop Point
- Other
- ⊙ Water Source
- Completed Dozer Line
- Completed Hand Line
- Completed Road as Line
- Contained Line
- Wildfire Daily Fire Perimeter
- County
- Highway
- Secondary
- Spur
- Trail

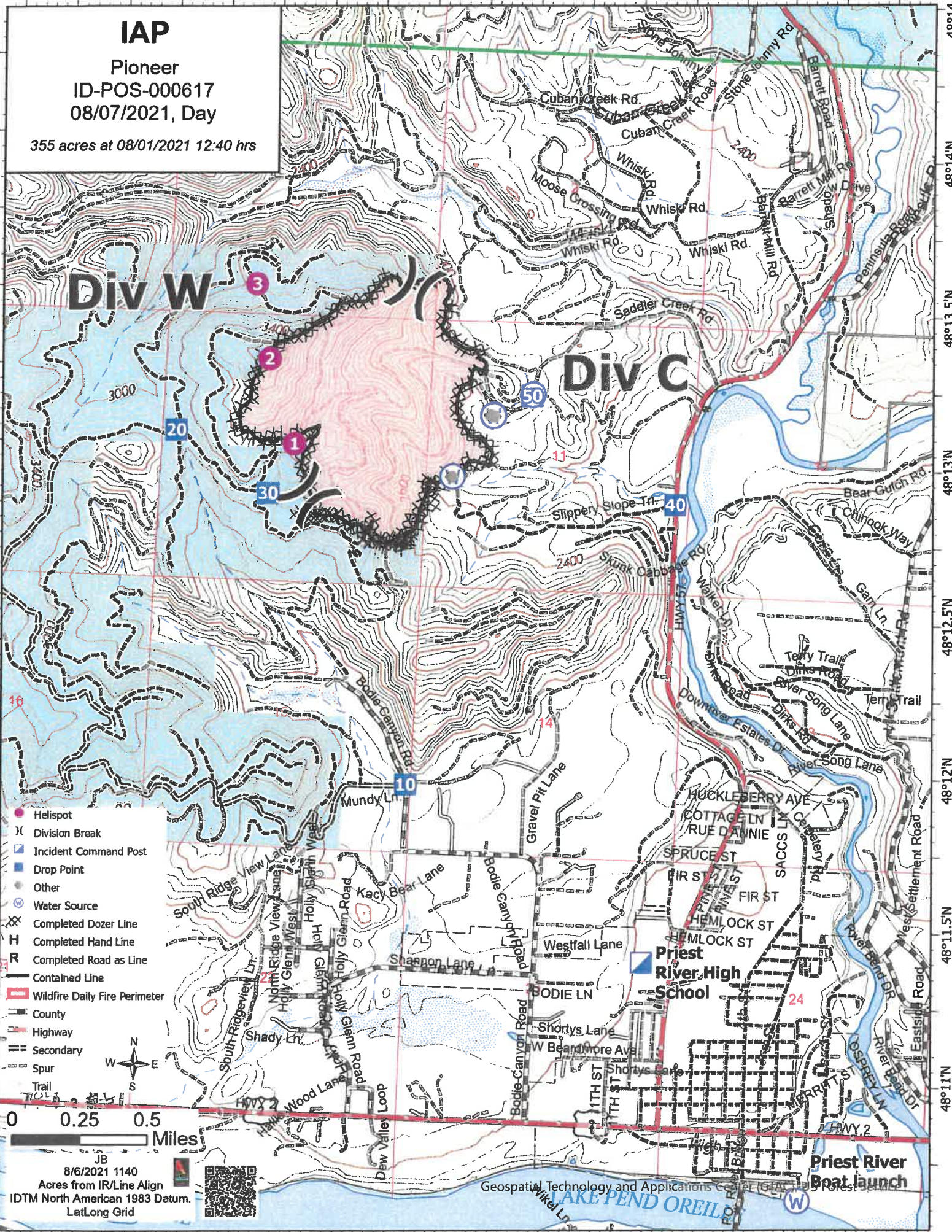


JB  
8/6/2021 1140  
Acres from IR/Line Align  
IDTM North American 1983 Datum.  
Lat/Long Grid



Geospatial Technology and Applications Center (GATAC) Forest Service

116°58'W 116°57.5'W 116°57'W 116°56.5'W 116°56'W 116°55.5'W 116°55'W 116°54.5'W 116°54'W





# Demob Schedule

<b>Resource #</b>	<b>Resource Name</b>	<b>Date</b>	<b>Time:</b>
C-2	Milller T2IA	8/7/2021	0800
E-11	IDL ENG 2351	8/7/2021	0830
E-13	IDL ENG 2352	8/7/2021	0900



