

# Briefing

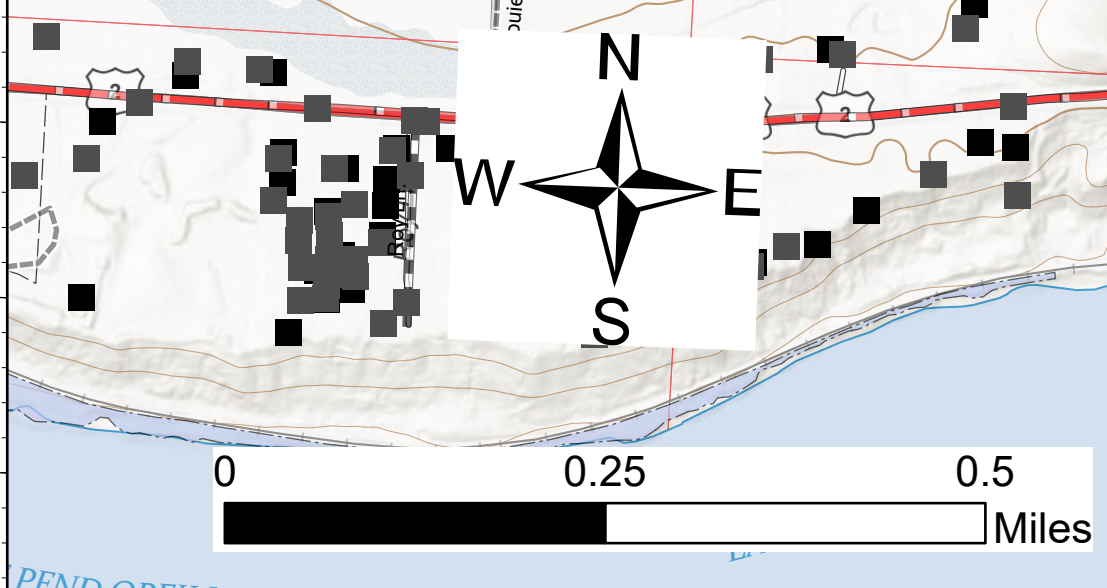
Pioneer  
ID-POS-000617  
08/07, Day

355 acres at 08/01/2021 12:40 hrs

## Div W

## Div C

- Helispot
- ✕ Division Break
- ▣ Incident Command Post
- ▣ Drop Point
- Other
- Water Source
- Completed Dozer Line
- Completed Hand Line
- Completed Road as Line
- Contained Line
- ▭ Wildfire Daily Fire Perimeter
- ▭ State Public Lands
- ▭ Other State Lands
- ▭ Stimson Ownership
- ▭ Riley Creek Timber Ownership
- ▭ State Ownership
- ▭ Forest Service Ownership
- Structures
- Structures (Additional)
- County Road
- Highway
- Secondary Road
- Spur Road
- Trail



JB  
8/6/2021 1103  
Acres from IR/Line Align  
IDTM North American 1983 Datum.  
at Long Grid

Geospatial Technology and Applications Center (GTAC), US Forest Service. Sources: ESRI, ArcGIS, USGS, National Geographic, GSA, Geoland, FEMA, Intermap and the GIS user community