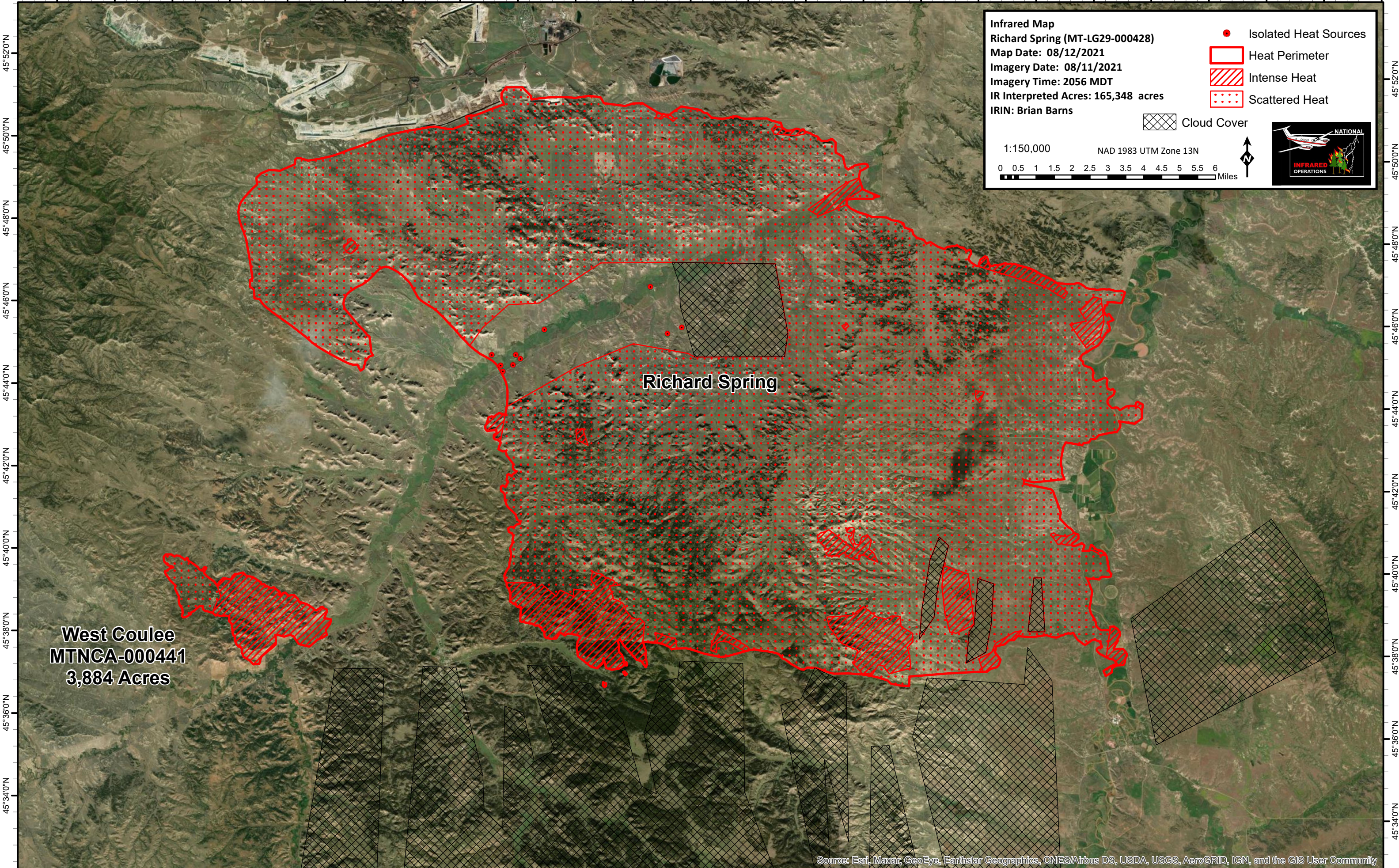


106°54'0"W 106°52'0"W 106°50'0"W 106°48'0"W 106°46'0"W 106°44'0"W 106°42'0"W 106°40'0"W 106°38'0"W 106°36'0"W 106°34'0"W 106°32'0"W 106°30'0"W 106°28'0"W 106°26'0"W 106°24'0"W 106°22'0"W 106°20'0"W 106°18'0"W 106°16'0"W 106°14'0"W 106°12'0"W 106°10'0"W 106°8'0"W


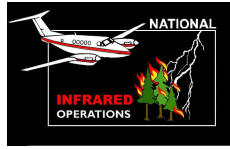


Infrared Map
 Richard Spring (MT-LG29-000428)
 Map Date: 08/12/2021
 Imagery Date: 08/11/2021
 Imagery Time: 2056 MDT
 IR Interpreted Acres: 165,348 acres
 IRIN: Brian Barns

- Isolated Heat Sources
- Heat Perimeter
- Intense Heat
- Scattered Heat
- Cloud Cover

1:150,000 NAD 1983 UTM Zone 13N

0 0.5 1 1.5 2 2.5 3 3.5 4 4.5 5 5.5 6 Miles

West Coulee
MTNCA-000441
3,884 Acres

Richard Spring

106°54'0"W 106°52'0"W 106°50'0"W 106°48'0"W 106°46'0"W 106°44'0"W 106°42'0"W 106°40'0"W 106°38'0"W 106°36'0"W 106°34'0"W 106°32'0"W 106°30'0"W 106°28'0"W 106°26'0"W 106°24'0"W 106°22'0"W 106°20'0"W 106°18'0"W 106°16'0"W 106°14'0"W 106°12'0"W 106°10'0"W 106°8'0"W

45°52'0"N
45°50'0"N
45°48'0"N
45°46'0"N
45°44'0"N
45°42'0"N
45°40'0"N
45°38'0"N
45°36'0"N
45°34'0"N

45°52'0"N
45°50'0"N
45°48'0"N
45°46'0"N
45°44'0"N
45°42'0"N
45°40'0"N
45°38'0"N
45°36'0"N
45°34'0"N