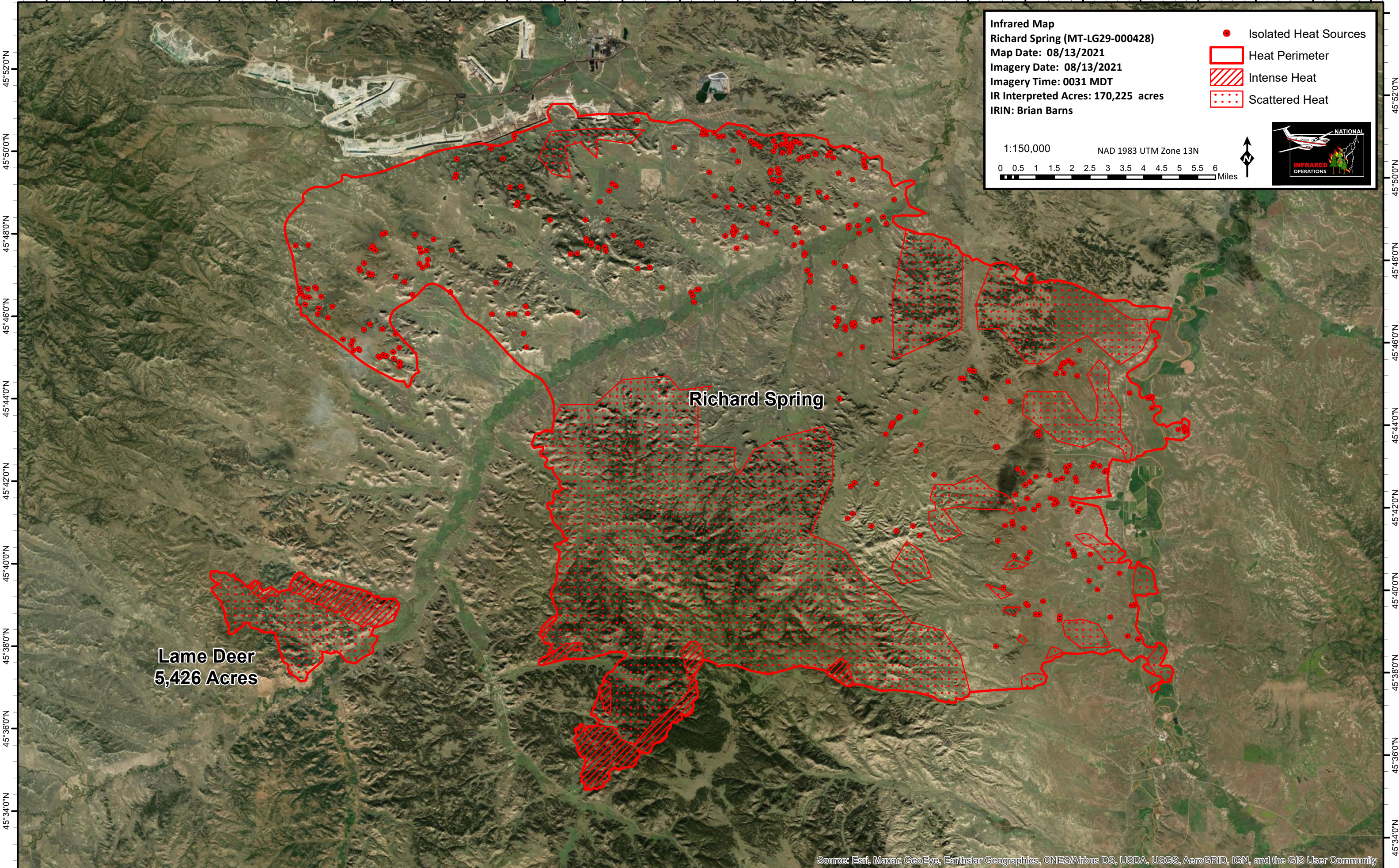


106°56'0"W 106°54'0"W 106°52'0"W 106°50'0"W 106°48'0"W 106°46'0"W 106°44'0"W 106°42'0"W 106°40'0"W 106°38'0"W 106°36'0"W 106°34'0"W 106°32'0"W 106°30'0"W 106°28'0"W 106°26'0"W 106°24'0"W 106°22'0"W 106°20'0"W 106°18'0"W 106°16'0"W 106°14'0"W 106°12'0"W 106°10'0"W



**Infrared Map**  
Richard Spring (MT-LG29-000428)  
Map Date: 08/13/2021  
Imagery Date: 08/13/2021  
Imagery Time: 0031 MDT  
IR Interpreted Acres: 170,225 acres  
IRIN: Brian Barns

- Isolated Heat Sources
- Heat Perimeter
- ▨ Intense Heat
- ⋯ Scattered Heat

1:150,000 NAD 1983 UTM Zone 13N  
0 0.5 1 1.5 2 2.5 3 3.5 4 4.5 5 5.5 6 Miles

Source: Esri, Maxar, GeoEye, Earthstar Geographics, CNES/Airbus DS, USDA, USGS, AeroGRID, IGN, and the GIS User Community