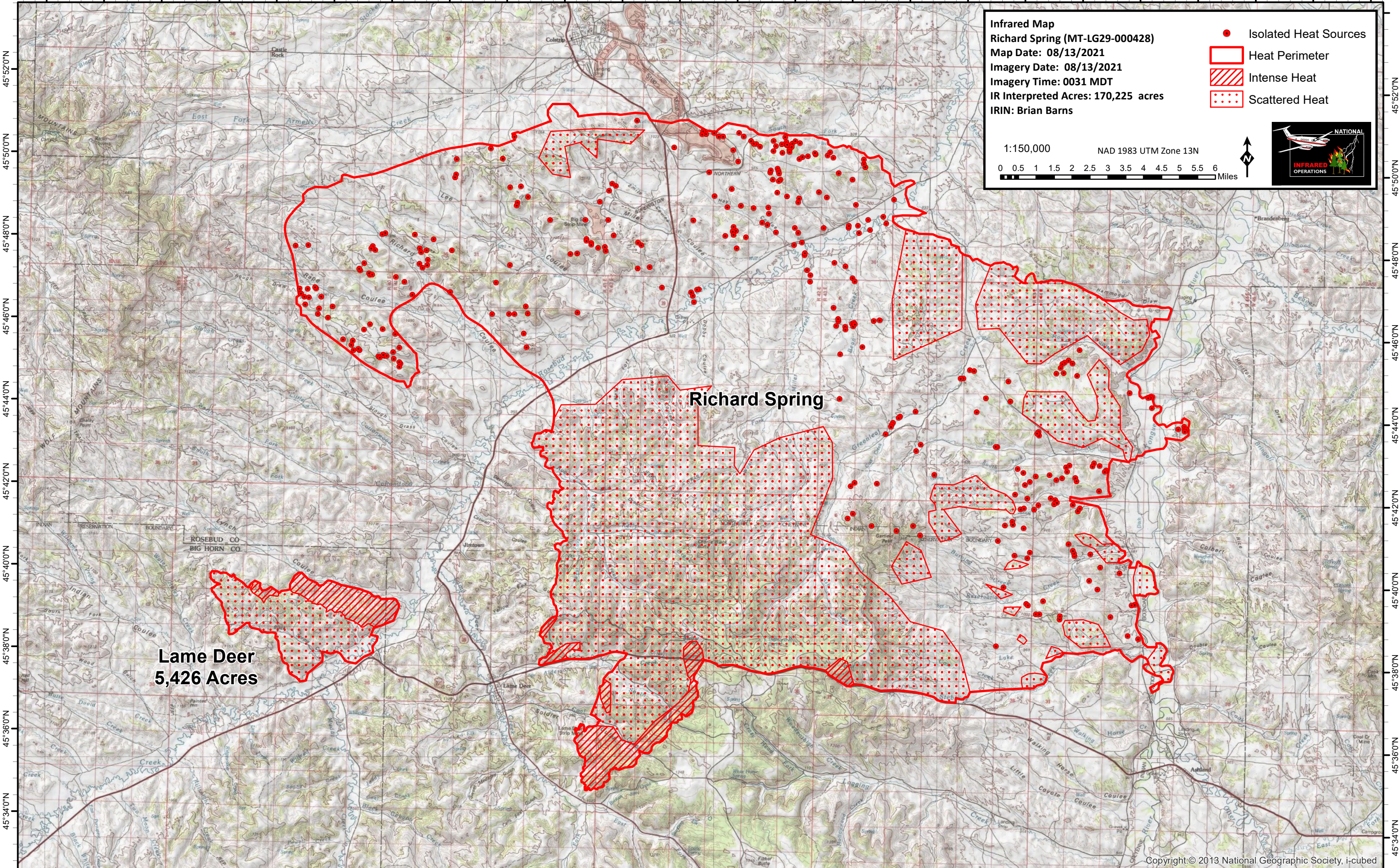


106°56'0"W 106°54'0"W 106°52'0"W 106°50'0"W 106°48'0"W 106°46'0"W 106°44'0"W 106°42'0"W 106°40'0"W 106°38'0"W 106°36'0"W 106°34'0"W 106°32'0"W 106°30'0"W 106°28'0"W 106°26'0"W 106°24'0"W 106°22'0"W 106°20'0"W 106°18'0"W 106°16'0"W 106°14'0"W 106°12'0"W 106°10'0"W


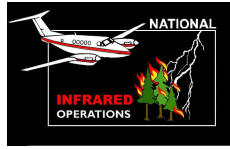


**Infrared Map**  
**Richard Spring (MT-LG29-000428)**  
**Map Date: 08/13/2021**  
**Imagery Date: 08/13/2021**  
**Imagery Time: 0031 MDT**  
**IR Interpreted Acres: 170,225 acres**  
**IRIN: Brian Barns**

- Isolated Heat Sources
- Heat Perimeter
- Intense Heat
- Scattered Heat

1:150,000      NAD 1983 UTM Zone 13N

0 0.5 1 1.5 2 2.5 3 3.5 4 4.5 5 5.5 6 Miles

**Lame Deer**  
**5,426 Acres**

**Richard Spring**

106°56'0"W 106°54'0"W 106°52'0"W 106°50'0"W 106°48'0"W 106°46'0"W 106°44'0"W 106°42'0"W 106°40'0"W 106°38'0"W 106°36'0"W 106°34'0"W 106°32'0"W 106°30'0"W 106°28'0"W 106°26'0"W 106°24'0"W 106°22'0"W 106°20'0"W 106°18'0"W 106°16'0"W 106°14'0"W 106°12'0"W 106°10'0"W