

107°0'0"W 106°58'0"W 106°56'0"W 106°54'0"W 106°52'0"W 106°50'0"W 106°48'0"W 106°46'0"W 106°44'0"W 106°42'0"W 106°40'0"W 106°38'0"W 106°36'0"W 106°34'0"W 106°32'0"W 106°30'0"W 106°28'0"W 106°26'0"W 106°24'0"W 106°22'0"W 106°20'0"W 106°18'0"W 106°16'0"W 106°14'0"W 106°12'0"W 106°10'0"W 106°8'0"W

45°54'0"N
45°52'0"N
45°50'0"N
45°48'0"N
45°46'0"N
45°44'0"N
45°42'0"N
45°40'0"N
45°38'0"N
45°36'0"N
45°34'0"N
45°32'0"N


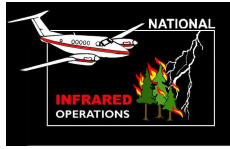
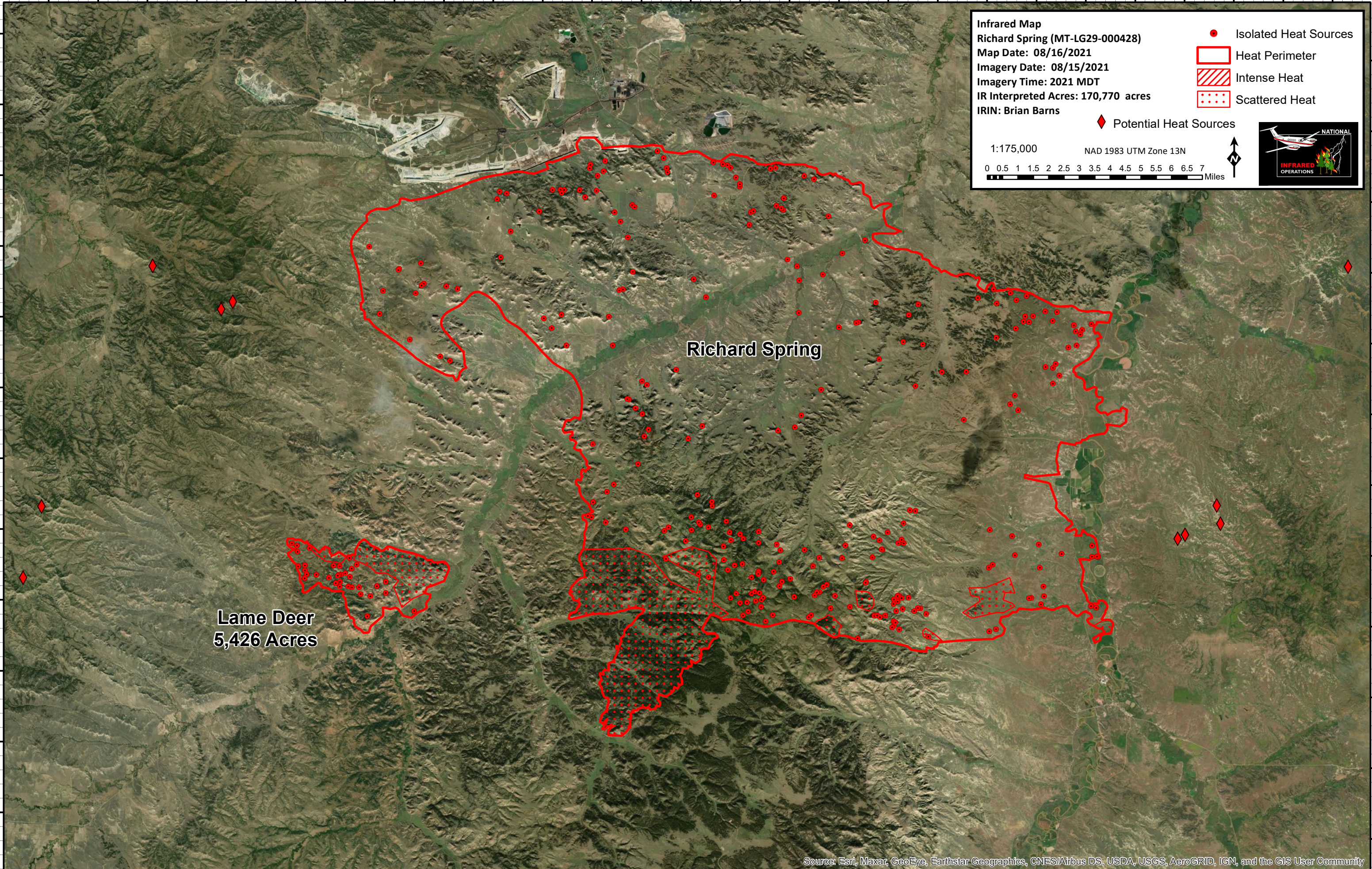
45°54'0"N
45°52'0"N
45°50'0"N
45°48'0"N
45°46'0"N
45°44'0"N
45°42'0"N
45°40'0"N
45°38'0"N
45°36'0"N
45°34'0"N
45°32'0"N

Infrared Map
Richard Spring (MT-LG29-000428)
Map Date: 08/16/2021
Imagery Date: 08/15/2021
Imagery Time: 2021 MDT
IR Interpreted Acres: 170,770 acres
IRIN: Brian Barns

- Isolated Heat Sources
- Heat Perimeter
- Intense Heat
- Scattered Heat
- ◆ Potential Heat Sources

1:175,000 NAD 1983 UTM Zone 13N

0 0.5 1 1.5 2 2.5 3 3.5 4 4.5 5 5.5 6 6.5 7 Miles

Richard Spring

**Lame Deer
5,426 Acres**

107°0'0"W 106°58'0"W 106°56'0"W 106°54'0"W 106°52'0"W 106°50'0"W 106°48'0"W 106°46'0"W 106°44'0"W 106°42'0"W 106°40'0"W 106°38'0"W 106°36'0"W 106°34'0"W 106°32'0"W 106°30'0"W 106°28'0"W 106°26'0"W 106°24'0"W 106°22'0"W 106°20'0"W 106°18'0"W 106°16'0"W 106°14'0"W 106°12'0"W 106°10'0"W 106°8'0"W 106°6'0"W