




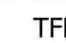


Pilot

Robertson Draw
MT CGF - 210148
6/18/2021 - Day

24,470 acres at 6/17/2021 2142
Acres from IR

-  Incident Command Post
-  Drop Point
-  Repeater
-  Temporary Flight Restriction
-  Fire Edge
-  Dip Site

TFR Number: 1/3808
Altitude: 14,000 feet
Radius: 8 nautical miles

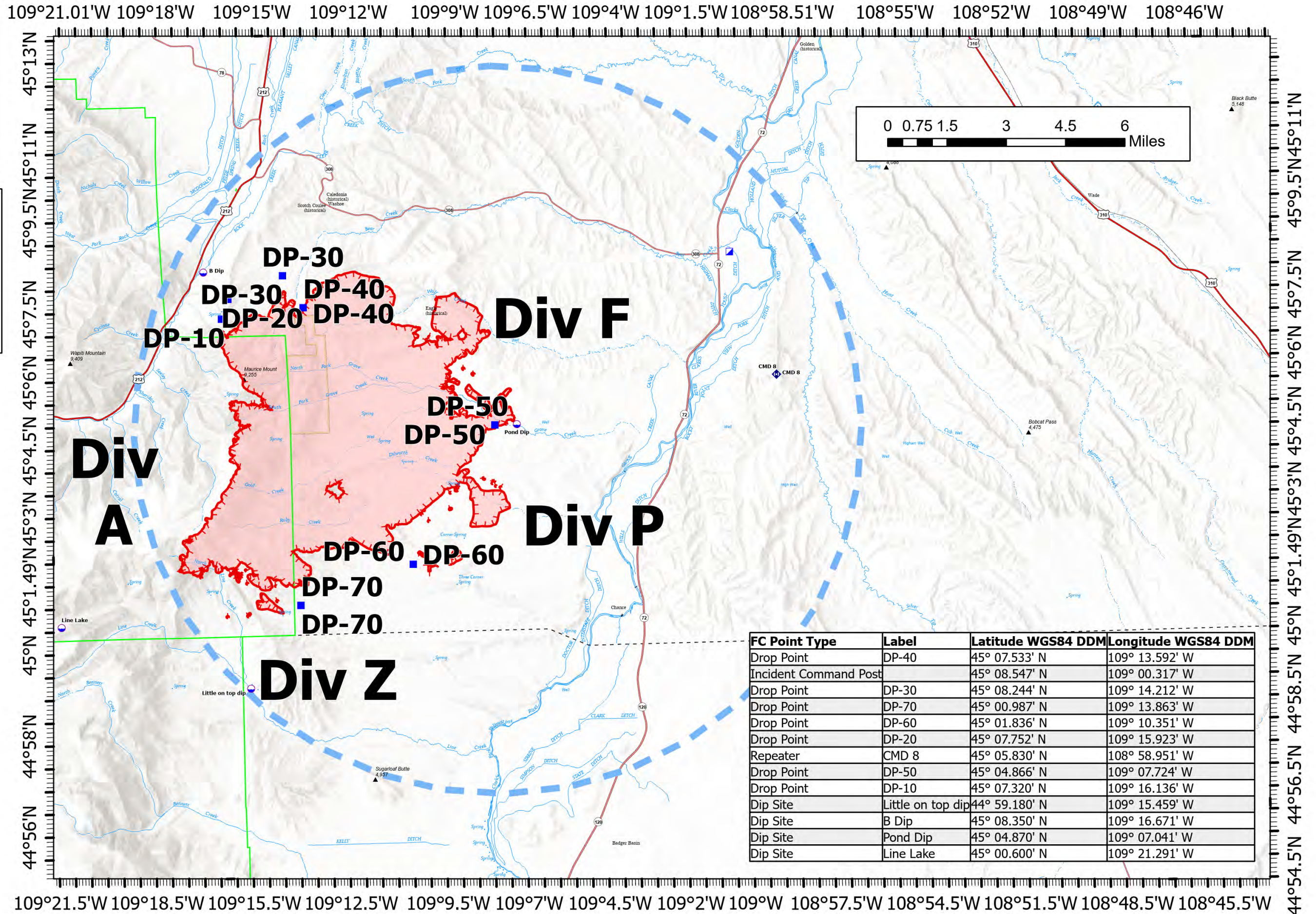


M. Perrin
6/18/2021 0518

North American 1983 Datum. LatLong Grid



<http://bit.ly/2021RobertsonDraw>



FC Point Type	Label	Latitude WGS84 DDM	Longitude WGS84 DDM
Drop Point	DP-40	45° 07.533' N	109° 13.592' W
Incident Command Post		45° 08.547' N	109° 00.317' W
Drop Point	DP-30	45° 08.244' N	109° 14.212' W
Drop Point	DP-70	45° 00.987' N	109° 13.863' W
Drop Point	DP-60	45° 01.836' N	109° 10.351' W
Drop Point	DP-20	45° 07.752' N	109° 15.923' W
Repeater	CMD 8	45° 05.830' N	108° 58.951' W
Drop Point	DP-50	45° 04.866' N	109° 07.724' W
Drop Point	DP-10	45° 07.320' N	109° 16.136' W
Dip Site	Little on top dip	44° 59.180' N	109° 15.459' W
Dip Site	B Dip	45° 08.350' N	109° 16.671' W
Dip Site	Pond Dip	45° 04.870' N	109° 07.041' W
Dip Site	Line Lake	45° 00.600' N	109° 21.291' W