

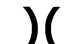

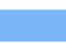

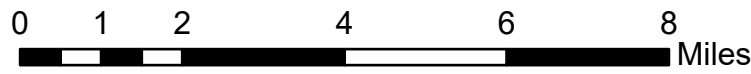


109°25.5'W 109°22.5'W 109°19.5'W 109°16.5'W 109°13'W 109°10'W 109°7'W 109°4.5'W 109°2'W 109°W 108°57.5'W 108°54.5'W 108°51.5'W 108°48.5'W

Pilot
 Robertson Draw
 MT CGF - 210148
 6/19/2021 - Day
 27,556 acres at 6/18/2021 2231
 Acres from IR

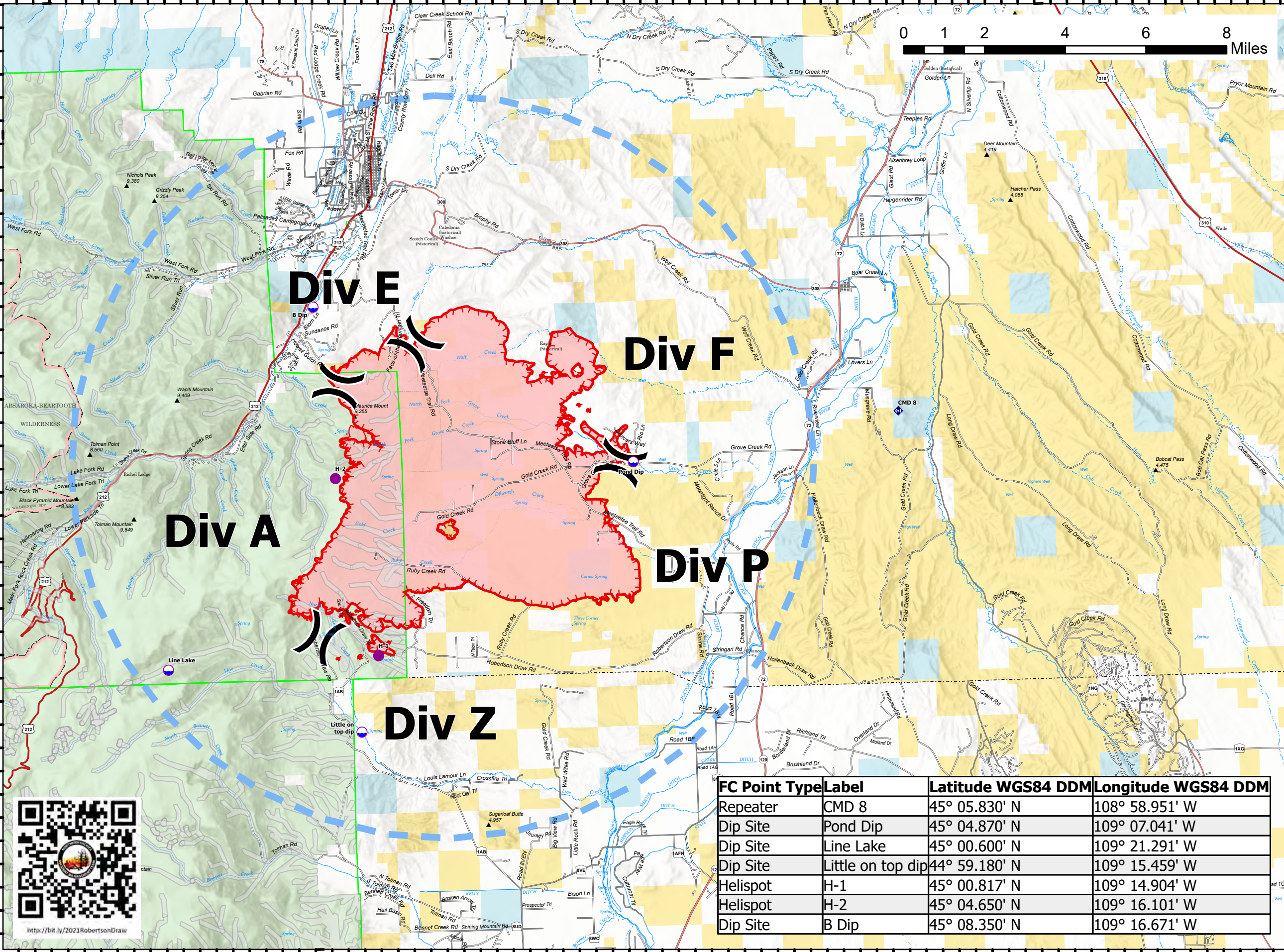
TFR Number: 1/6268
 Altitude: SFC to 14,000 feet
 Radius: 8 nautical miles

-  Dip Site
-  Helispot
-  Division Break
-  Repeater
-  Temporary Flight Restriction
-  Fire Edge



<http://bit.ly/2021RobertsonDraw>

45°13'N
45°11'N
45°9.5'N
45°8'N
45°6.5'N
45°5'N
45°3.5'N
45°2'N
45°0.5'N
44°59'N
44°57'N
44°55'N



45°13'N
45°11'N
45°9.5'N
45°8'N
45°6.5'N
45°5'N
45°3.5'N
45°2'N
45°0.5'N
44°59'N
44°57'N
44°55'N

North American 1983 Datum. LatLong Grid

109°26'W 109°23'W 109°20'W 109°17'W 109°14'W 109°11'W 109°8'W 109°5.5'W 109°3'W 109°0.5'W 108°57.5'W 108°54.5'W 108°51.5'W 108°48.5'W

FC Point Type	Label	Latitude WGS84 DDM	Longitude WGS84 DDM
Repeater	CMD 8	45° 05.830' N	108° 58.951' W
Dip Site	Pond Dip	45° 04.870' N	109° 07.041' W
Dip Site	Line Lake	45° 00.600' N	109° 21.291' W
Dip Site	Little on top dip	44° 59.180' N	109° 15.459' W
Helispot	H-1	45° 00.817' N	109° 14.904' W
Helispot	H-2	45° 04.650' N	109° 16.101' W
Dip Site	B Dip	45° 08.350' N	109° 16.671' W

M. Perrin
 6/19/2021 0559