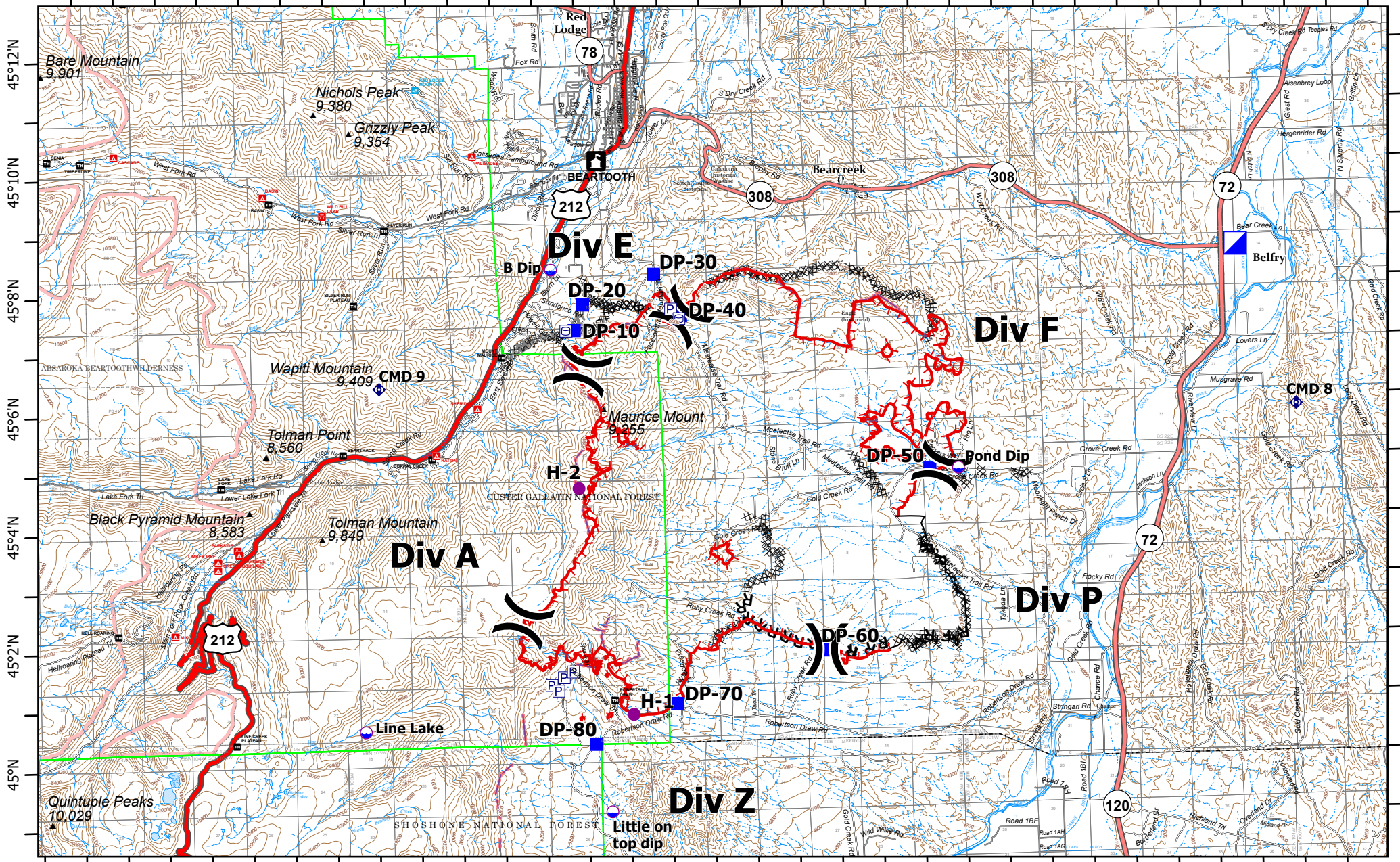


109°28'W 109°26'W 109°24'W 109°22'W 109°20'W 109°18'W 109°16'W 109°14'W 109°12'W 109°10'W 109°8'W 109°6'W 109°4'W 109°2'W 109°0'W 108°58'W



IAP
Robertson Draw
MT CGF - 210148
06/20/2021
IR acres from 06/19/2021 at 2142
29,437 acres

- | | | | | |
|-----------------------|------------------------|----------------------|-------------------|------------------------|
| Pump | Drop Point | Planned Dozer Line | Campground | State Primary Route |
| Water Tank | Repeater | Planned Hand Line | Trailhead | State Secondary Route |
| Dip Site | Completed Dozer Line | Planned Road as Line | Picnic Site | Paved Roads |
| Helispot | Completed Fuel Break | Retardant Drop | Group Picnic Site | Dirt (Not Paved) |
| Division Break | Completed Hand Line | Fire Edge | Ski Area Alpine | Proclaimed FS Boundary |
| Incident Command Post | Completed Road as Line | Contained Line | US Primary Route | FS Wilderness Boundary |

0 1 2 3 4 Miles

Team 4