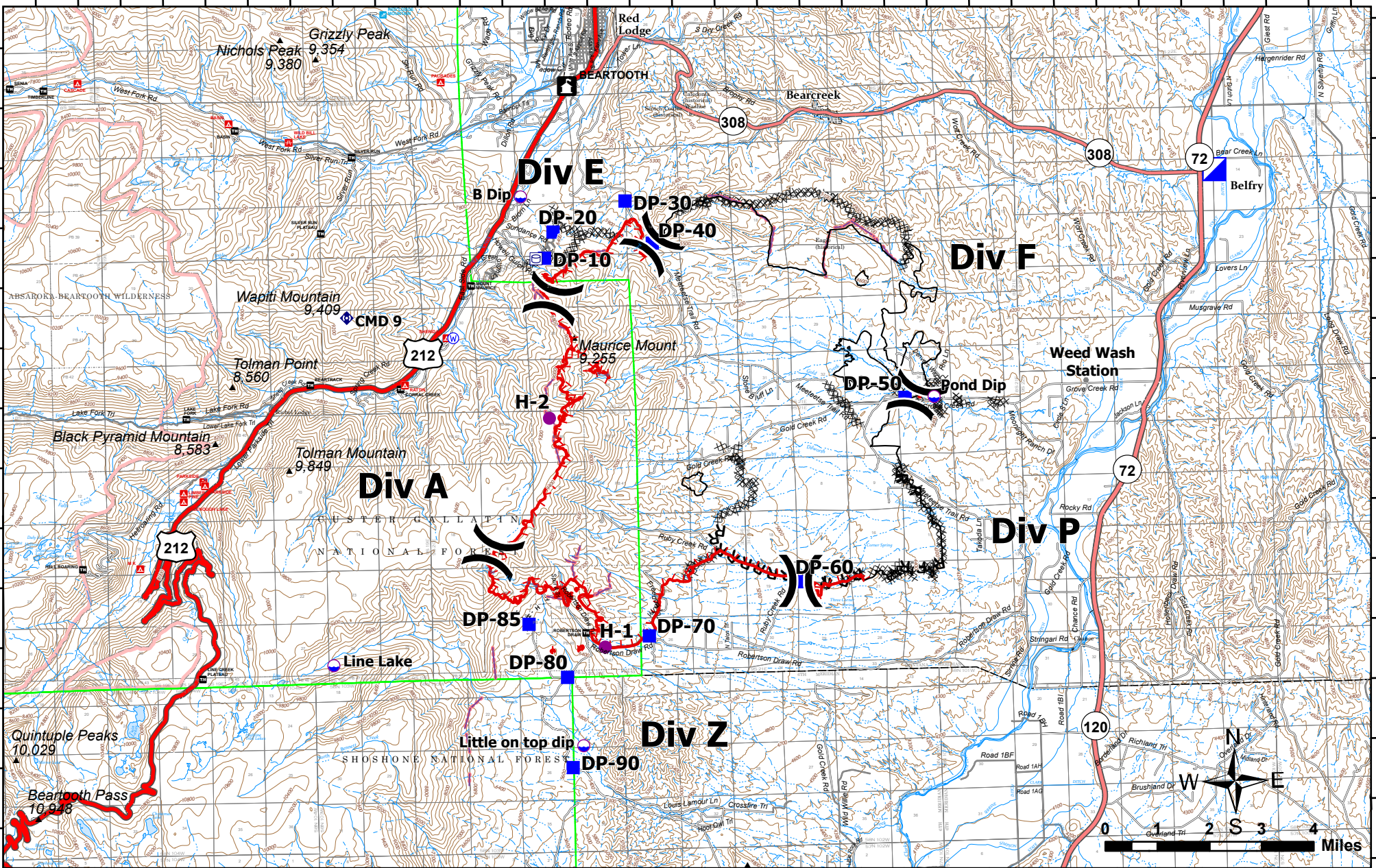


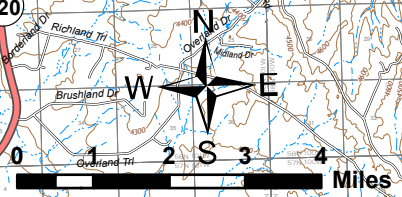
109°28'W 109°26'W 109°24'W 109°22'W 109°20'W 109°18'W 109°16'W 109°14'W 109°12'W 109°10'W 109°8'W 109°6.01'W 109°4'W 109°2'W 109°0'W 108°58'W

45°10'N
45°8'N
45°6'N
45°4'N
45°2'N
45°N
44°58'N



IAP
Robertson Draw
MT BID 210154
06/21/2021
IR acres from 06/19/2021 at 2142
29,474 acres

- | | | | | | |
|-----------------------|-----------------------|--------------------------|----------------|-----------------------|------------------------|
| Water Tank | Other | R Completed Road as Line | Other | Picnic Site | Paved Roads |
| Dip Site | Repeater | Planned Dozer Line | Retardant Drop | Group Picnic Site | Dirt (Not Paved) |
| Helispot | Water Source | H Planned Hand Line | Fire Edge | Ski Area Alpine | Proclaimed FS Boundary |
| Division Break | Completed Dozer Line | R Planned Road as Line | Contained Line | US Primary Route | FS Wilderness Boundary |
| Incident Command Post | Completed Fuel Break | Fence | Campground | State Primary Route | |
| Drop Point | H Completed Hand Line | | Trailhead | State Secondary Route | |



Team 4