
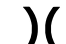
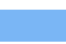



109°25.5'W 109°22.5'W 109°19.5'W 109°16.5'W 109°13'W 109°10'W 109°7'W 109°4.5'W 109°2'W 109°W 108°57.5'W 108°54.5'W 108°51.5'W 108°48.5'W

**Pilot**  
 Robertson Draw  
 MT CGF 210148  
 6/22/2021  
 29,596 acres at 6/21/2021 2111  
 Acres from IR

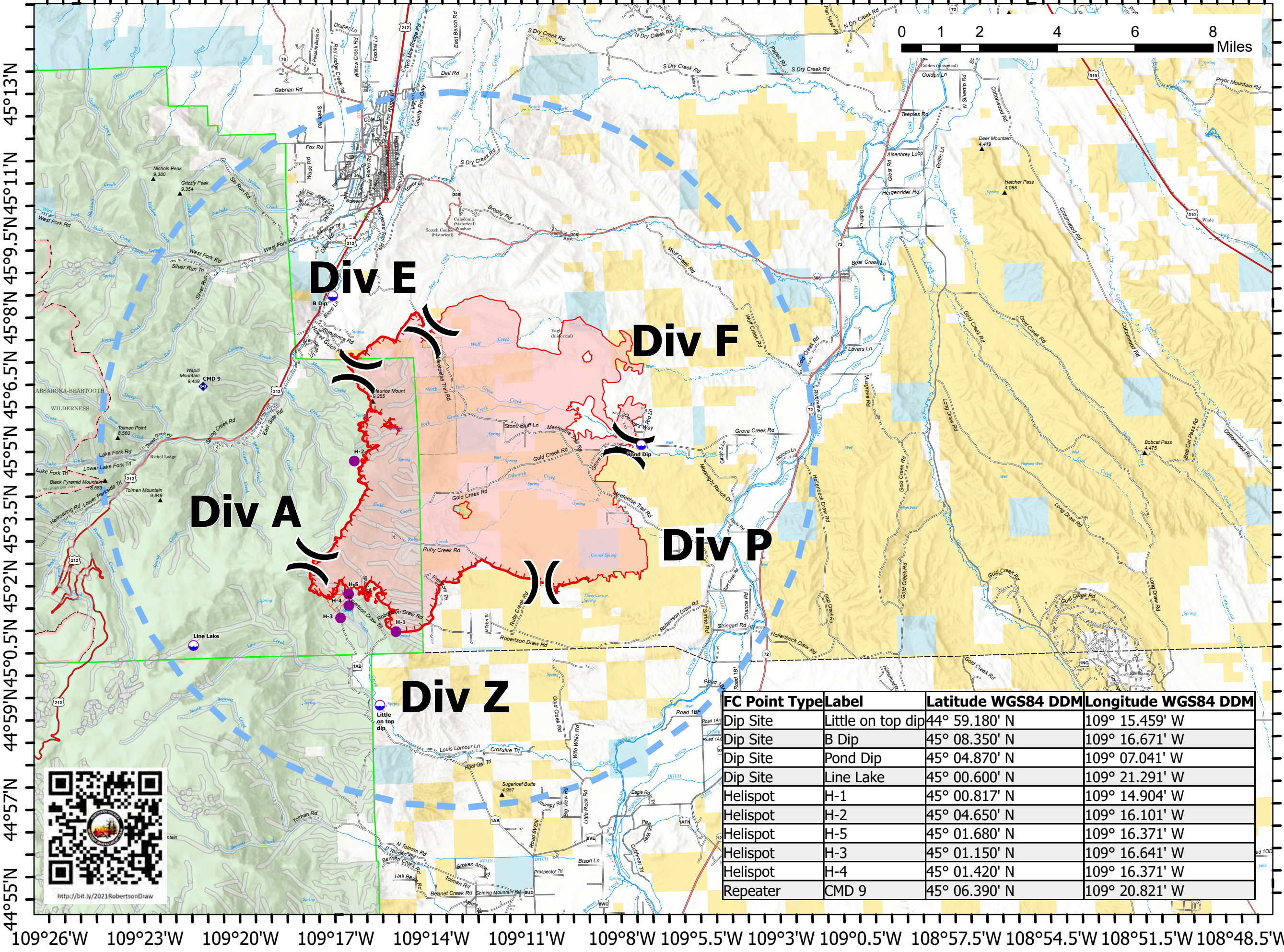
TFR Number: 1/6268  
 Altitude: SFC to 14,000 feet  
 Radius: 8 nautical miles

-  Dip Site
-  Helispot
-  Division Break
-  Repeater
-  Temporary Flight Restriction
-  Fire Edge
-  IR Intense Heat
-  IR Scattered Heat



M. Perrin  
 6/22/2021 0451

North American 1983 Datum. LatLong Grid



<http://bit.ly/2021RobertsonDraw>

FC Point Type	Label	Latitude WGS84 DDM	Longitude WGS84 DDM
Dip Site	Little on top dip	44° 59.180' N	109° 15.459' W
Dip Site	B Dip	45° 08.350' N	109° 16.671' W
Dip Site	Pond Dip	45° 04.870' N	109° 07.041' W
Dip Site	Line Lake	45° 00.600' N	109° 21.291' W
Helispot	H-1	45° 00.817' N	109° 14.904' W
Helispot	H-2	45° 04.650' N	109° 16.101' W
Helispot	H-5	45° 01.680' N	109° 16.371' W
Helispot	H-3	45° 01.150' N	109° 16.641' W
Helispot	H-4	45° 01.420' N	109° 16.371' W
Repeater	CMD 9	45° 06.390' N	109° 20.821' W