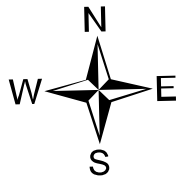
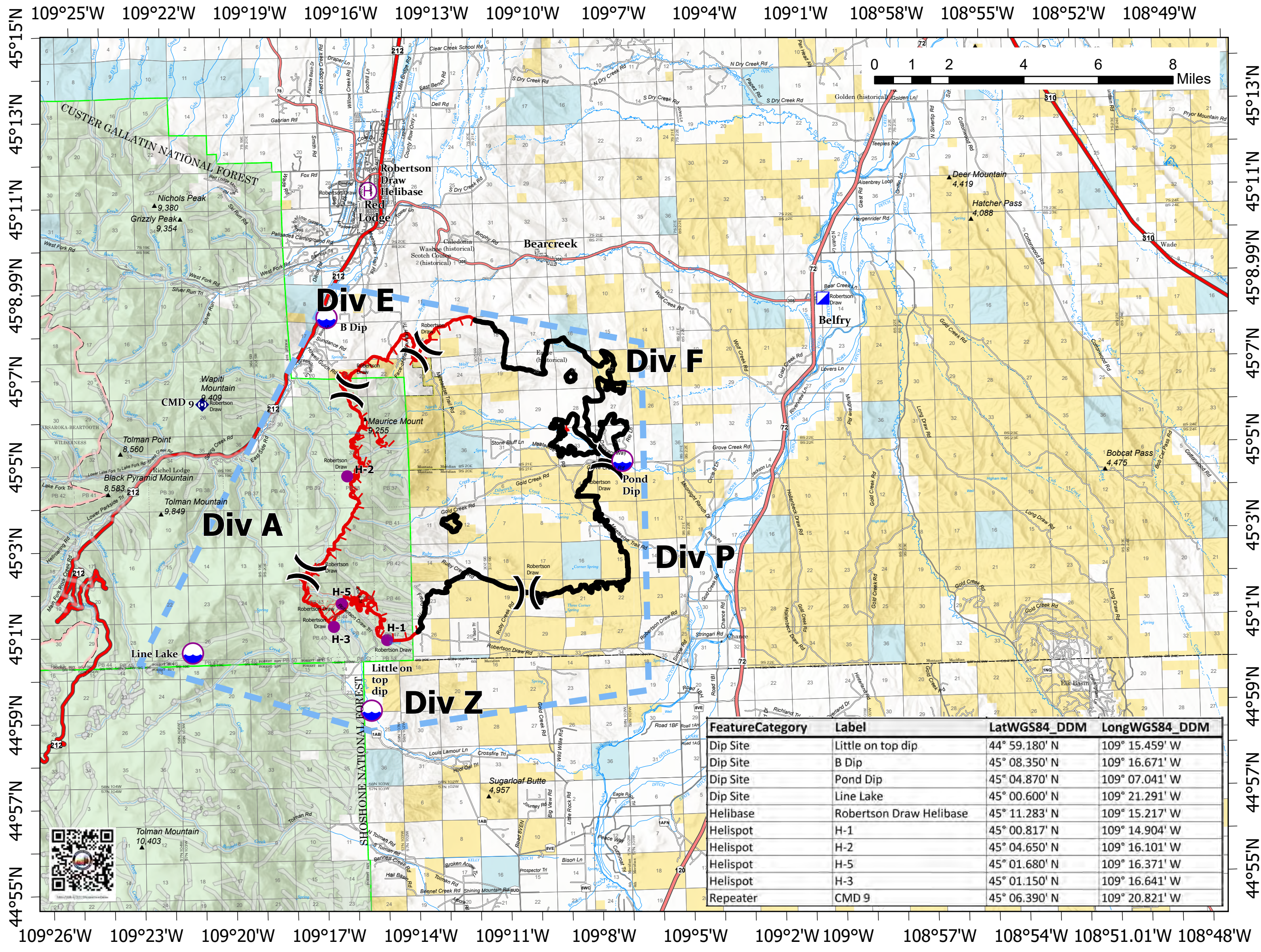


**Pilot**  
 Robertson Draw  
 MT CGF - 210148  
 6/25/2021  
 29,764 acres  
 at 6/22/2021 2118  
 IR

TFR Number: 1/0096  
 Altitude: SFC to 16,000 feet

-  Dip Site
-  Helispot
-  Helibase
-  Division Break
-  Incident Command Post
-  Repeater
-  Temporary Flight Restriction
-  Fire Edge
-  Contained Line
-  IR Intense Heat
-  IR Scattered Heat



**TEAM 4**

Feature	Category	Label	LatWGS84_DDM	LongWGS84_DDM
Dip Site	Little on top dip		44° 59.180' N	109° 15.459' W
Dip Site	B Dip		45° 08.350' N	109° 16.671' W
Dip Site	Pond Dip		45° 04.870' N	109° 07.041' W
Dip Site	Line Lake		45° 00.600' N	109° 21.291' W
Helibase	Robertson Draw Helibase		45° 11.283' N	109° 15.217' W
Helispot	H-1		45° 00.817' N	109° 14.904' W
Helispot	H-2		45° 04.650' N	109° 16.101' W
Helispot	H-5		45° 01.680' N	109° 16.371' W
Helispot	H-3		45° 01.150' N	109° 16.641' W
Repeater	CMD 9		45° 06.390' N	109° 20.821' W