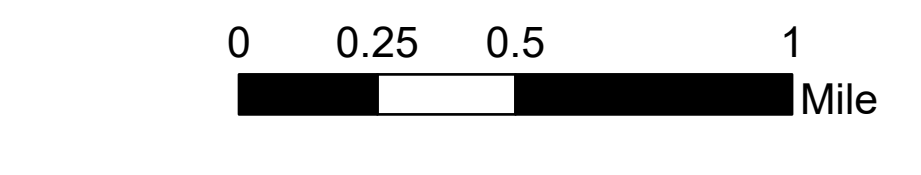
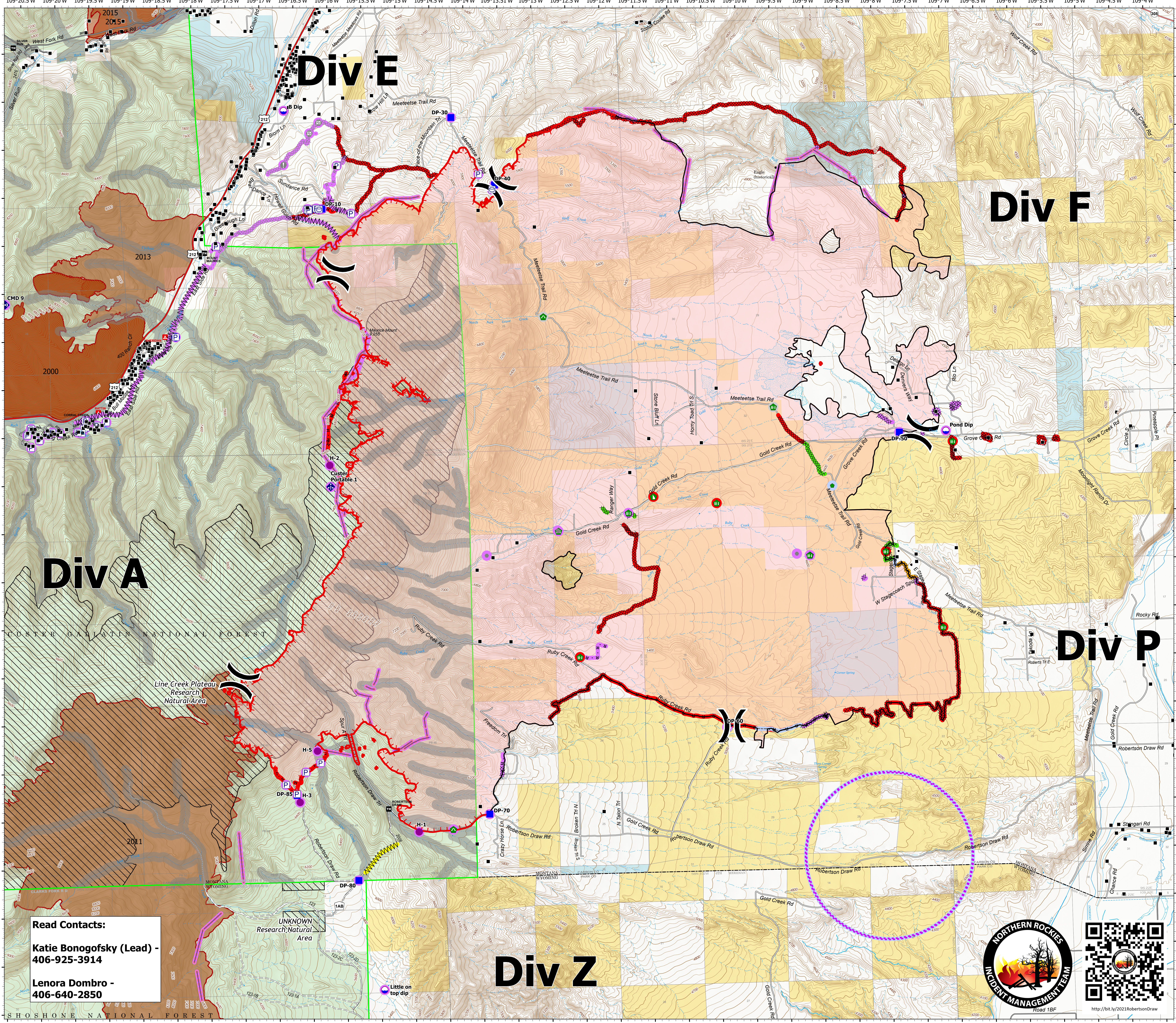


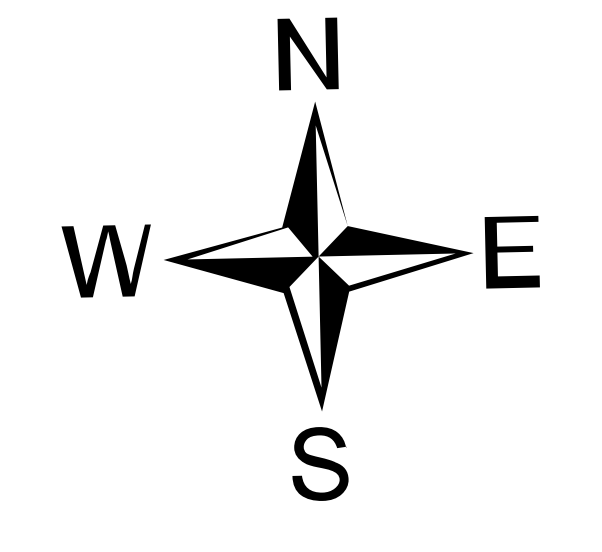
**Suppression
Repair**
Robertson Draw
MT CGF - 210148
6/25/2021
29,764 acres at 6/22/2021 2118
IR



- Structure
- P Pump
- Water Tank
- Dip Site
- Helispot
-) (Division Break
- Drop Point
- Value at Risk
- Other
- Gate
- Repair Point
- Fence - Cut/Damaged
- Dozer Push
- Culvert
- Mobile Weather Unit
- Repeater
- Water Source
- Repair Status Point
- Repair Needed
- No Repair Needed
- Other - See Comments
- Unknown
- Completed Dozer Line
- Completed Fuel Break
- Completed Hand Line
- Completed Mixed Construction Line
- Planned Dozer Line
- Planned Fuel Break
- Planned Hand Line
- Planned Mixed Construction Line
- Planned Road as Line
- Fence
- Other
- Retardant Drop
- UAS Launch and Recovery Zone
- Fire Edge
- Contained Line
- Repair Status Line
- Completed - Inspected
- Completed - Ready for Inspection
- In Progress
- Repair Needed
- No Repair Needed
- Unknown
- Wildfire Daily Fire Perimeter
- Aerial Fire Retardant Avoidance



Read Contacts:
Katie Bongofsky (Lead) - 406-925-3914
Lenora Dombro - 406-640-2850



NR Team 4
6/25/2021 0530

North American 1983 Datum. Lat/Long Grid



<http://bit.ly/2021RobertsonDraw>