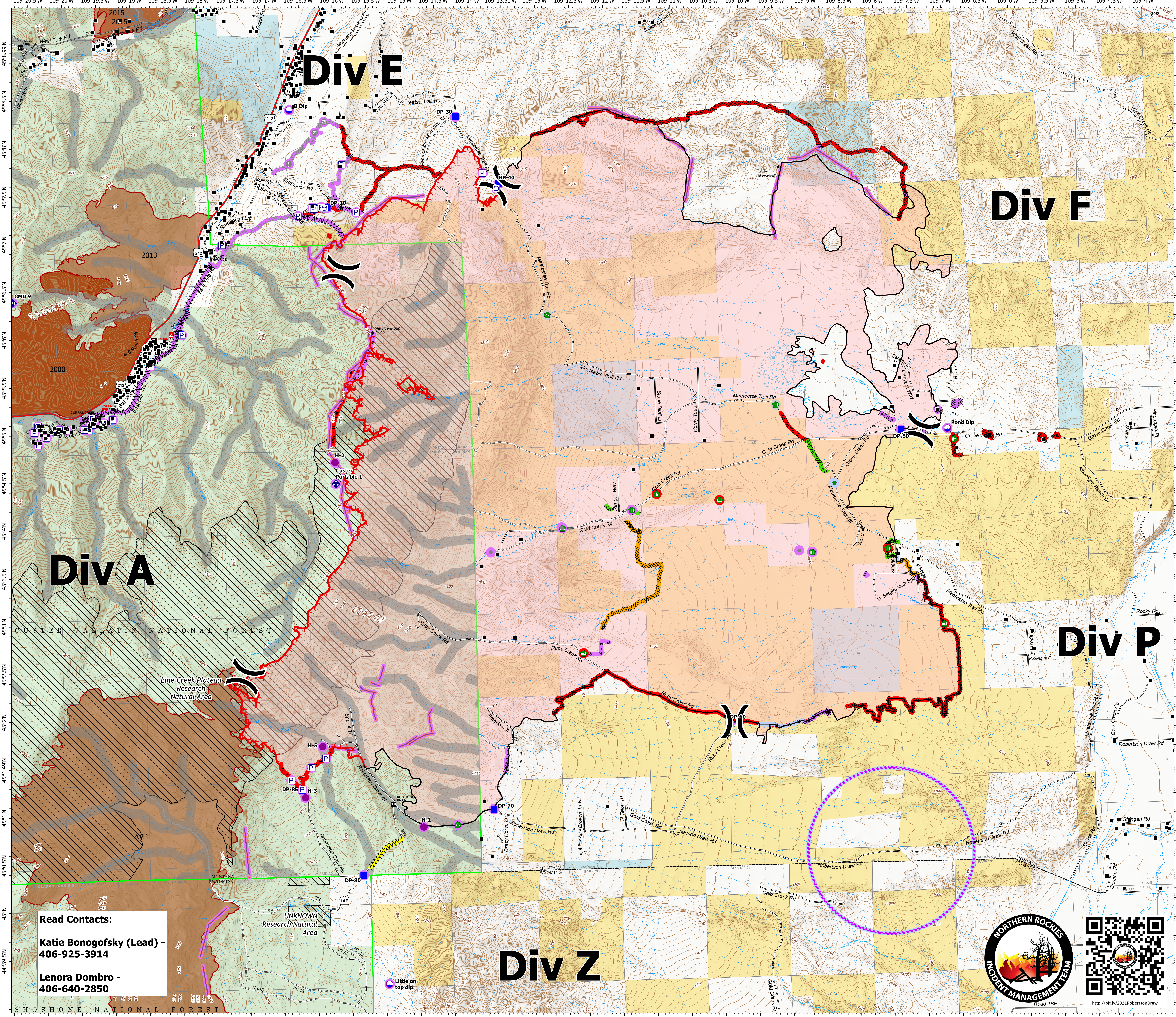
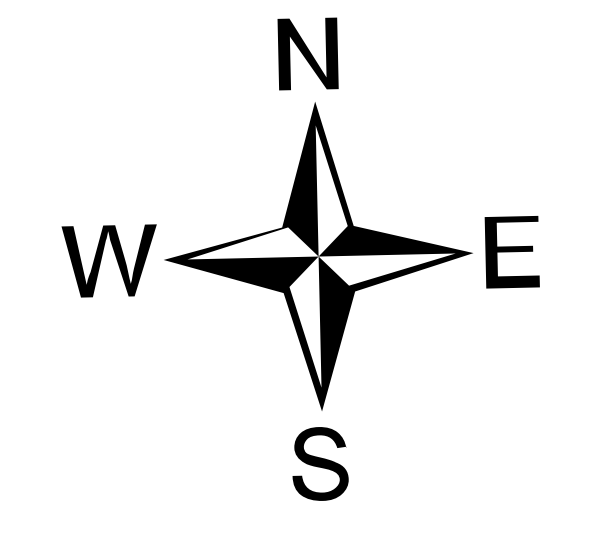


**Supression
Repair**
Robertson Draw
MT CGF - 210148
6/27/2021
29,838 acres at 6/25/2021 0900
IR

- 0 0.25 0.5 1 Mile
- Structure
 - P Pump
 - Water Tank
 - Dip Site
 - Helispot
 -) (Division Break
 - Drop Point
 - Value at Risk
 - Other
 - Gate
 - Repair Point
 - Fence - Cut/Damaged
 - Dozer Push
 - Culvert
 - Mobile Weather Unit
 - Repeater
 - Water Source
- Repair Status Point
- Repair Needed
 - No Repair Needed
 - Other - See Comments
 - Unknown
- Completed Dozer Line
 - Completed Fuel Break
 - Completed Hand Line
 - Completed Mixed Construction Line
 - Planned Dozer Line
 - Planned Hand Line
 - Planned Road as Line
 - Fence
 - Other
 - Retardant Drop
 - UAS Launch and Recovery Zone
 - Fire Edge
 - Contained Line
- Repair Status Line
- Completed - Inspected
 - Completed - Ready for Inspection
 - In Progress
 - Repair Needed
 - No Repair Needed
 - Unknown
 - Wildfire Daily Fire Perimeter
 - AerialFireRetardantAvoidance



Read Contacts:
Katie Bongofsky (Lead) - 406-925-3914
Lenora Dombro - 406-640-2850



NR Team 4
6/27/2021 0437
North American 1983 Datum. Lat/Long Grid



<http://bit.ly/2021RobertsonDraw>