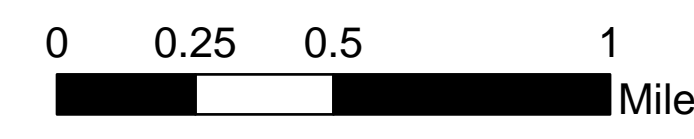
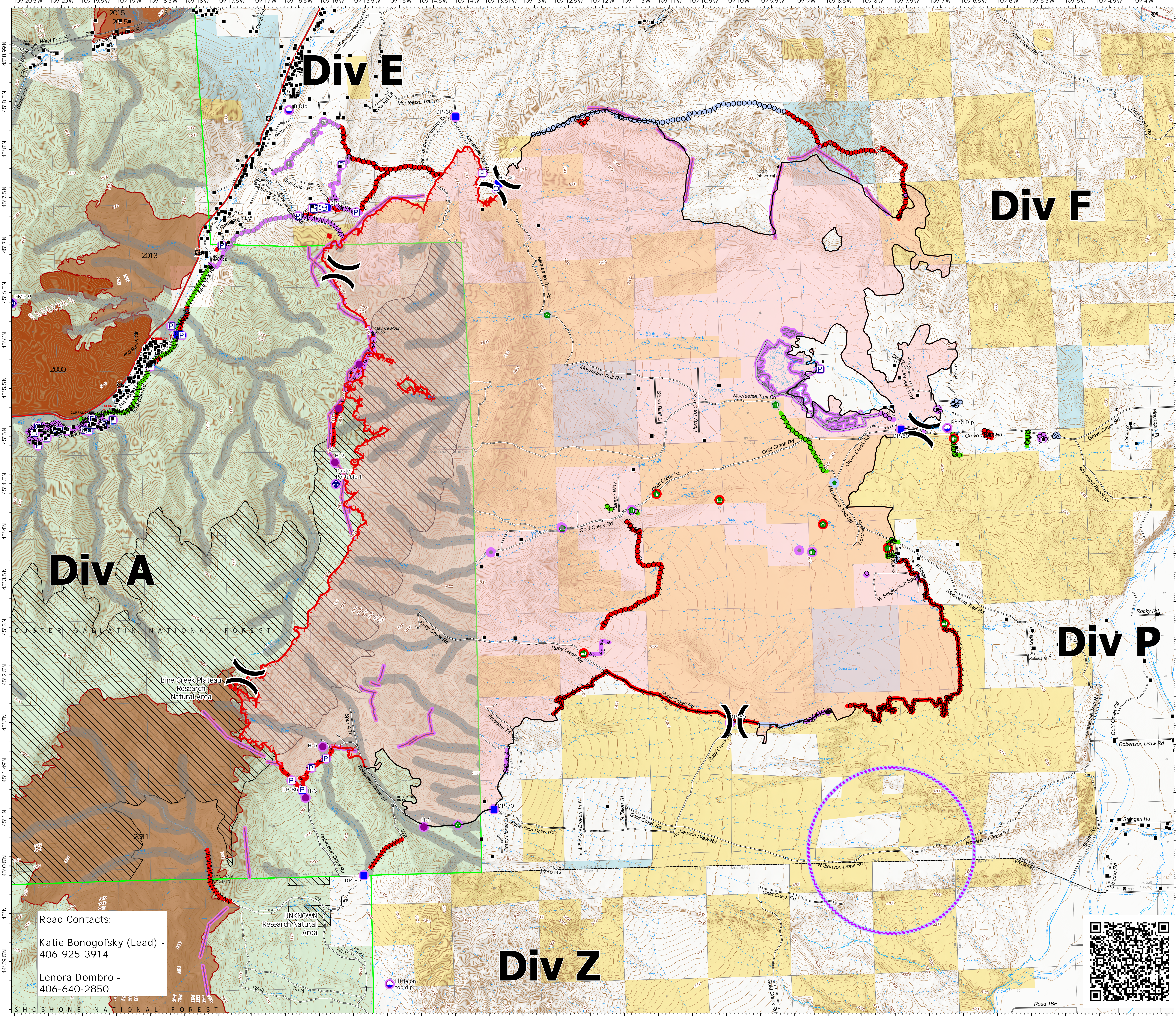


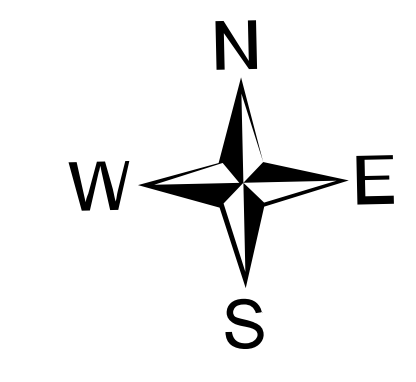
**Suppression  
Repair**  
Robertson Draw  
MT CGF - 210148  
6/30/2021  
29,839 acres at 6/29/2021 2131  
IR



- Structure
- Ⓟ Pump
- Ⓜ Water Tank
- Ⓢ Dip Site
- Helispot
- ⌋ Division Break
- Ⓣ Drop Point
- ⚠ Value at Risk
- ⬢ Other
- Ⓜ Gate
- Ⓢ Repair Point
- Ⓢ Fence - Cut/Damaged
- Ⓢ Dozer Push
- Ⓢ Culvert
- Ⓢ Mobile Weather Unit
- Ⓢ Repeater
- Ⓢ Water Source
- Repair Status Point
- Repair Needed
- No Repair Needed
- Other - See Comments
- Unknown
- Ⓢ Completed Dozer Line
- Ⓢ Completed Fuel Break
- Ⓢ Completed Hand Line
- Ⓢ Completed Mxd Construction Line
- Ⓢ Completed Road as Line
- Ⓢ Planned Dozer Line
- Ⓢ Planned Hand Line
- Ⓢ Planned Road as Line
- Access or Improved Road
- - - Fence
- - - Other
- Repair Line
- - - Retardant Drop
- Ⓢ UAS Launch and Recovery Zone
- Ⓢ Fire Edge
- Contained Line
- Repair Status Line
- Completed - Inspected
- Repair Needed
- No Repair Needed
- Unknown
- Ⓢ Wildfire Daily Fire Perimeter
- Ⓢ Aerial Fire Retardant Avoidance



Read Contacts:  
Katie Bonogofsky (Lead) -  
406-925-3914  
  
Lenora Dombro -  
406-640-2850



6/30/2021 0617  
North American 1983 Datum, Lat/Long Grid

