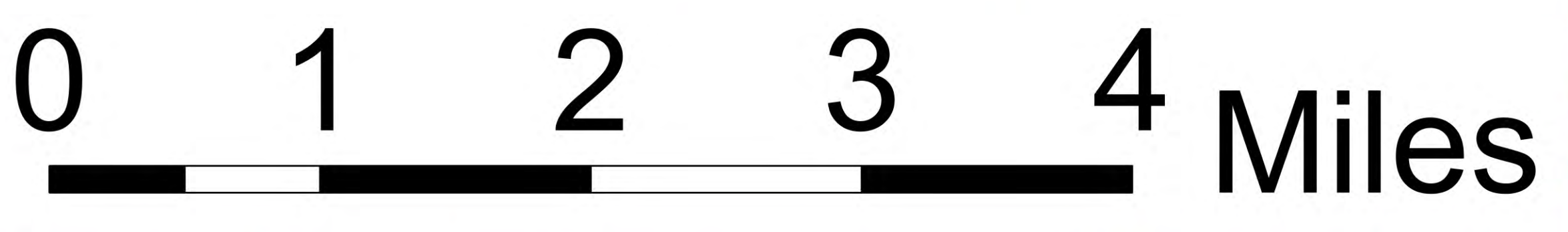
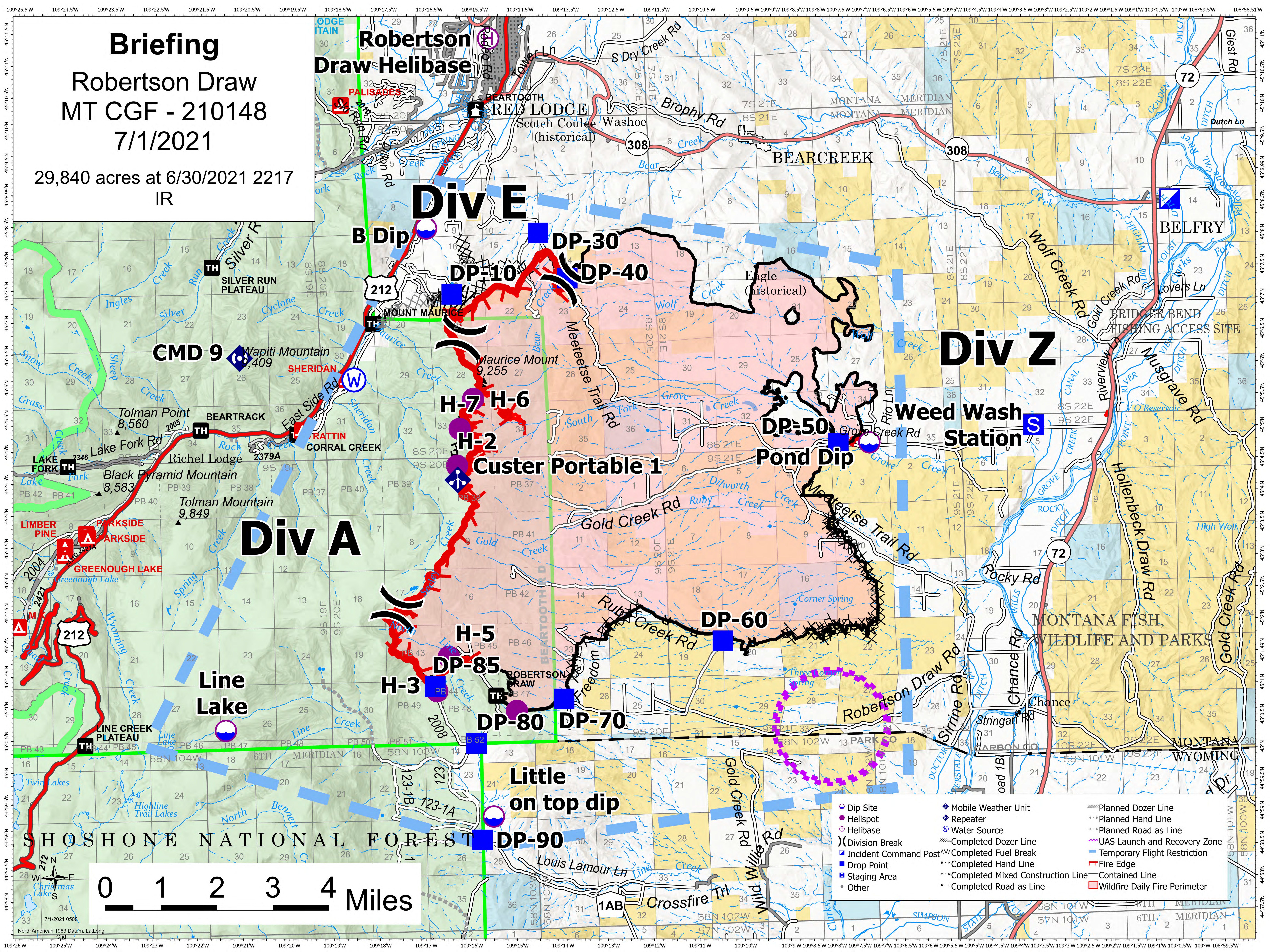


Briefing

Robertson Draw
MT CGF - 210148
7/1/2021

29,840 acres at 6/30/2021 2217
IR



- Dip Site
- Helispot
- Helibase
- ⌋ Division Break
- Incident Command Post
- Drop Point
- Staging Area
- Other
- ◆ Mobile Weather Unit
- ◆ Repeater
- ⊕ Water Source
- ⌘ Completed Dozer Line
- ⌘ Completed Fuel Break
- ⌘ Completed Hand Line
- ⌘ Completed Mixed Construction Line
- ⌘ Completed Road as Line
- ⌘ Planned Dozer Line
- ⌘ Planned Hand Line
- ⌘ Planned Road as Line
- ⌘ UAS Launch and Recovery Zone
- ⌘ Temporary Flight Restriction
- ⌘ Fire Edge
- ⌘ Contained Line
- ⌘ Wildfire Daily Fire Perimeter