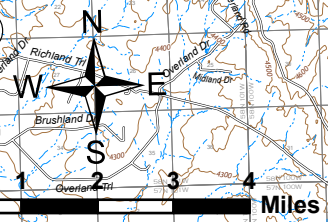
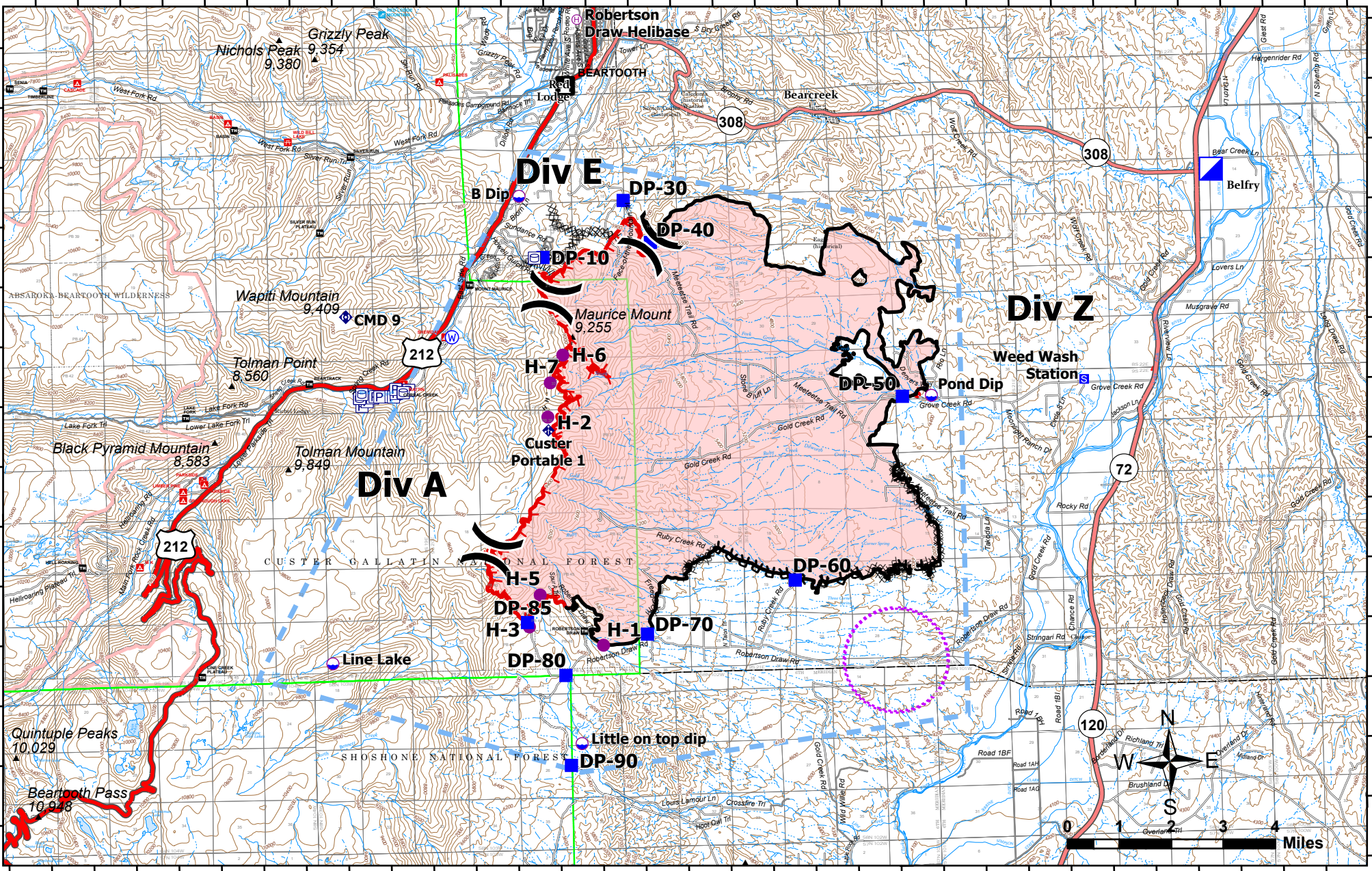


109°28'W 109°26'W 109°24'W 109°22'W 109°20'W 109°18'W 109°16'W 109°14'W 109°12'W 109°10'W 109°8'W 109°6.01'W 109°4'W 109°2'W 109°W 108°58'W

45°10'N
45°8'N
45°6'N
45°4'N
45°2'N
45°N
44°58'N



IAP
Robertson Draw
MT CGF - 210148
7/1/2021
IR acres from 06/29/2021 at 2131
29,839 acres

- | | | | | | |
|----------------|-----------------------|-----------------------------------|------------------------------|------------------------|------------------------|
| Pump | Incident Command Post | Water Source | Planned Dozer Line | Contained Line | State Primary Route |
| Water Tank | Drop Point | Completed Dozer Line | Planned Hand Line | Campground | State Secondary Route |
| Dip Site | Staging Area | Completed Fuel Break | Planned Road as Line | Trailhead | Paved Roads |
| Helispot | Other | Completed Hand Line | UAS Launch and Recovery Zone | Picnic Site | Dirt (Not Paved) |
| Helibase | Mobile Weather Unit | Completed Mixed Construction Line | Temporary Flight Restriction | Group Picnic Site | Proclaimed FS Boundary |
| Division Break | Repeater | Completed Road as Line | Fire Edge | FS Wilderness Boundary | |

