


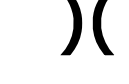


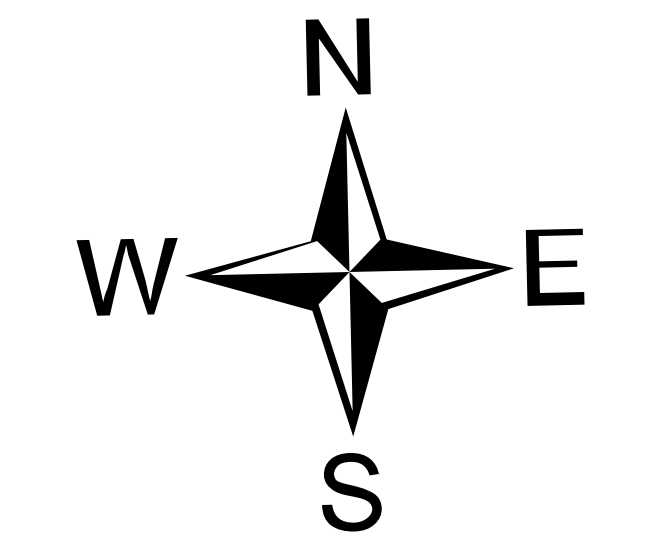
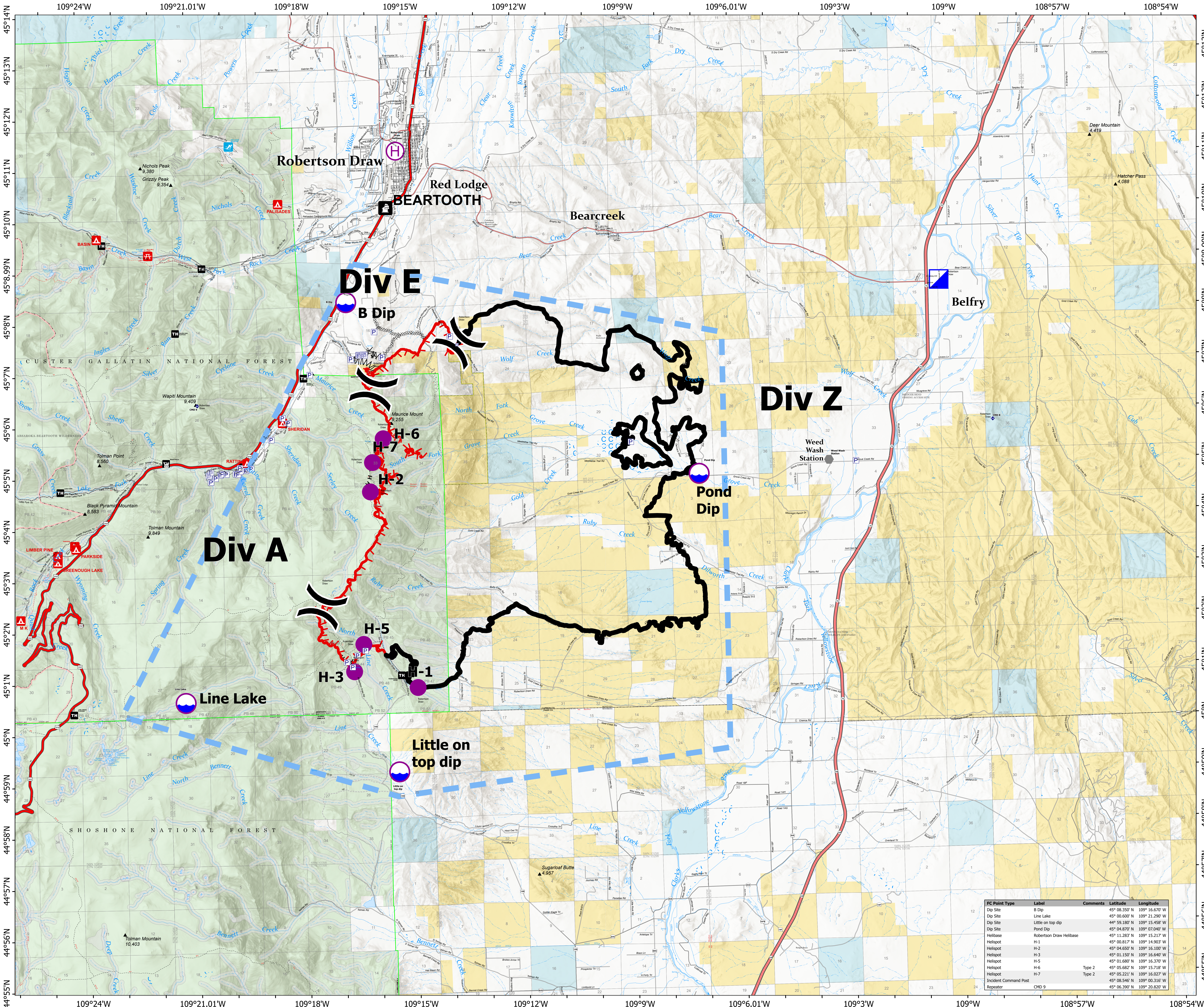
# Air Operations

Robertson Draw  
MT CGF - 210148  
7/2/2021

29,841 acres at 7/1/2021 2206  
IR

TFR Number: 1/0096  
Altitude: SFC to 16,000 feet

-  Dip Site
-  Helispot
-  Helibase
-  Division Break



0 1/2 1 1 1/2 2 Miles



FC Point Type	Label	Comments	Latitude	Longitude
Dip Site	B Dip		45° 08.350' N	109° 16.670' W
Dip Site	Line Lake		45° 06.600' N	109° 21.290' W
Dip Site	Little on top dip		44° 59.180' N	109° 15.450' W
Dip Site	Pond Dip		45° 04.870' N	109° 07.040' W
Helibase	Robertson Draw Helibase		45° 11.283' N	109° 15.217' W
Helispot	H-1		45° 00.817' N	109° 14.903' W
Helispot	H-2		45° 04.650' N	109° 16.100' W
Helispot	H-3		45° 01.150' N	109° 16.640' W
Helispot	H-5		45° 01.580' N	109° 16.370' W
Helispot	H-6	Type 2	45° 05.682' N	109° 15.718' W
Helispot	H-7	Type 2	45° 05.221' N	109° 16.027' W
Incident Command Post			45° 08.546' N	109° 00.316' W
Repeater	CHD 9		45° 06.390' N	109° 20.820' W