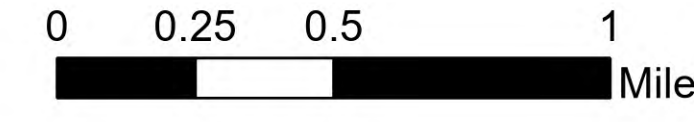


Suppression

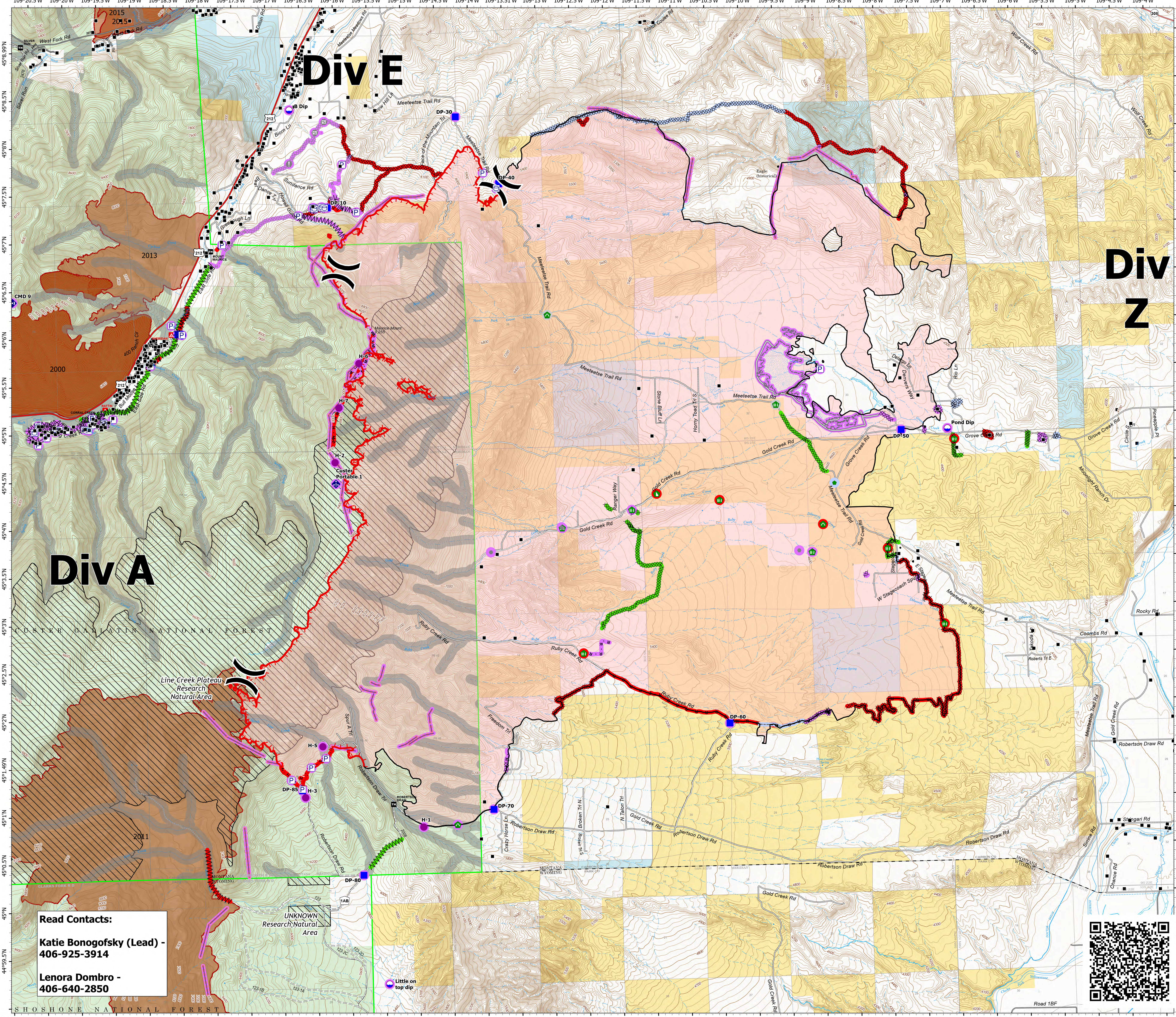
Repair

Robertson Draw
MT CGF - 210148

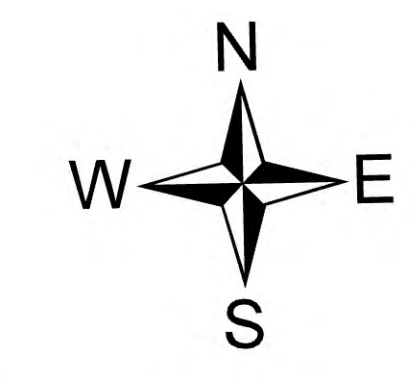
7/2/2021
29,841 acres at 7/1/2021 2206
IR



- Structure
 - Pump
 - Water Tank
 - Dip Site
 - Helispot
 - Division Break
 - Drop Point
 - Value at Risk
 - Other
 - Gate
 - Repair Point
 - Fence - Cut/Damaged
 - Dozer Push
 - Culvert
 - Mobile Weather Unit
 - Repeater
 - Water Source
- Repair Status Point
- Repair Needed
 - No Repair Needed
 - Other - See Comments
 - Unknown
- Repair Status Line
- Completed Dozer Line
 - Completed Fuel Break
 - Completed Hand Line
 - Completed Mixed Construction Line
 - Planned Dozer Line
 - Planned Hand Line
 - Planned Road as Line
 - Access or Improved Road
 - Fence
 - Other
 - Repair Line
 - Retardant Drop
 - Fire Edge
 - Contained Line
- Repair Status Line
- Completed - Inspected
 - Repair Needed
 - No Repair Needed
 - Unknown
- Wildfire Daily Fire Perimeter
 - Aerial Fire Retardant Avoidance



Read Contacts:
Katie Bongofsky (Lead) - 406-925-3914
Lenora Dombro - 406-640-2850



7/2/2021 0548
North American 1983 Datum, Lat/Long Grid

