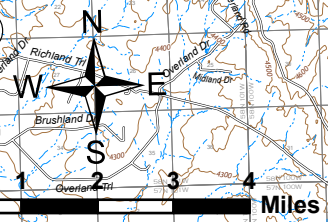
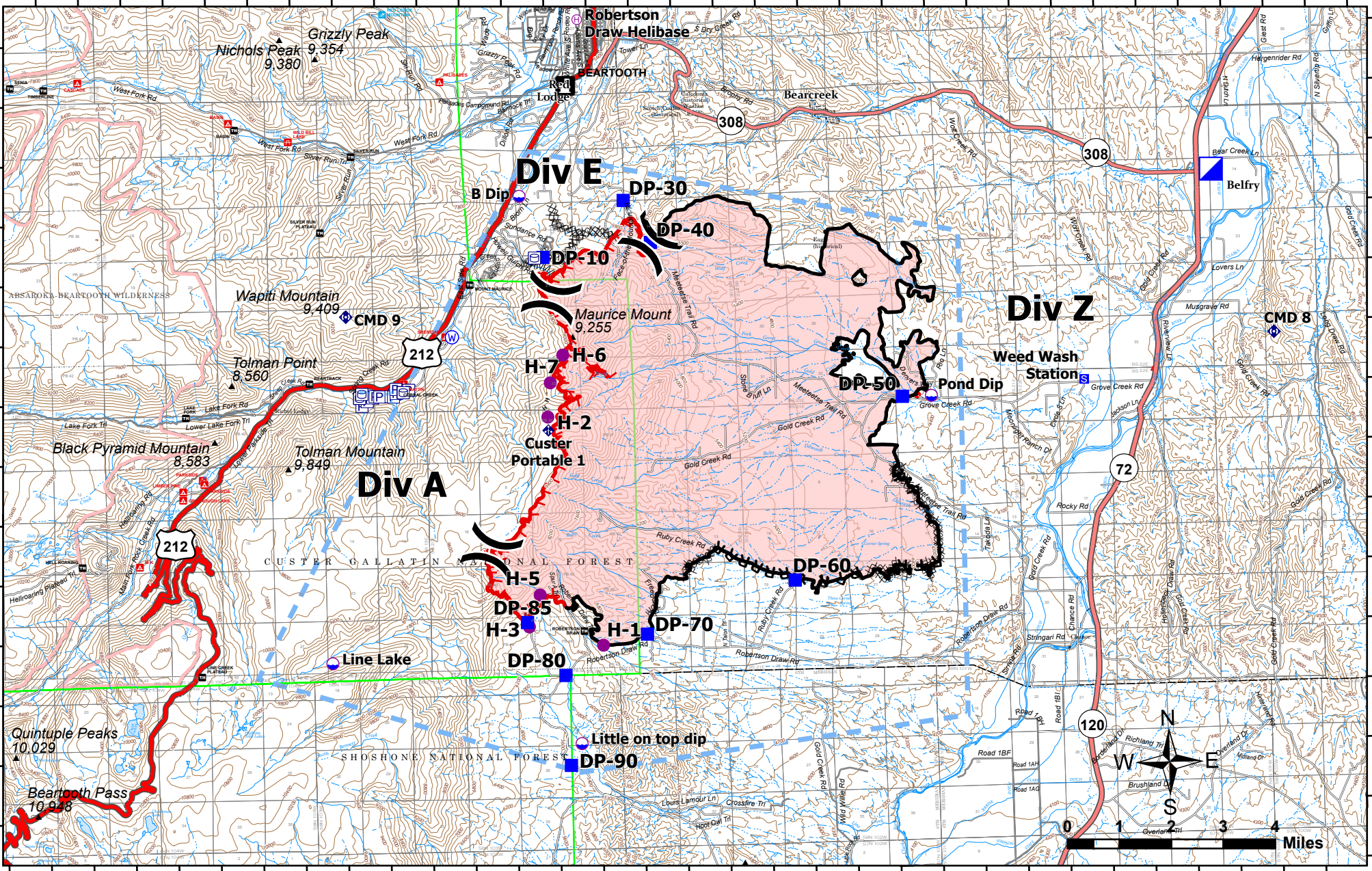


109°28'W 109°26'W 109°24'W 109°22'W 109°20'W 109°18'W 109°16'W 109°14'W 109°12'W 109°10'W 109°8'W 109°6.01'W 109°4'W 109°2'W 109°0'W 108°58'W

45°10'N  
45°8'N  
45°6'N  
45°4'N  
45°2'N  
45°N  
44°58'N



**IAP**  
**Robertson Draw**  
**MT CGF - 210148**  
**7/2/2021**  
**IR acres from 06/29/2021 at 2131**  
**29,840 acres**

- |                |                       |                                   |                              |                   |                        |
|----------------|-----------------------|-----------------------------------|------------------------------|-------------------|------------------------|
| Pump           | Incident Command Post | Water Source                      | Planned Dozer Line           | Campground        | State Primary Route    |
| Water Tank     | Drop Point            | Completed Dozer Line              | Planned Hand Line            | Trailhead         | State Secondary Route  |
| Dip Site       | Staging Area          | Completed Fuel Break              | Completed Hand Line          | Picnic Site       | Paved Roads            |
| Helispot       | Other                 | Completed Hand Line               | Planned Road as Line         | Group Picnic Site | Dirt (Not Paved)       |
| Helibase       | Mobile Weather Unit   | Completed Mixed Construction Line | Temporary Flight Restriction | Ski Area Alpine   | Proclaimed FS Boundary |
| Division Break | Repeater              | Completed Road as Line            | Fire Edge                    | US Primary Route  | FS Wilderness Boundary |
|                |                       |                                   | Contained Line               |                   |                        |

