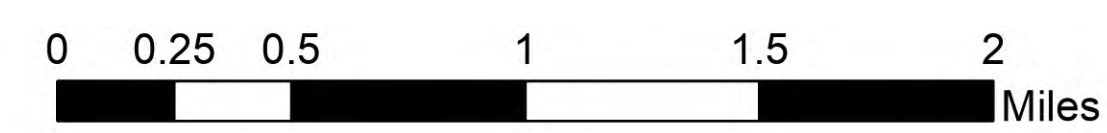


# Operations

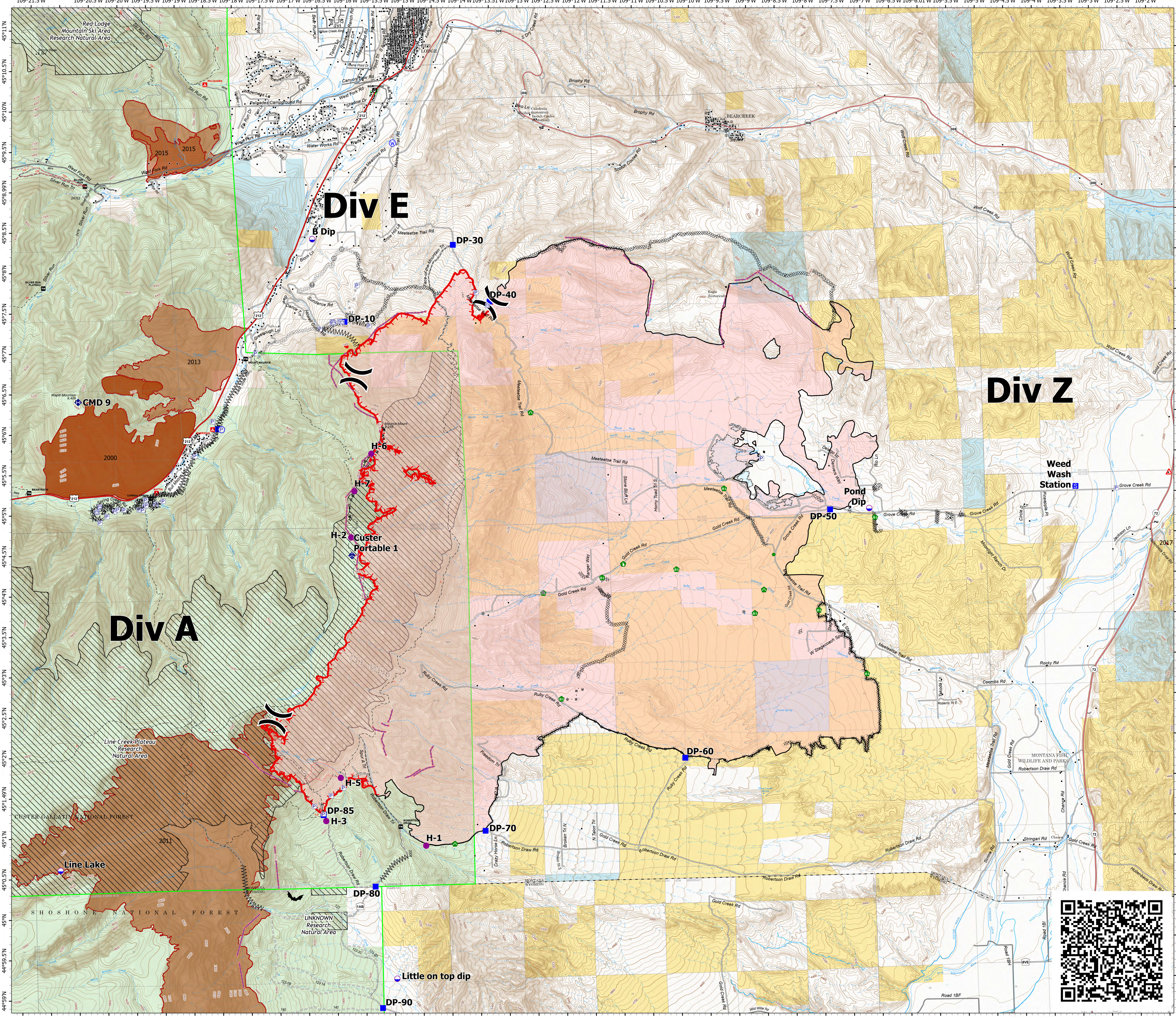
Robertson Draw  
MT CGF - 210148

7/3/2021

29,841 acres at 7/2/2021 2242  
IR



- Structure
- Pump
- Water Tank
- Dip Site
- Helibase
- Division Break
- Drop Point
- Staging Area
- Value at Risk
- Other
- Gate
- Repair Point
- Fence - Cut/Damaged
- Dozer Push
- Culvert
- Mobile Weather Unit
- Repeater
- Water Source
- Completed Dozer Line
- Completed Fuel Break
- H - H Completed Hand Line
- M - M Completed Mixed Construction Line
- R - R Completed Road as Line
- Planned Dozer Line
- H - H Planned Hand Line
- R - R Planned Road as Line
- Access or Improved Road
- Fence
- Other
- Repair Line
- Retardant Drop
- Fire Edge
- Contained Line
- Wildfire Daily Fire Perimeter
- IR Scattered Heat
- Fire History 2000 - Present
- Research Natural Area
- US Primary Route
- State Primary Route
- State Secondary Route
- Paved
- Gravel Road
- Dirt Road
- Unimproved Road
- Forest Service Roads Closed
- Paved Roads
- Dirt (Not Paved)
- Forest Service Land
- State Public Lands
- Other State Lands
- Bureau of Land Management Lands
- NIFC Historic Fire Perimeters 2010-2016



7/3/2021 0424  
North American 1983 Datum, Lat/Long Grid

