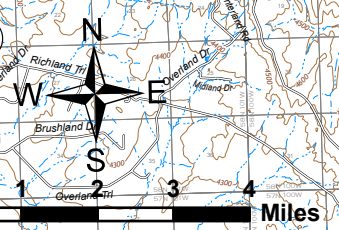
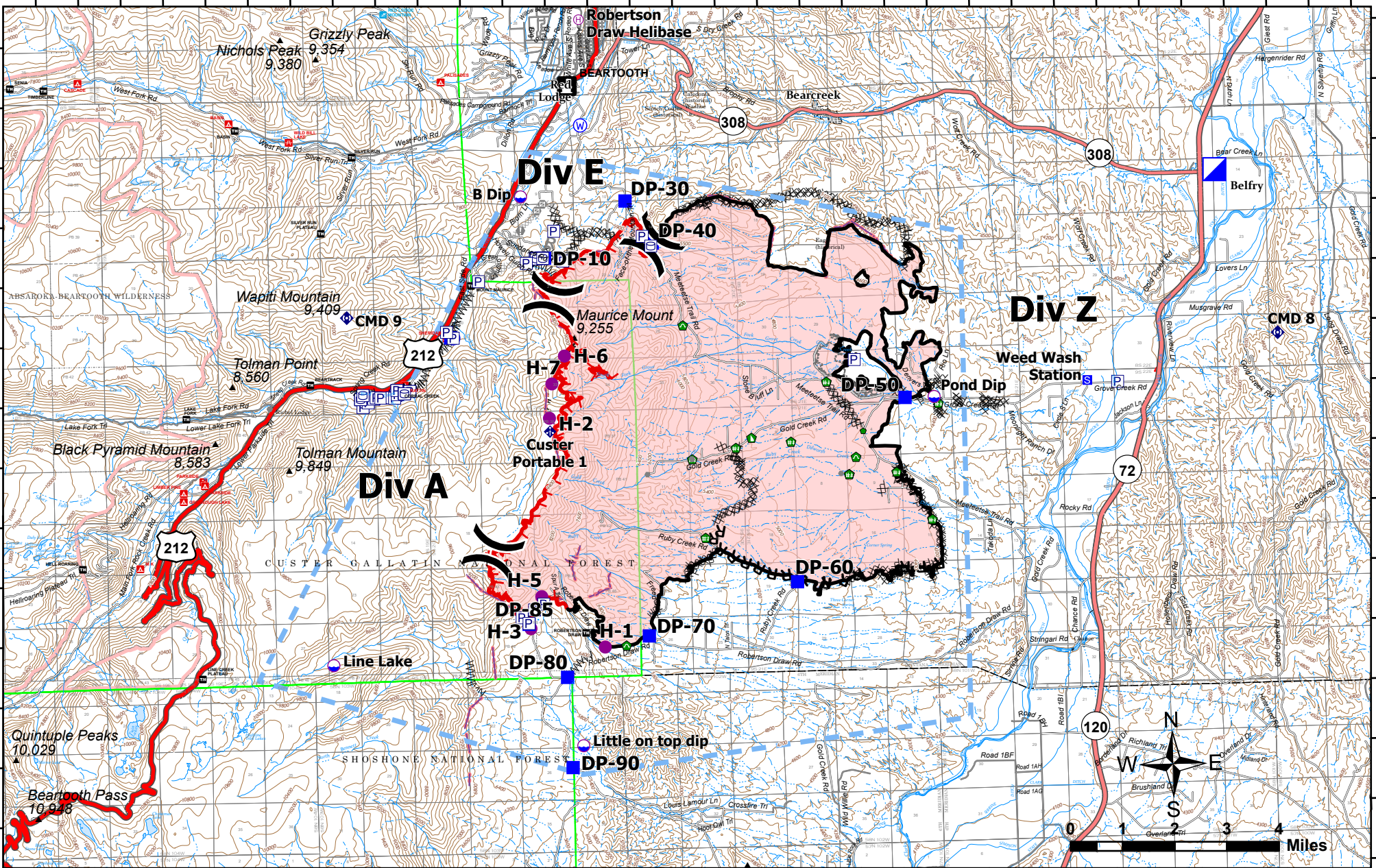


109°28'W 109°26'W 109°24'W 109°22'W 109°20'W 109°18'W 109°16'W 109°14'W 109°12'W 109°10'W 109°8'W 109°6.01'W 109°4'W 109°2'W 109°0'W 108°58'W

45°10'N
45°8'N
45°6'N
45°4'N
45°2'N
45°N
44°58'N



IAP
Robertson Draw
MT CGF - 210148
7/3/2021
IR acres from 06/29/2021 at 2131
29,841 acres

Pump	Drop Point	Dozer Push	Completed Hand Line	Fence	Campground
Water Tank	Staging Area	Culvert	Completed Mixed Construction Line	Other	Trailhead
Dip Site	Value at Risk	Mobile Weather Unit	Completed Road as Line	Repair Line	Picnic Site
Helispot	Other	Repeater	Planned Dozer Line	Retardant Drop	Group Picnic Site
Helibase	Gate	Water Source	Planned Hand Line	Temporary Flight Restriction	Ski Area Alpine
Division Break	Repair Point	Completed Dozer Line	Planned Road as Line	Fire Edge	US Primary Route
Incident Command Post	Fence - Cut/Damaged	Completed Fuel Break	Access or Improved Road	Contained Line	State Primary Route

