

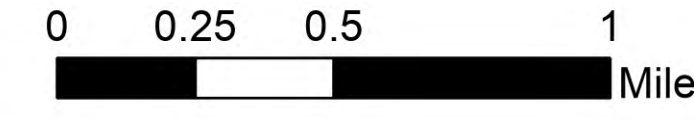
# Suppression

## Repair

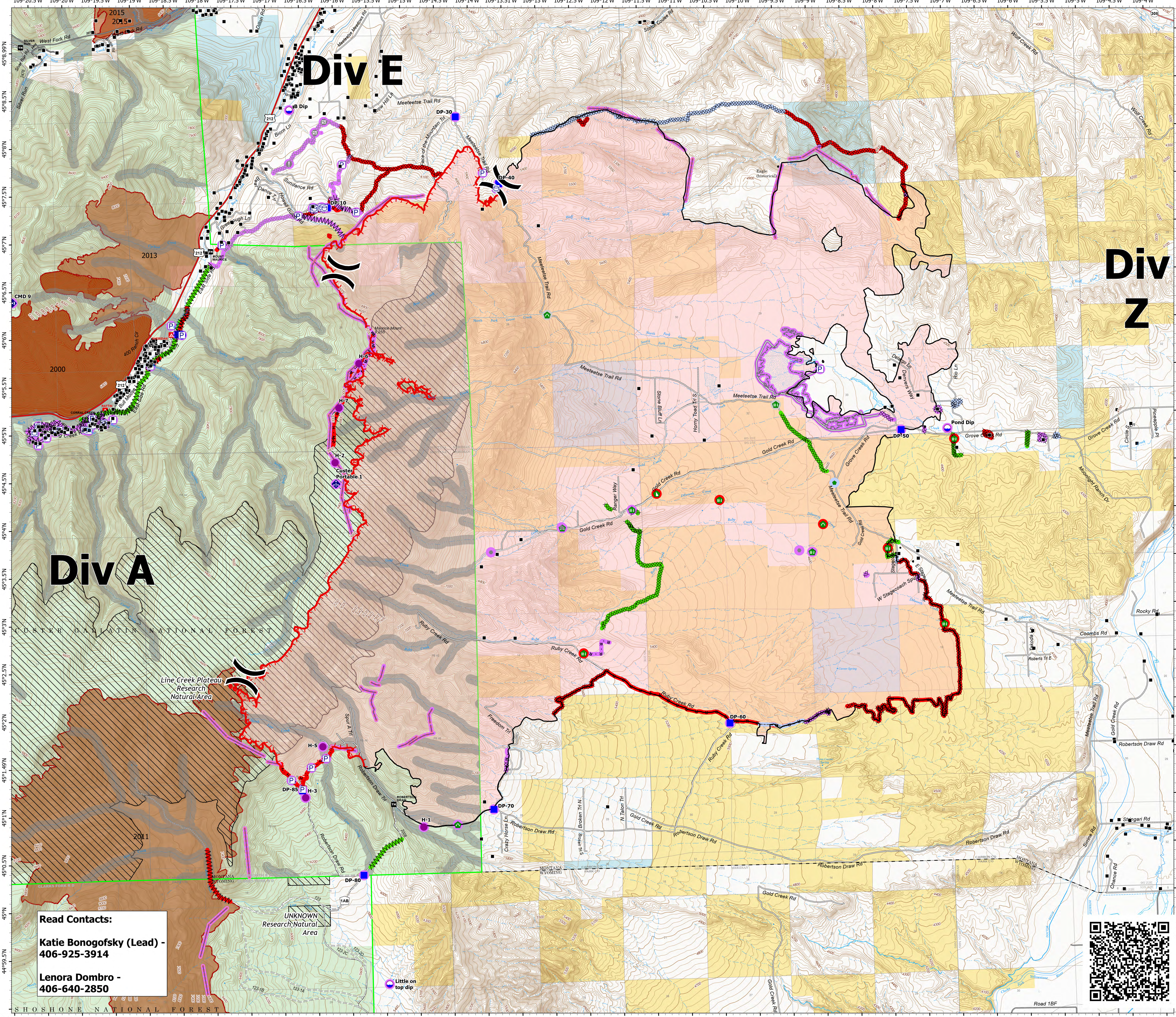
Robertson Draw  
MT CGF - 210148

7/4/2021

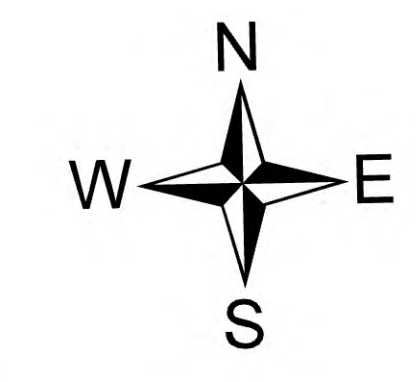
29,841 acres at 7/2/2021 2242  
IR



- Structure
  - Pump
  - Water Tank
  - Dip Site
  - Helispot
  - Division Break
  - Drop Point
  - Value at Risk
  - Other
  - Gate
  - Repair Point
  - Fence - Cut/Damaged
  - Dozer Push
  - Culvert
  - Mobile Weather Unit
  - Repeater
  - Water Source
- Repair Status Point
- Repair Needed
  - No Repair Needed
  - Other - See Comments
  - Unknown
- Repair Status Line
- Completed Dozer Line
  - Completed Fuel Break
  - Completed Hand Line
  - Completed Mixed Construction Line
  - Planned Dozer Line
  - Planned Hand Line
  - Planned Road as Line
  - Access or Improved Road
  - Fence
  - Other
  - Repair Line
  - Retardant Drop
  - Fire Edge
  - Contained Line
- Repair Status Line
- Completed - Inspected
  - Repair Needed
  - No Repair Needed
  - Unknown
- Wildfire Daily Fire Perimeter
  - Aerial Fire Retardant Avoidance



**Read Contacts:**  
**Katie Bongofsky (Lead) - 406-925-3914**  
**Lenora Dombro - 406-640-2850**



7/4/2021 0514  
North American 1983 Datum, Lat/Long Grid

