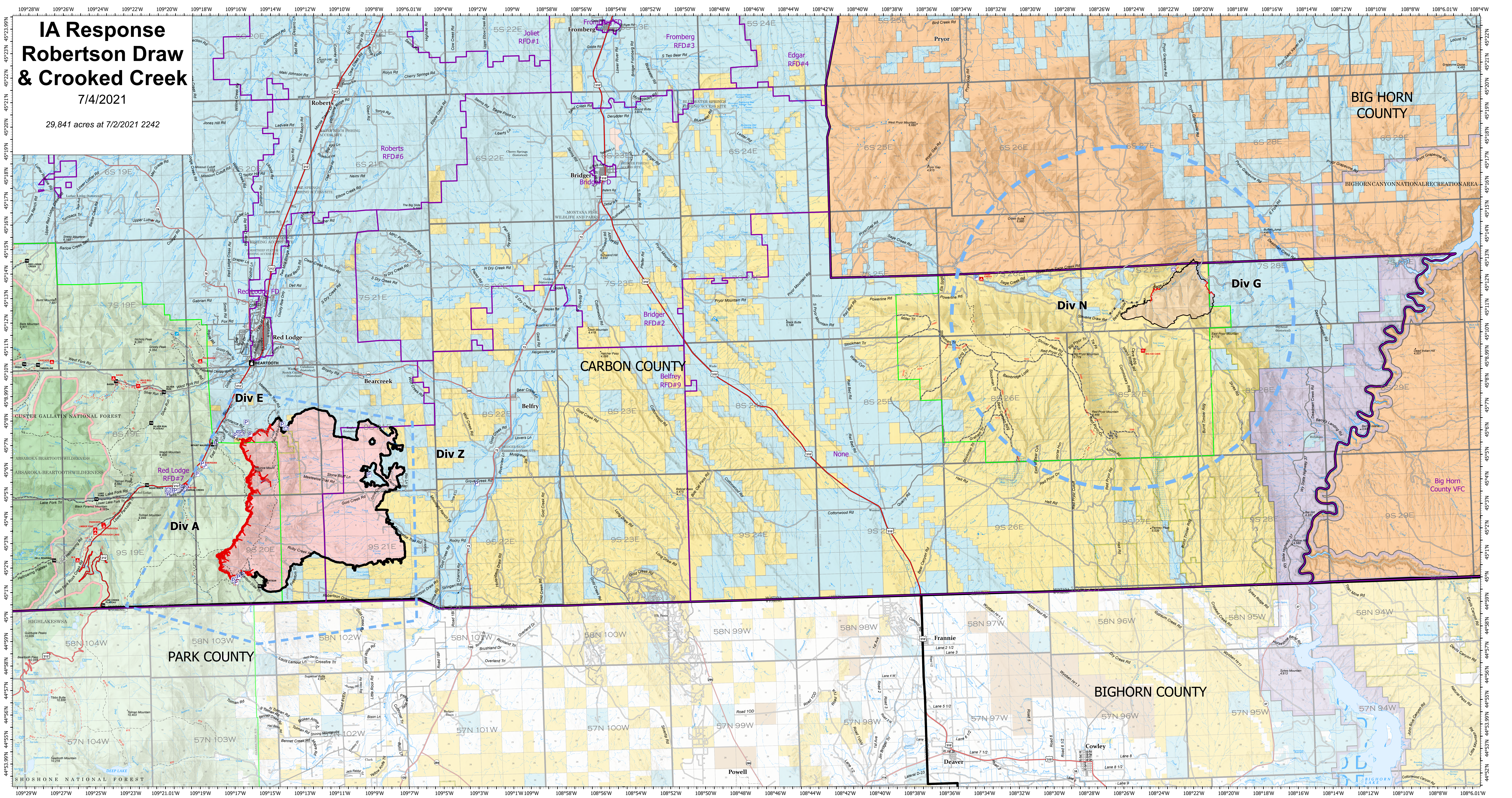


IA Response Robertson Draw & Crooked Creek

7/4/2021

29,841 acres at 7/2/2021 2242



- | | |
|---|---|
| <p>Fire Protection - Responsible Agency (Montana Only)</p> <ul style="list-style-type: none"> BIA BLM County and Local NPS State USFS USFWS | <p>Ownership (Wyoming)</p> <ul style="list-style-type: none"> State Public Lands U.S. Fish & Wildlife Service Lands Bureau of Land Management Lands National Park Service Lands Other Federal Lands Private; Local Government; Undesignated Forest Service Land |
|---|---|

