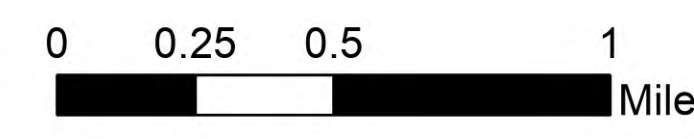
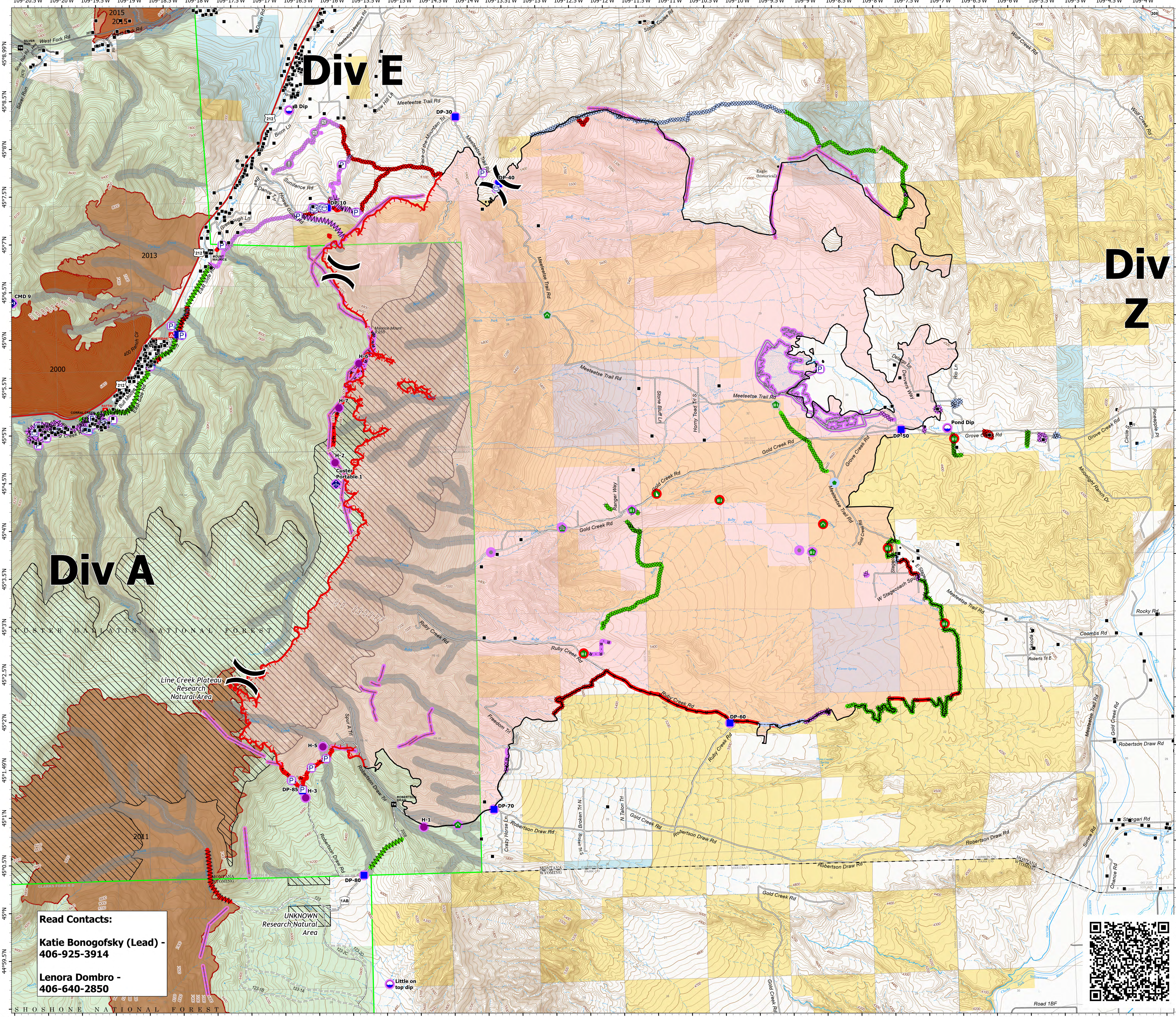


Suppression Repair

Robertson Draw
MT CGF - 210148
7/5/2021
29,841 acres at 7/2/2021 2242
IR



- Structure
- Ⓟ Pump
- Ⓜ Water Tank
- Ⓛ Dip Site
- Ⓢ Helispot
- Ⓜ Division Break
- Ⓛ Drop Point
- Ⓢ Value at Risk
- Ⓢ Other
- Ⓜ Gate
- Ⓢ Repair Point
- Ⓢ Fence - Cut/Damaged
- Ⓢ Dozer Push
- Ⓢ Culvert
- Ⓢ Mobile Weather Unit
- Ⓢ Repeater
- Ⓢ Water Source
- Repair Status Point
- Repair Needed
- No Repair Needed
- Other - See Comments
- Unknown
- Ⓢ Completed Dozer Line
- Ⓢ Completed Fuel Break
- Ⓢ Completed Hand Line
- Ⓢ Completed Mixed Construction Line
- Ⓢ Planned Dozer Line
- Ⓢ Planned Hand Line
- Ⓢ Planned Road as Line
- Ⓢ Access or Improved Road
- Ⓢ Fence
- Ⓢ Other
- Ⓢ Repair Line
- Ⓢ Retardant Drop
- Ⓢ Fire Edge
- Ⓢ Contained Line
- Repair Status Line
- Completed - Inspected
- Repair Needed
- No Repair Needed
- Unknown
- Ⓢ Wildfire Daily Fire Perimeter
- Ⓢ Aerial Fire Retardant Avoidance



Read Contacts:
Katie Bongofsky (Lead) - 406-925-3914
Lenora Dombro - 406-640-2850

