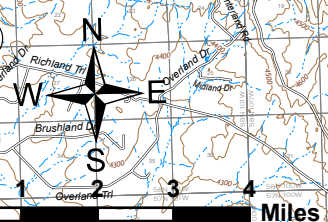
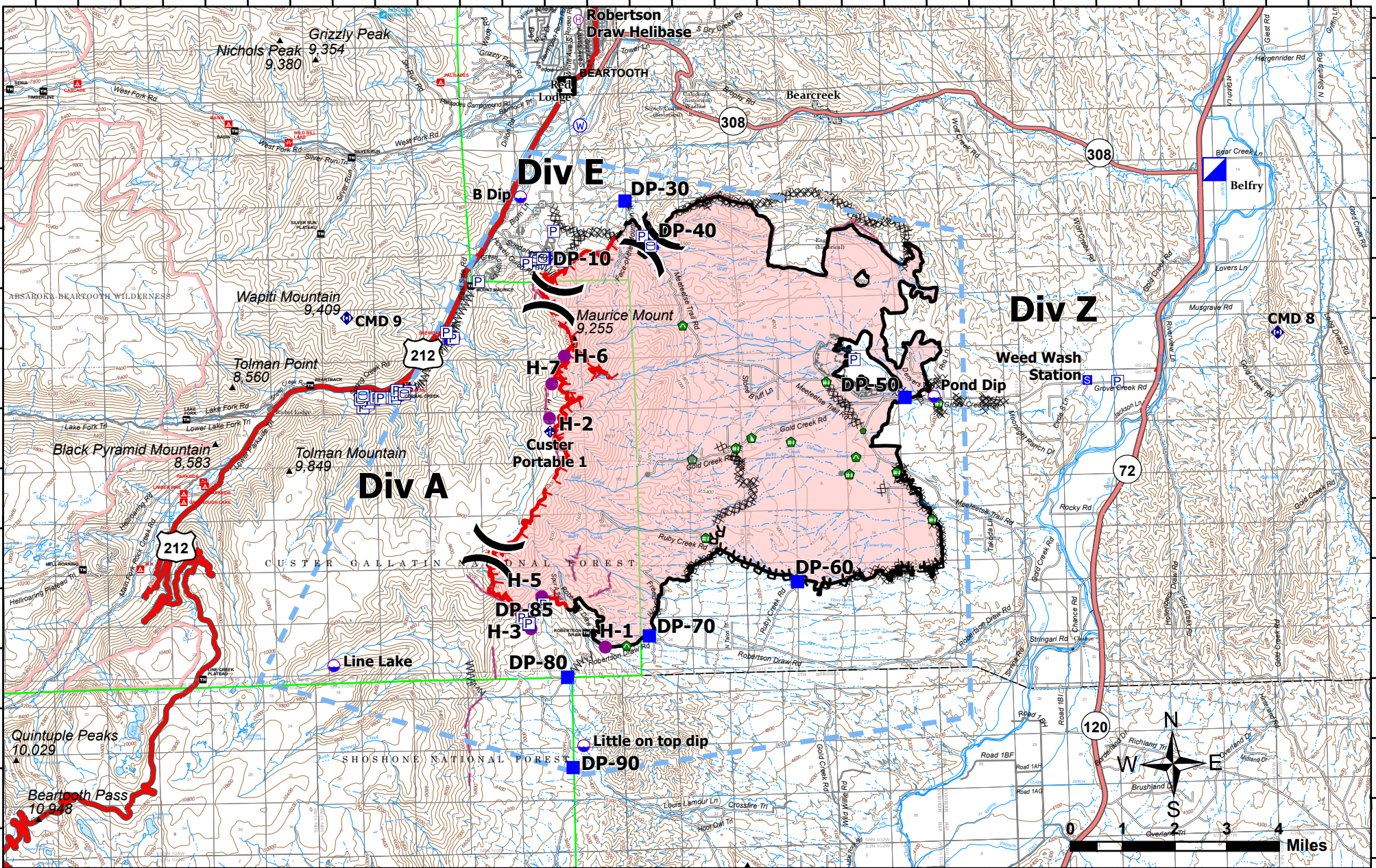


109°28'W 109°26'W 109°24'W 109°22'W 109°20'W 109°18'W 109°16'W 109°14'W 109°12'W 109°10'W 109°8'W 109°6.01'W 109°4'W 109°2'W 109°0'W 108°58'W

45°10'N
45°8'N
45°6'N
45°4'N
45°2'N
45°N
44°58'N



IAP
Robertson Draw
MT CGF - 210148
7/1/2025
IR acres from 07/2/2021 at 2242
29,841 acres

Pump	Drop Point	Dozer Push	Completed Hand Line	Fence	Campground	State Secondary Route
Water Tank	Staging Area	Culvert	Completed Mixed Construction Line	Other	Trailhead	Paved Roads
Dip Site	Value at Risk	Mobile Weather Unit	Completed Road as Line	Repair Line	Picnic Site	Dirt (Not Paved)
Helispot	Other	Repeater	Planned Dozer Line	Retardant Drop	Group Picnic Site	Proclaimed FS Boundary
Helibase	Gate	Water Source	Planned Hand Line	Temporary Flight Restriction	Ski Area Alpine	FS Wilderness Boundary
Division Break	Repair Point	Completed Dozer Line	Planned Road as Line	Fire Edge	US Primary Route	
Incident Command Post	Fence - Cut/Damaged	Completed Fuel Break	Access or Improved Road	Contained Line	State Primary Route	

