

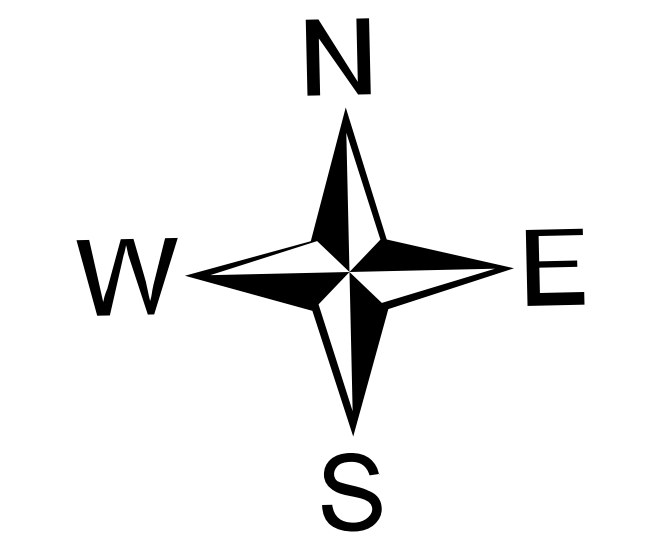
Air Operations

Robertson Draw MT CGF - 210148 7/6/2021

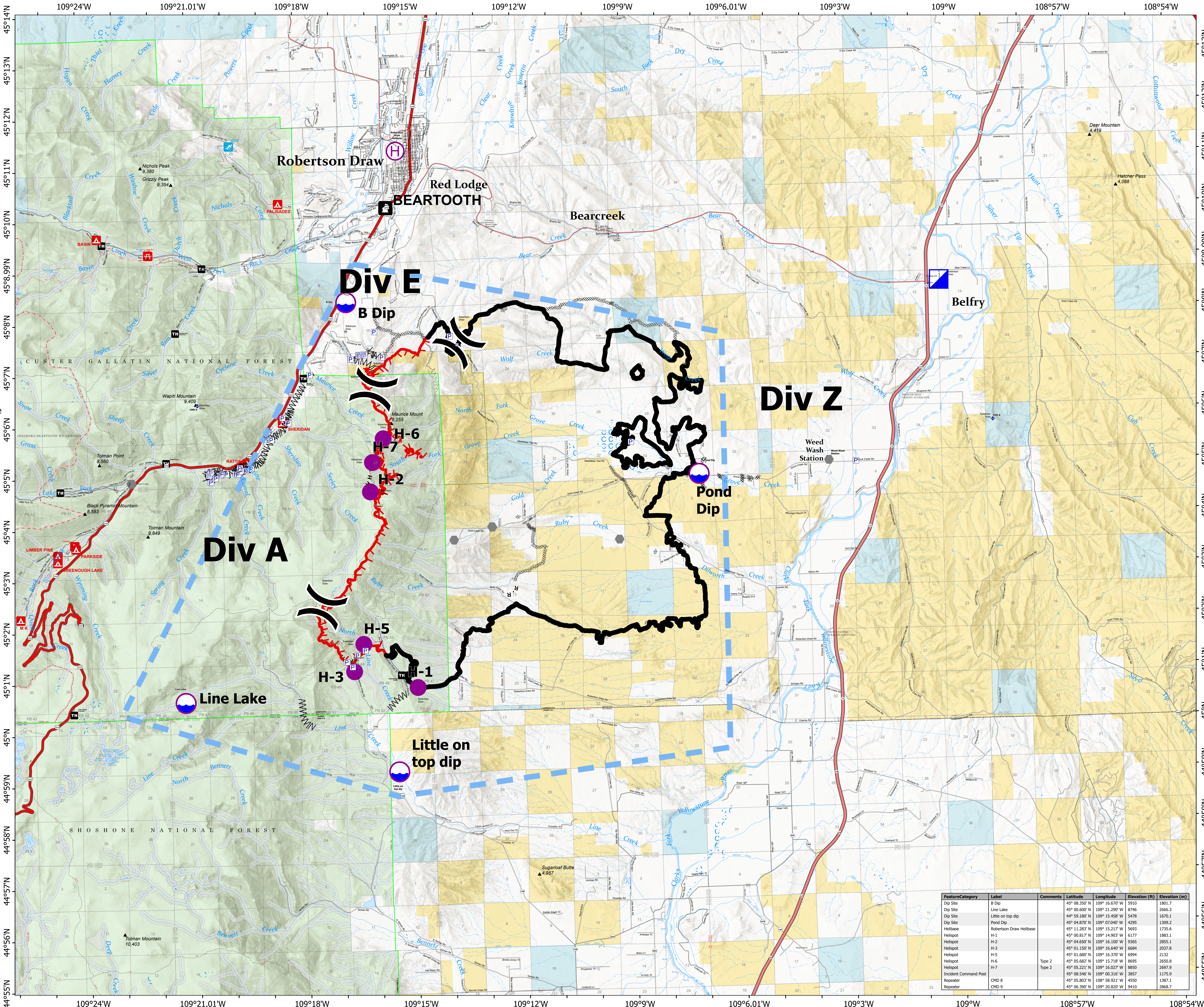
29,841 acres at 7/5/2021 2204
IR

TFR Number: 1/0096
Altitude: SFC to 16,000 feet

- Dip Site
- Helispot
- Helibase
- Division Break
- Incident Command Post
- Value at Risk
- Other
- Repeater
- Completed Dozer Line
- Completed Fuel Break
- Completed Hand Line
- Completed Mixed Construction Line
- Completed Road as Line
- Temporary Flight Restriction
- Fire Edge
- Contained Line



0 1/2 1 1 1/2 2
Miles



FeatureCategory	Label	Comments	Latitude	Longitude	Elevation (ft)	Elevation (m)
Dip Site	B Dip		45° 08.350' N	109° 16.670' W	5910	1801.7
Dip Site	Line Lake		45° 00.600' N	109° 21.290' W	8746	2666.3
Dip Site	Little on top dip		44° 59.180' N	109° 15.458' W	5478	1670.1
Dip Site	Pond Dip		45° 04.870' N	109° 07.940' W	4295	1309.2
Helibase	Robertson Draw Helibase		45° 11.283' N	109° 15.217' W	5693	1735.6
Helispot	H-1		45° 00.817' N	109° 14.903' W	6177	1883.1
Helispot	H-2		45° 04.650' N	109° 16.100' W	9365	2855.1
Helispot	H-3		45° 01.150' N	109° 16.640' W	6684	2037.8
Helispot	H-5		45° 01.680' N	109° 16.370' W	6994	2132
Helispot	H-6		45° 05.682' N	109° 15.718' W	8695	2650.8
Helispot	H-7	Type 2	45° 05.221' N	109° 16.027' W	8850	2697.9
Incident Command Post			45° 08.546' N	109° 00.316' W	3857	1175.9
Repeater	CHD 8		45° 05.803' N	108° 58.921' W	4550	1387.1
Repeater	CHD 9		45° 06.390' N	109° 20.820' W	9410	2868.7