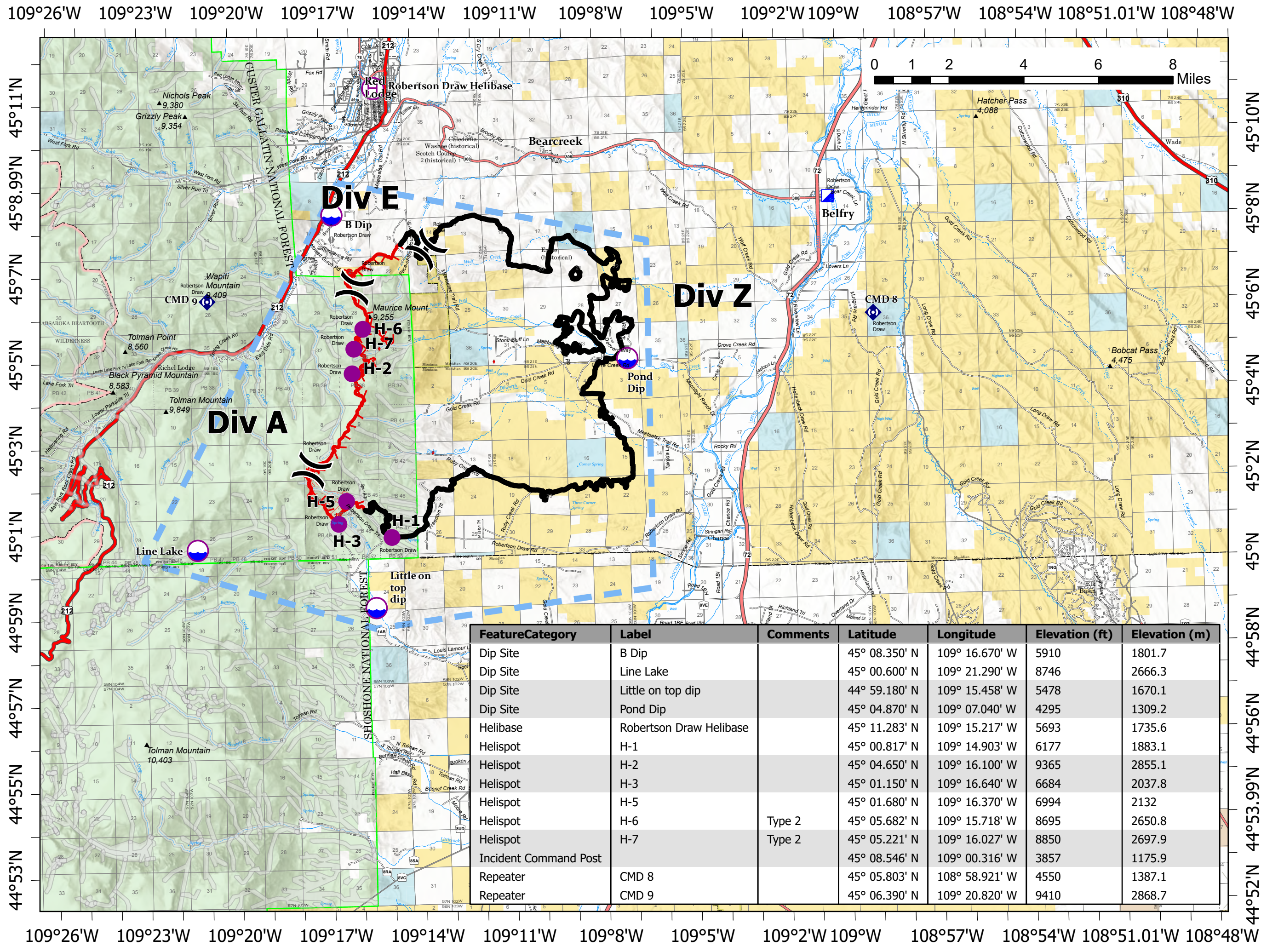
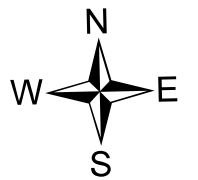


**Pilot**  
 Robertson Draw  
 MT CGF - 210148  
 7/6/2021  
 29,841 acres  
 at 7/5/2021 2204  
 IR

TFR Number: 1/0096  
 Altitude: SFC to 16,000 feet

-  Dip Site
-  Helispot
-  Helibase
-  Division Break
-  Incident Command Post
-  Value at Risk
-  Repeater
-  Temporary Flight Restriction
-  Fire Edge
-  Contained Line
-  IR Intense Heat
-  IR Scattered Heat



Feature	Category	Label	Comments	Latitude	Longitude	Elevation (ft)	Elevation (m)
Dip Site		B Dip		45° 08.350' N	109° 16.670' W	5910	1801.7
Dip Site		Line Lake		45° 00.600' N	109° 21.290' W	8746	2666.3
Dip Site		Little on top dip		44° 59.180' N	109° 15.458' W	5478	1670.1
Dip Site		Pond Dip		45° 04.870' N	109° 07.040' W	4295	1309.2
Helibase		Robertson Draw Helibase		45° 11.283' N	109° 15.217' W	5693	1735.6
Helispot		H-1		45° 00.817' N	109° 14.903' W	6177	1883.1
Helispot		H-2		45° 04.650' N	109° 16.100' W	9365	2855.1
Helispot		H-3		45° 01.150' N	109° 16.640' W	6684	2037.8
Helispot		H-5		45° 01.680' N	109° 16.370' W	6994	2132
Helispot		H-6	Type 2	45° 05.682' N	109° 15.718' W	8695	2650.8
Helispot		H-7	Type 2	45° 05.221' N	109° 16.027' W	8850	2697.9
Incident Command Post				45° 08.546' N	109° 00.316' W	3857	1175.9
Repeater		CMD 8		45° 05.803' N	108° 58.921' W	4550	1387.1
Repeater		CMD 9		45° 06.390' N	109° 20.820' W	9410	2868.7