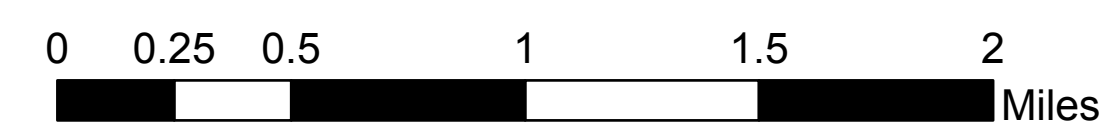


Operations

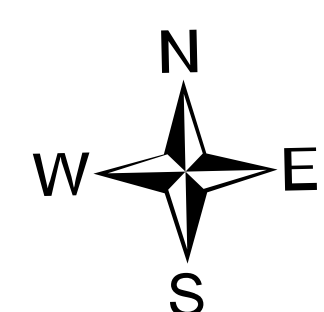
Robertson Draw
MT CGF - 210148

7/7 - 7/9/2021

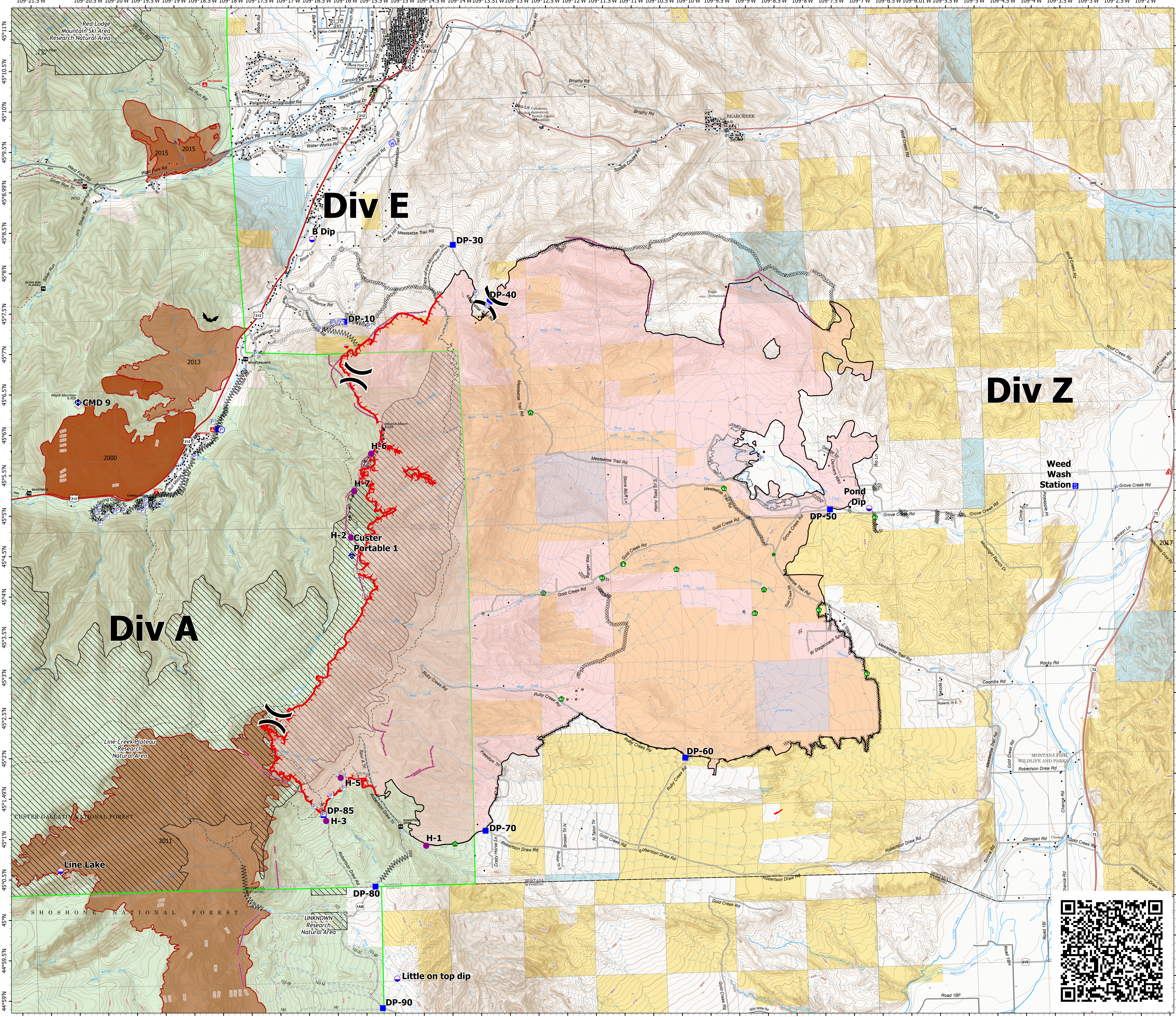
29,841 acres at 7/2/2021 2242
IR



- Structure
- Pump
- Water Tank
- Dip Site
- Helispot
- Helibase
- Division Break
- Drop Point
- Staging Area
- Value at Risk
- Other
- Gate
- Repair Point
- Fence - Cut/Damaged
- Dozer Push
- Culvert
- Mobile Weather Unit
- Repeater
- Water Source
- Completed Dozer Line
- Completed Fuel Break
- Completed Hand Line
- Completed Mixed Construction Line
- Planned Dozer Line
- Planned Hand Line
- Planned Road as Line
- Access or Improved Road
- Fence
- Other
- Repair Line
- Retardant Drop
- Fire Edge
- Contained Line
- Wildfire Daily Fire Perimeter
- Fire History 2000 - Present
- Research Natural Area
- US Primary Route
- State Primary Route
- State Secondary Route
- Paved
- Gravel Road
- Dirt Road
- Unimproved Road
- Forest Service Roads Closed
- Paved Roads
- Dirt (Not Paved)
- Forest Service Land
- State Public Lands
- Other State Lands
- Bureau of Land Management Lands
- NIFCHistoricFirePerimeters20102016



7/6/2021 0814
North American 1983 Datum, Lat/Long Grid



Div Z

Div E

Div A

Weed Wash Station

Pond Dip

Line Lake

Little on top dip

