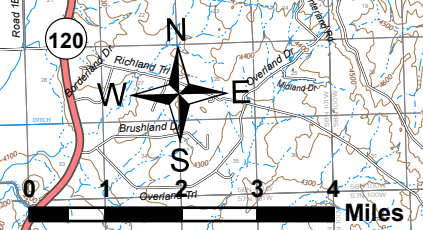
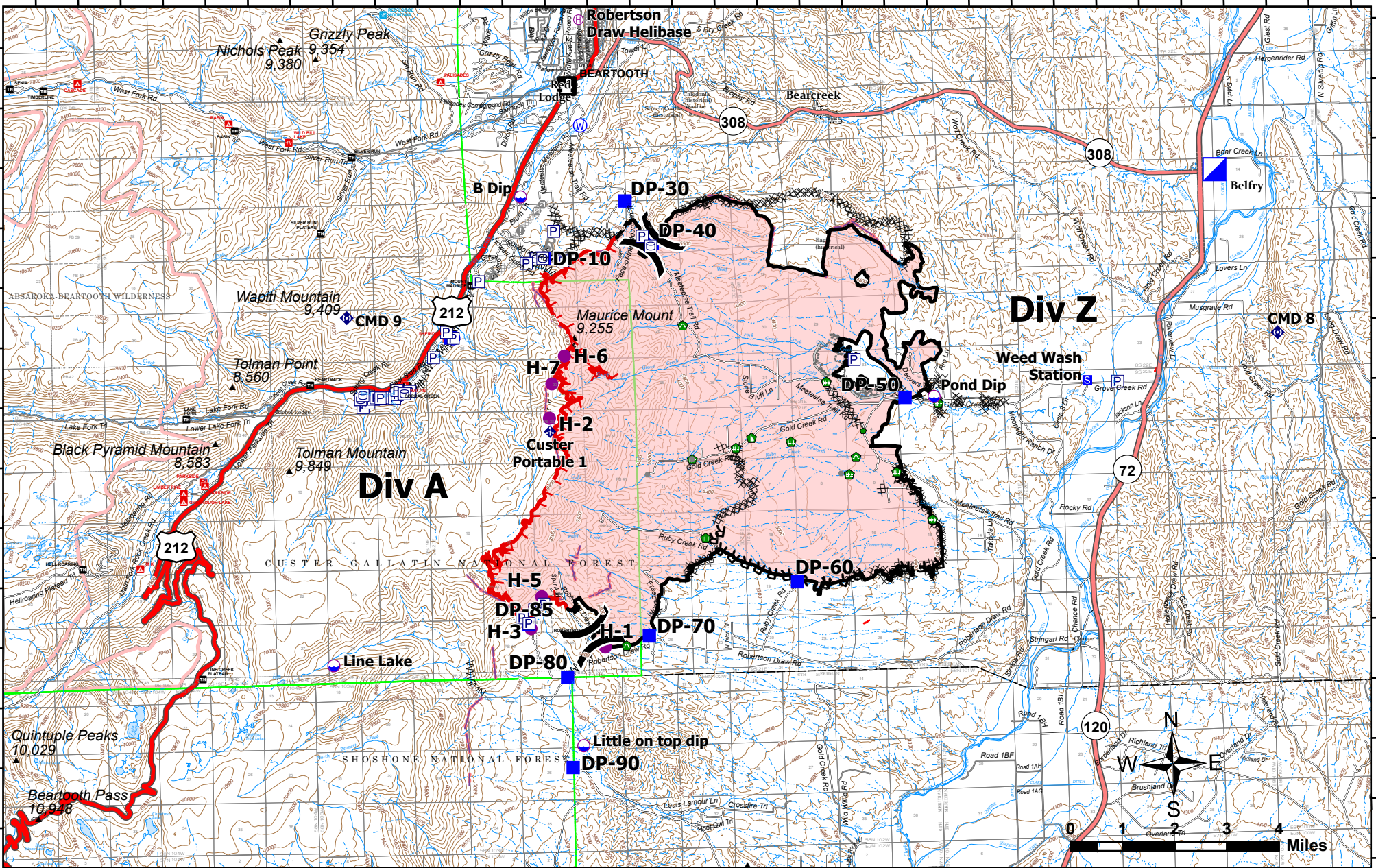


109°28'W 109°26'W 109°24'W 109°22'W 109°20'W 109°18'W 109°16'W 109°14'W 109°12'W 109°10'W 109°8'W 109°6.01'W 109°4'W 109°2'W 109°0'W 108°58'W

45°10'N
45°8'N
45°6'N
45°4'N
45°2'N
45°N
44°58'N



IAP
Robertson Draw
MT CGF - 210148
7/7-7/9 2021
IR acres from 07/5/2021 at 2204
29,841 acres

Pump	Drop Point	Fence - Cut/Damaged	Completed Fuel Break	Planned Road as Line	Fire Edge	US Primary Route
Water Tank	Staging Area	Dozer Push	Completed Hand Line	Access or Improved Road	Contained Line	State Primary Route
Dip Site	Value at Risk	Culvert	Completed Mixed Construction Line	Fence	Campground	State Secondary Route
Helispot	Other	Mobile Weather Unit	Completed Road as Line	Other	Trailhead	Paved Roads
Helibase	Gate	Repeater	Planned Dozer Line	Repair Line	Picnic Site	Dirt (Not Paved)
Division Break	Repair Point	Water Source	Planned Hand Line	Retardant Drop	Group Picnic Site	Proclaimed FS Boundary
Incident Command Post	Completed Dozer Line				FS Wilderness Boundary	Ski Area Alpine

