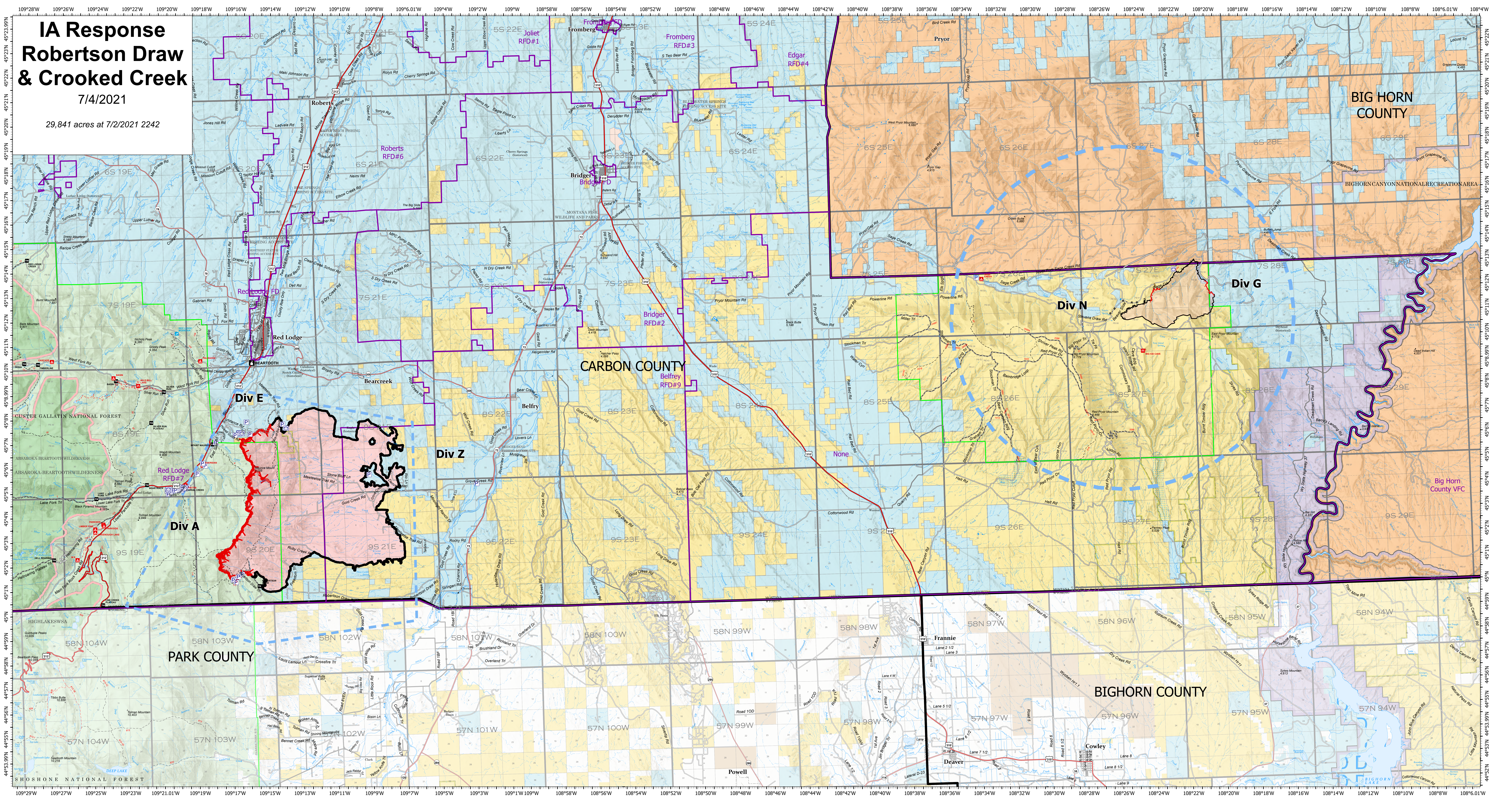


# IA Response Robertson Draw & Crooked Creek

7/4/2021

29,841 acres at 7/2/2021 2242



- |   |   |
|---|---|
| <p><b>Fire Protection - Responsible Agency (Montana Only)</b></p> <ul style="list-style-type: none"> <li><span style="display: inline-block; width: 10px; height: 10px; background-color: orange; border: 1px solid black; margin-right: 5px;"></span> BIA</li> <li><span style="display: inline-block; width: 10px; height: 10px; background-color: yellow; border: 1px solid black; margin-right: 5px;"></span> BLM</li> <li><span style="display: inline-block; width: 10px; height: 10px; background-color: lightblue; border: 1px solid black; margin-right: 5px;"></span> County and Local</li> <li><span style="display: inline-block; width: 10px; height: 10px; background-color: lightpurple; border: 1px solid black; margin-right: 5px;"></span> NPS</li> <li><span style="display: inline-block; width: 10px; height: 10px; background-color: lightgreen; border: 1px solid black; margin-right: 5px;"></span> State</li> <li><span style="display: inline-block; width: 10px; height: 10px; background-color: lightyellow; border: 1px solid black; margin-right: 5px;"></span> USFS</li> <li><span style="display: inline-block; width: 10px; height: 10px; background-color: lightpink; border: 1px solid black; margin-right: 5px;"></span> USFWS</li> </ul> | <p><b>Ownership (Wyoming)</b></p> <ul style="list-style-type: none"> <li><span style="display: inline-block; width: 10px; height: 10px; background-color: lightblue; border: 1px solid black; margin-right: 5px;"></span> State Public Lands</li> <li><span style="display: inline-block; width: 10px; height: 10px; background-color: lightgreen; border: 1px solid black; margin-right: 5px;"></span> U.S. Fish &amp; Wildlife Service Lands</li> <li><span style="display: inline-block; width: 10px; height: 10px; background-color: yellow; border: 1px solid black; margin-right: 5px;"></span> Bureau of Land Management Lands</li> <li><span style="display: inline-block; width: 10px; height: 10px; background-color: lightpurple; border: 1px solid black; margin-right: 5px;"></span> National Park Service Lands</li> <li><span style="display: inline-block; width: 10px; height: 10px; background-color: lightyellow; border: 1px solid black; margin-right: 5px;"></span> Other Federal Lands</li> <li><span style="display: inline-block; width: 10px; height: 10px; background-color: lightpink; border: 1px solid black; margin-right: 5px;"></span> Private; Local Government; Undesignated</li> <li><span style="display: inline-block; width: 10px; height: 10px; background-color: lightgreen; border: 1px solid black; margin-right: 5px;"></span> Forest Service Land</li> </ul> |
|---|---|

