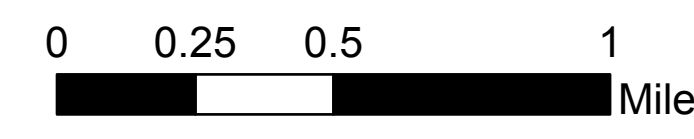
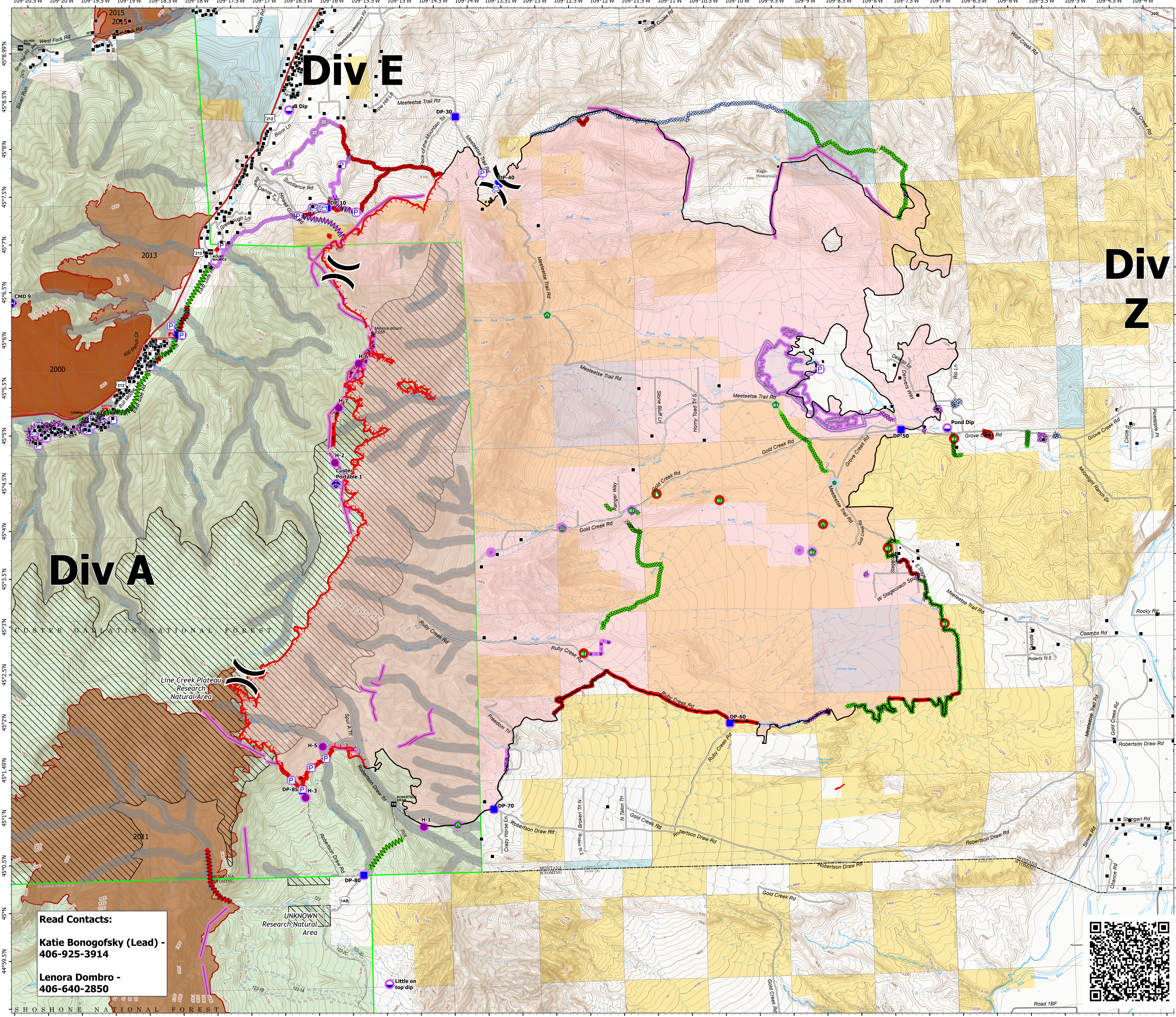


# Suppression Repair

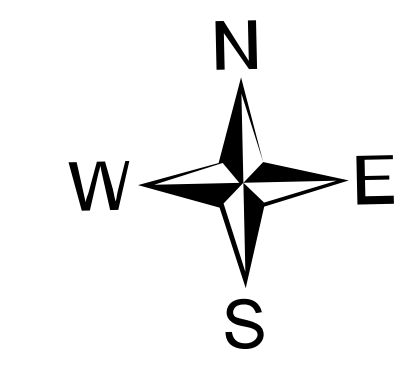
Robertson Draw  
MT CGF - 210148  
7/6/2021  
29,841 acres at 7/2/2021 2242  
IR



- Structure
- Ⓟ Pump
- Ⓜ Water Tank
- Ⓛ Dip Site
- Ⓢ Helispot
- Ⓜ Division Break
- Ⓛ Drop Point
- Ⓢ Value at Risk
- Ⓢ Other
- Ⓜ Gate
- Ⓢ Repair Point
- Ⓢ Fence - Cut/Damaged
- Ⓢ Dozer Push
- Ⓢ Culvert
- Ⓢ Mobile Weather Unit
- Ⓢ Repeater
- Ⓢ Water Source
- Repair Status Point
- Repair Needed
- No Repair Needed
- Other - See Comments
- Unknown
- Ⓜ Completed Dozer Line
- Ⓜ Completed Fuel Break
- Ⓜ Completed Hand Line
- Ⓜ Completed Mixed Construction Line
- Ⓜ Planned Dozer Line
- Ⓜ Planned Hand Line
- Ⓜ Planned Road as Line
- Ⓜ Access or Improved Road
- Ⓜ Fence
- Ⓜ Other
- Ⓜ Repair Line
- Ⓜ Retardant Drop
- Ⓜ Fire Edge
- Ⓜ Contained Line
- Repair Status Line
- Completed - Inspected
- Repair Needed
- No Repair Needed
- Unknown
- Ⓜ Wildfire Daily Fire Perimeter
- Ⓜ Aerial Fire Retardant Avoidance



**Read Contacts:**  
**Katie Bongofsky (Lead) - 406-925-3914**  
**Lenora Dombro - 406-640-2850**



7/6/2021 0535  
North American 1983 Datum, Lat/Long Grid

