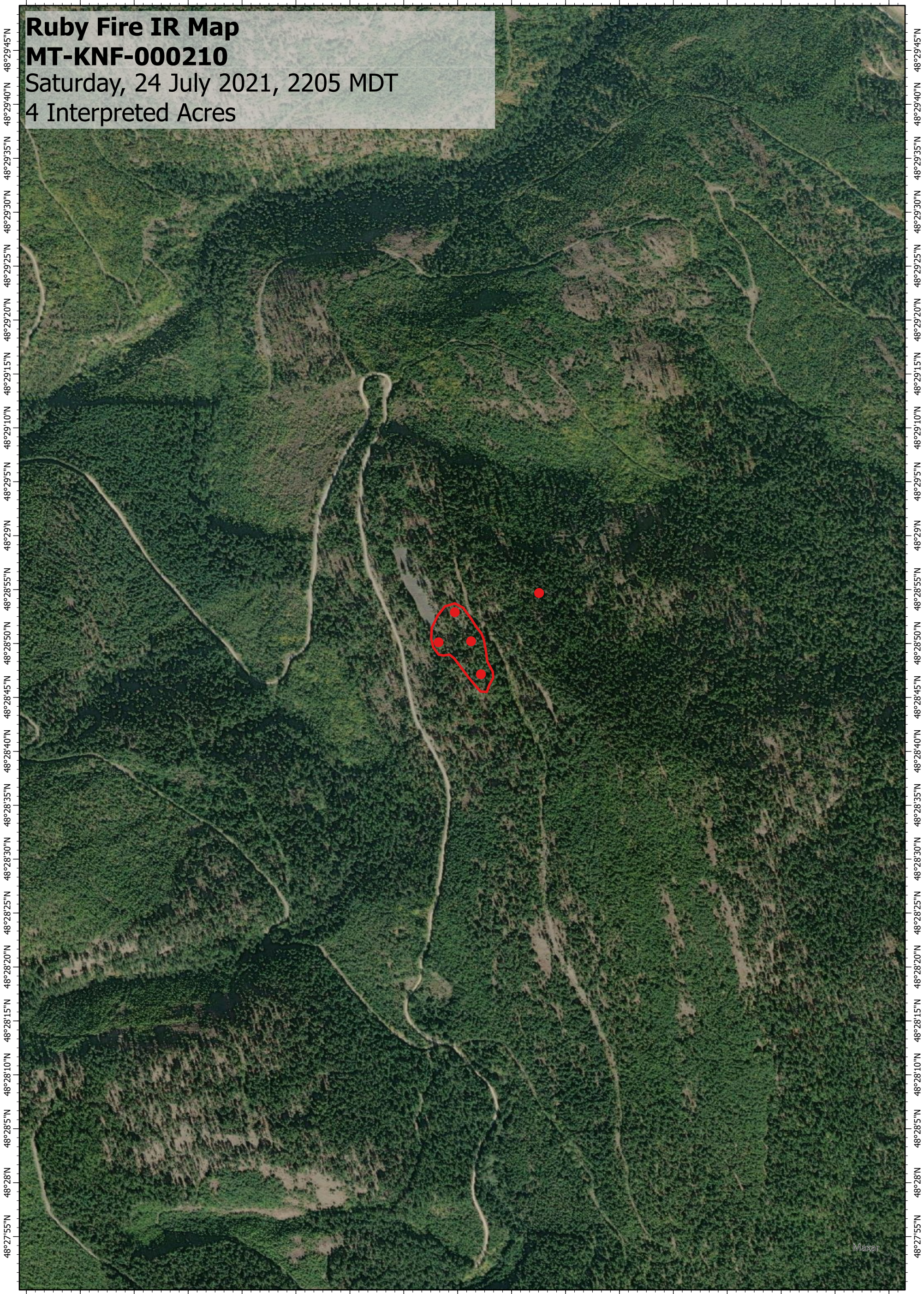


115°57'5"W 115°57'W 115°56'55"W 115°56'50"W 115°56'45"W 115°56'40"W 115°56'35"W 115°56'30"W 115°56'25"W 115°56'20"W 115°56'15"W 115°56'10"W 115°56'5"W 115°56'W 115°55'55"W 115°55'50"W 115°55'45"W



Ruby Fire IR Map

MT-KNF-000210

Saturday, 24 July 2021, 2205 MDT

4 Interpreted Acres

115°57'5"W 115°57'W 115°56'55"W 115°56'50"W 115°56'45"W 115°56'40"W 115°56'35"W 115°56'30"W 115°56'25"W 115°56'20"W 115°56'15"W 115°56'10"W 115°56'5"W 115°56'W 115°55'55"W 115°55'50"W 115°55'45"W

Legend

- Isolated Heat
- Burn Perimeter

Scale: 1:10,000
 Projection: WGS 1984
 Produced by: Owyhee Air Research, LLC
 IR Interpreter: C. Holley
 Contact: fire@owyheeair.com (208) 442-5405

