

115°50'0"W

115°49'30"W

115°49'0"W

115°48'30"W

115°48'0"W

115°47'30"W

115°47'0"W

45°33'30"N

45°33'0"N

45°32'30"N

45°32'0"N

45°31'30"N

45°31'0"N

45°30'30"N

45°33'30"N

45°33'0"N

45°32'30"N

45°32'0"N

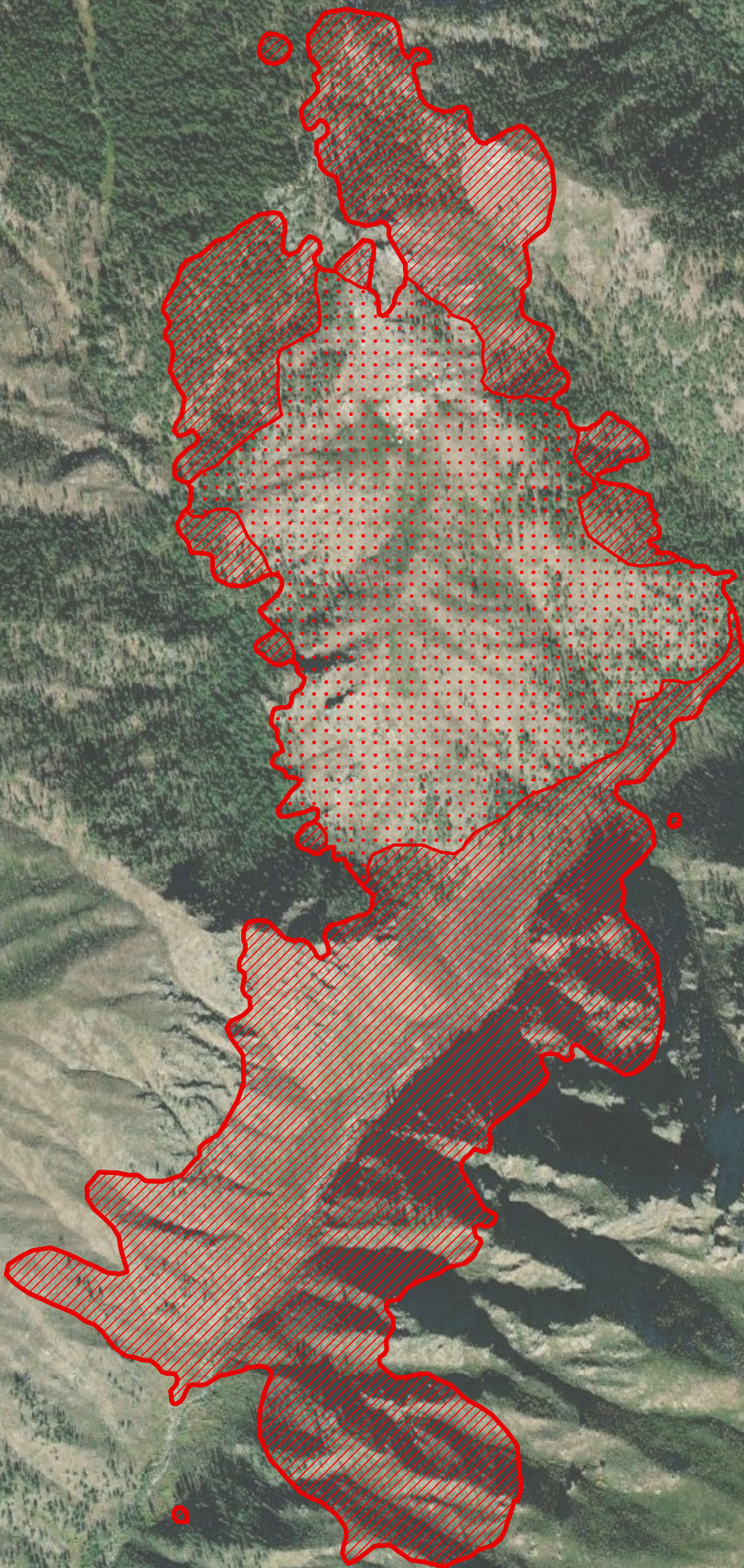
45°31'30"N




45°31'0"N

45°30'30"N

Sheep Creek
ID-NCF-000960
8/30/2021

Infrared Interpretation
 Date of Imagery: 08/30/2021 0034 MDT
 660 Acres





-  IR Heat Perimeter
-  IR Intense Heat
-  IR Scattered Heat

UTM Zone 12 WGS84

0 0.1 0.2
Miles

08/30/2021 0400 PDT

Elsa Hucks, IRIN

115°49'30"W

115°49'0"W

115°48'30"W

115°48'0"W

115°47'30"W

115°47'0"W