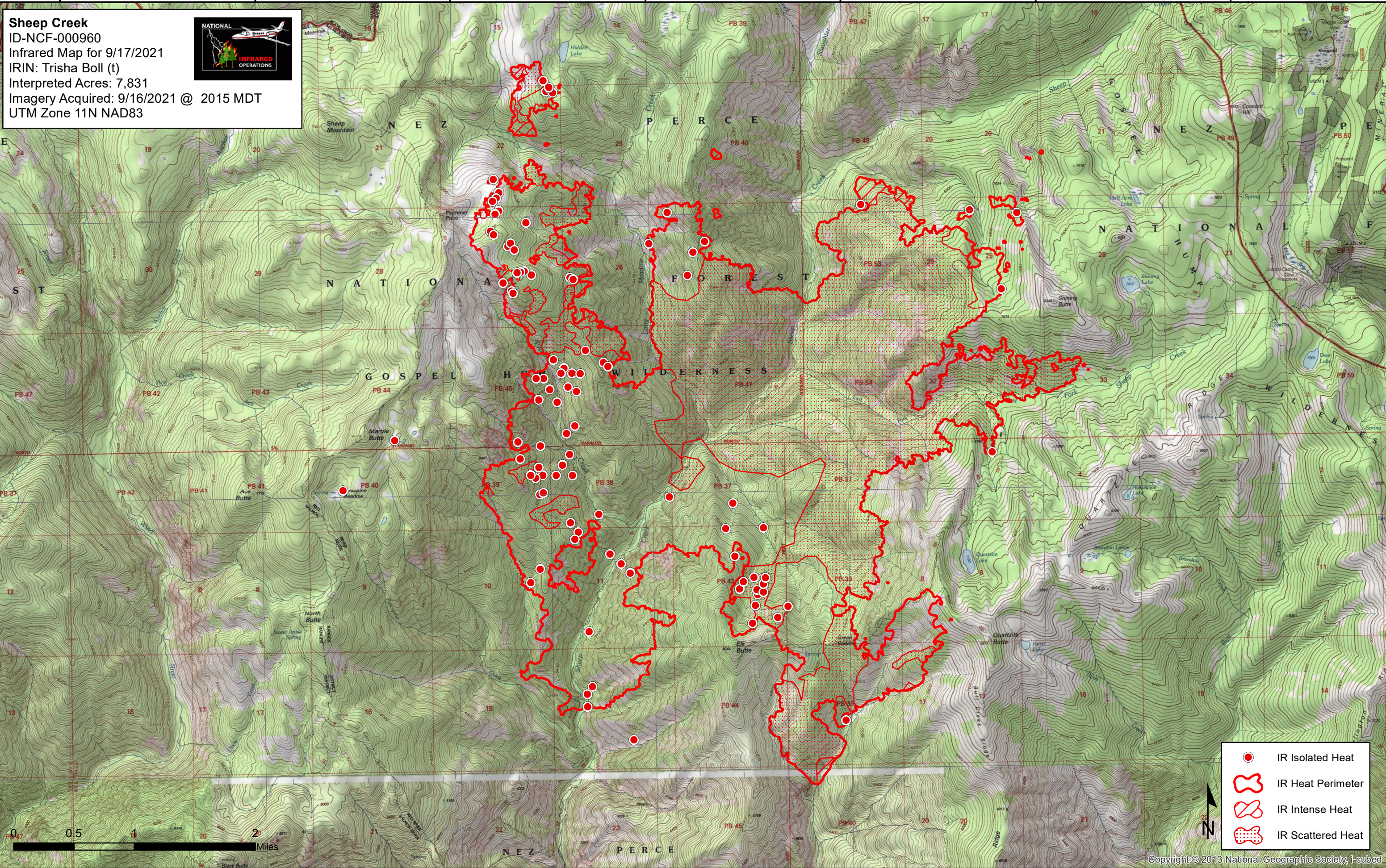


115°54'0"W 115°52'0"W 115°50'0"W 115°48'0"W 115°46'0"W 115°44'0"W 115°42'0"W

Sheep Creek
ID-NCF-000960
Infrared Map for 9/17/2021
IRIN: Trisha Boll (t)
Interpreted Acres: 7,831
Imagery Acquired: 9/16/2021 @ 2015 MDT
UTM Zone 11N NAD83



45°34'0"N

45°32'0"N





45°30'0"N

45°34'0"N

45°32'0"N

45°30'0"N

115°54'0"W 115°52'0"W 115°50'0"W 115°48'0"W 115°46'0"W 115°44'0"W 115°42'0"W

-  IR Isolated Heat
-  IR Heat Perimeter
-  IR Intense Heat
-  IR Scattered Heat



Copyright © 2013 National Geographic Society, i-cubed

