

115°50'0"W 115°49'0"W 115°48'0"W 115°47'0"W 115°46'0"W 115°45'0"W 115°44'0"W

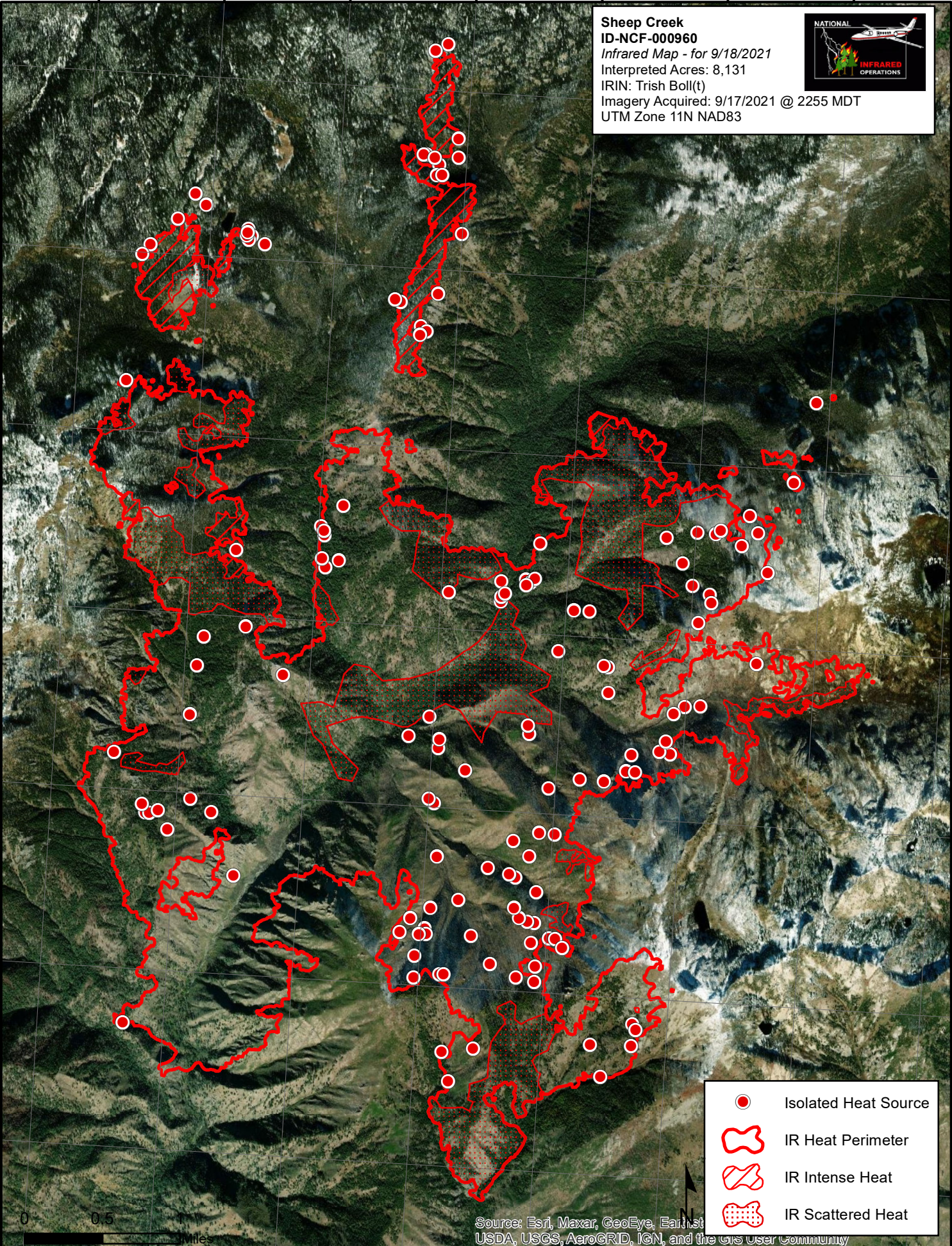
45°36'0"N  
45°35'0"N  
45°34'0"N  
45°33'0"N  
45°32'0"N  
45°31'0"N  
45°30'0"N





**Sheep Creek**  
**ID-NCF-000960**  
Infrared Map - for 9/18/2021  
Interpreted Acres: 8,131  
IRIN: Trish Boll(t)  
Imagery Acquired: 9/17/2021 @ 2255 MDT  
UTM Zone 11N NAD83



45°36'0"N  
45°35'0"N  
45°34'0"N  
45°33'0"N  
45°32'0"N  
45°31'0"N  
45°30'0"N

115°50'0"W 115°49'0"W 115°48'0"W 115°47'0"W 115°46'0"W 115°45'0"W 115°44'0"W 115°43'0"W



-  Isolated Heat Source
-  IR Heat Perimeter
-  IR Intense Heat
-  IR Scattered Heat

Source: Esri, Maxar, GeoEye, Earthstar, USDA, USGS, AeroGRID, IGN, and the GIS User Community

