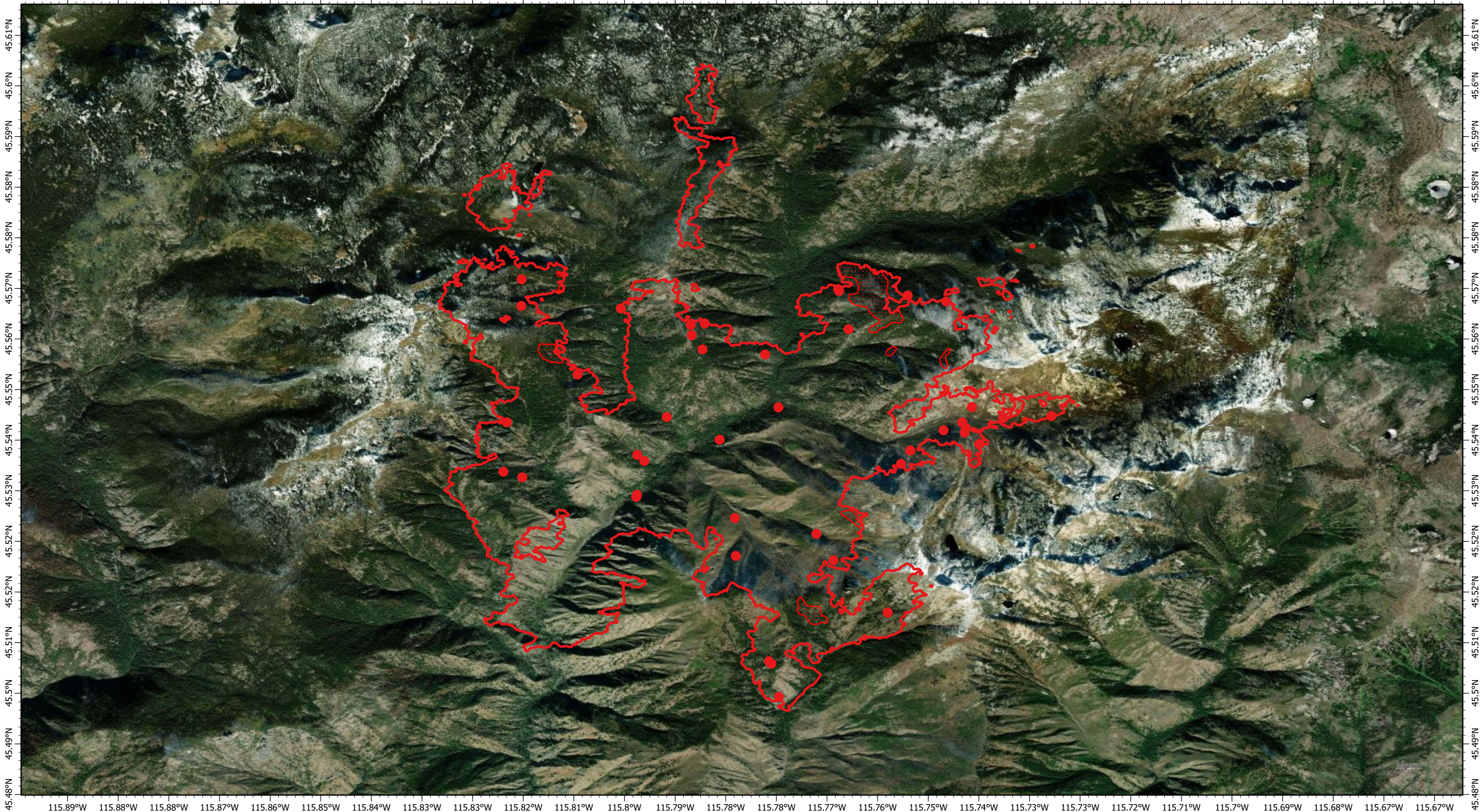


115.89°W 115.88°W 115.88°W 115.87°W 115.86°W 115.85°W 115.84°W 115.83°W 115.83°W 115.82°W 115.81°W 115.8°W 115.79°W 115.78°W 115.78°W 115.77°W 115.76°W 115.75°W 115.74°W 115.73°W 115.73°W 115.72°W 115.71°W 115.7°W 115.69°W 115.68°W 115.67°W 115.67°W



Sheep Creek Fire IR Map
ID-NCF-000960

23 September 2021, 2045 PDT
8,151 Interpreted Acres

Scale: 1:65,000
Projection: WGS 1984
Produced by: Owyhee Air Research, LLC
IR Interpreter: D. Merriman
Contact: fire@owyheear.com (208) 442-5405

Legend

- Isolated Heat
- Burn Perimeter
- Scattered Heat

